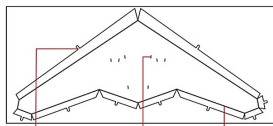


**RQ1 70 Sentinel**  
Item No. MMS026



It is highly recommended that you visit [www.metal-earth.com/360/mms026](http://www.metal-earth.com/360/mms026) to see the completed model before assembling your own



Insertion tabs are inserted and then folded

Insertion holes

Fold lines can be seen as shown here

**Legends:**

- E** Engraved side
- NE** Non-engraved side
- Attention point

Insert tab and bend 90 degrees

Insert tab and twist 90 degrees

**Assembly tip:**

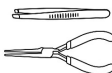
If needed, slightly twist tabs to hold parts together then untwist and bend them down for a nice finish

**Recommended tools:**

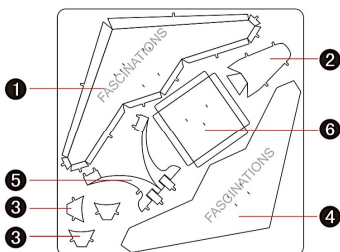
-Wire cutters: helpful for taking parts from the metal sheets.



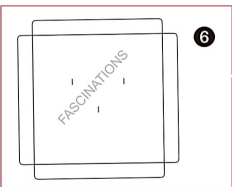
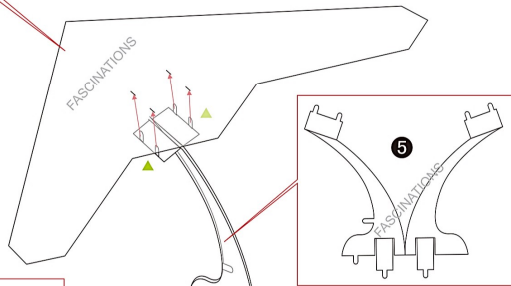
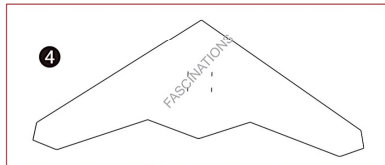
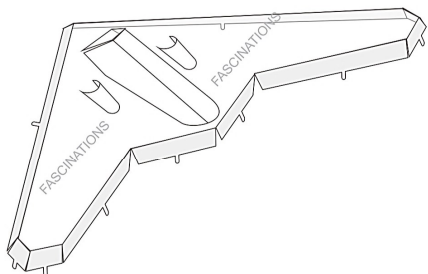
-Tweezers or needle nose pliers: helpful for folding parts, bending and twisting tabs.



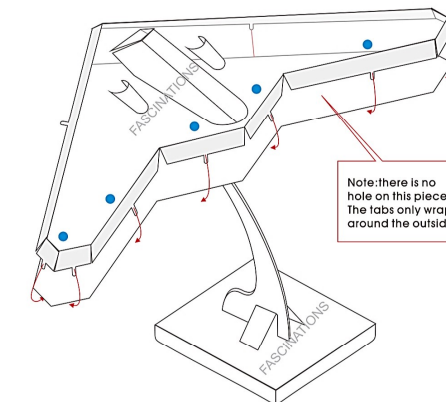
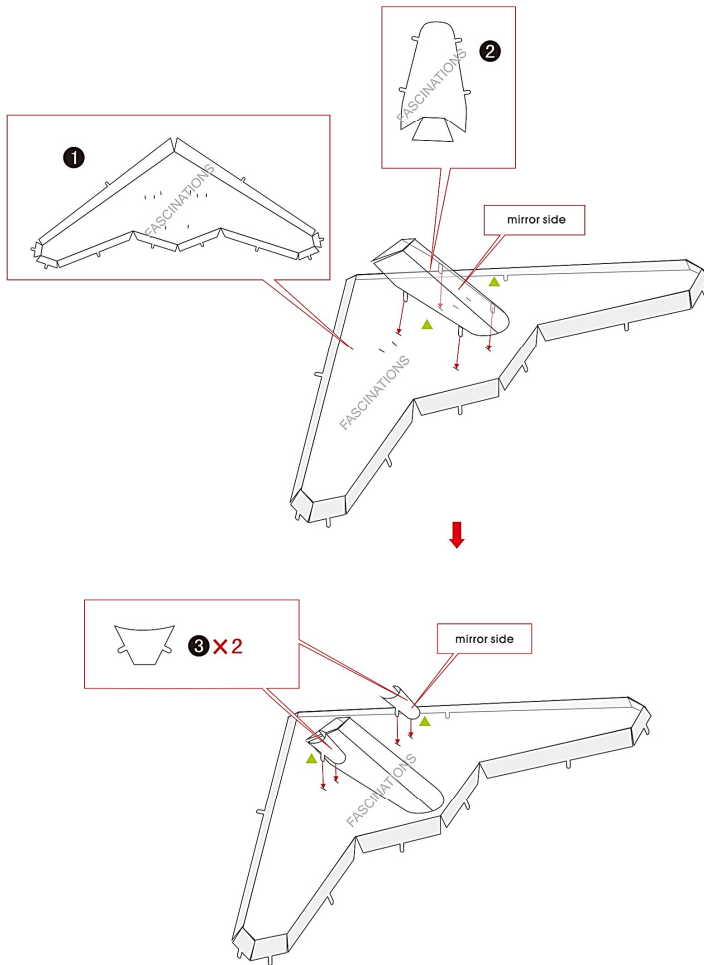
**Metal sheet**



In order to avoid possible injury from sharp edges, please carefully discard the metal sheet after parts have been removed



**Assembly Flow Chart**



Note: there is no hole on this piece. The tabs only wrap around the outside

