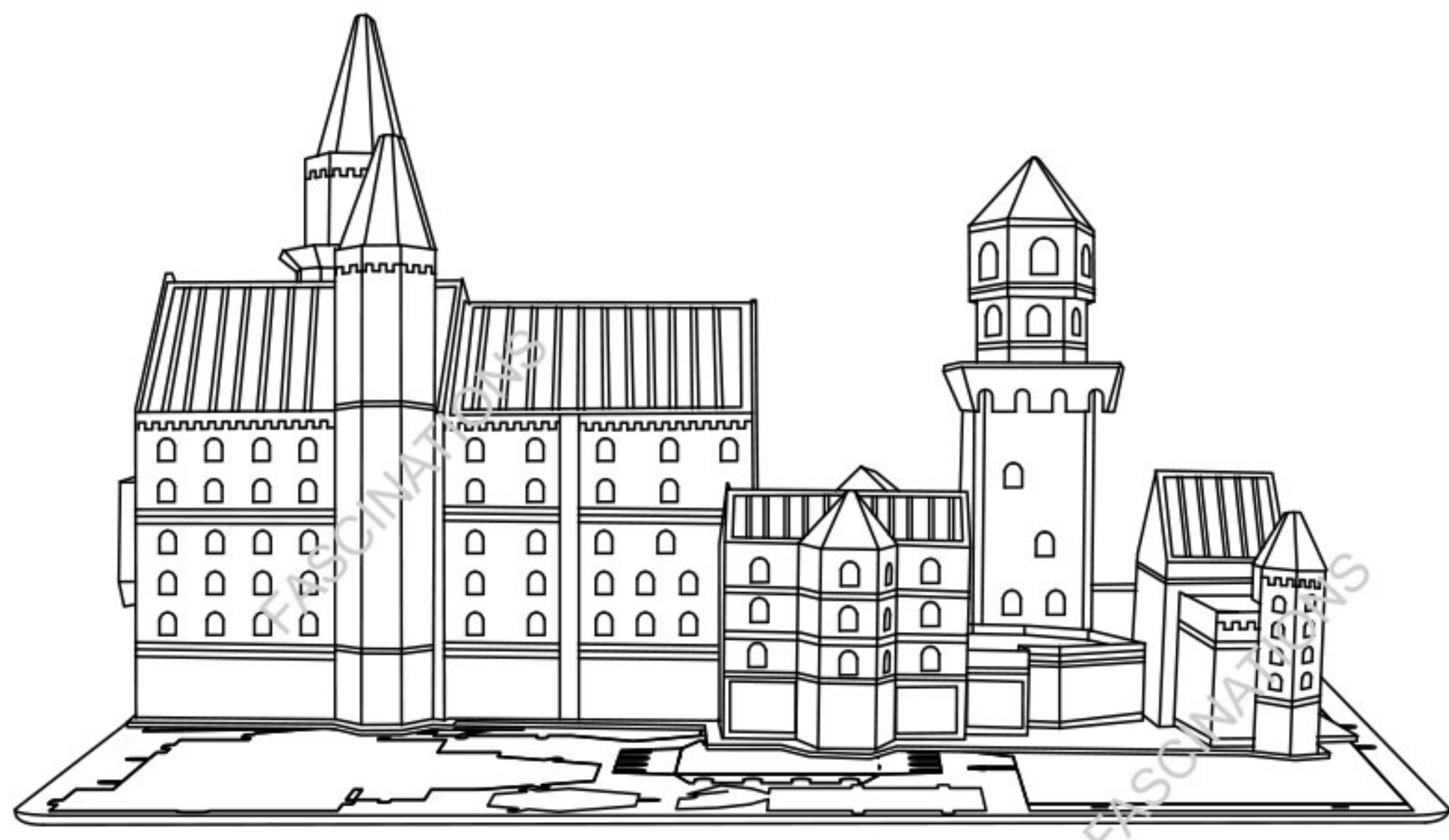


Metal Earth

3D METAL MODEL KITS

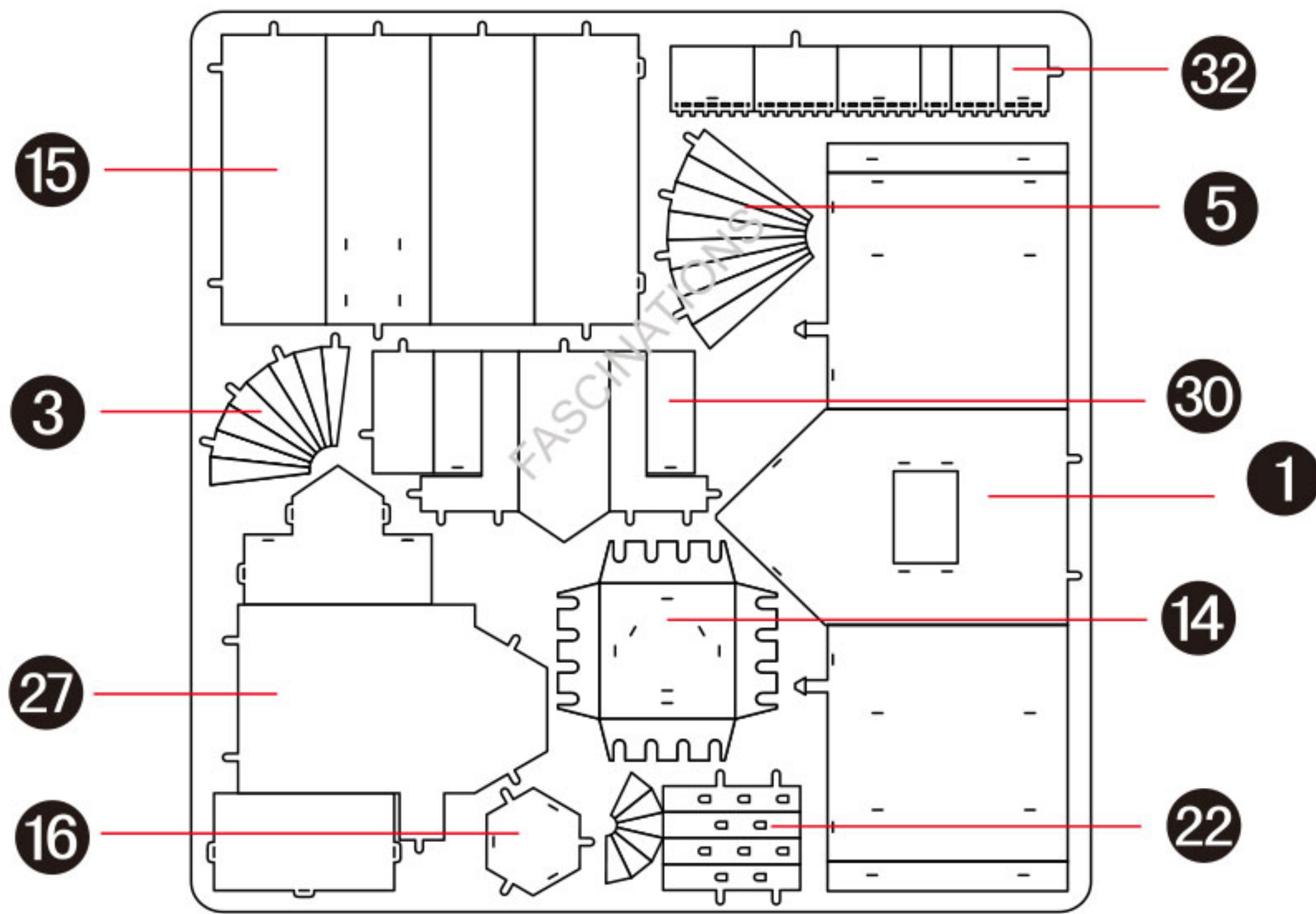


Neuschwanstein Castle
Item No. MMS018

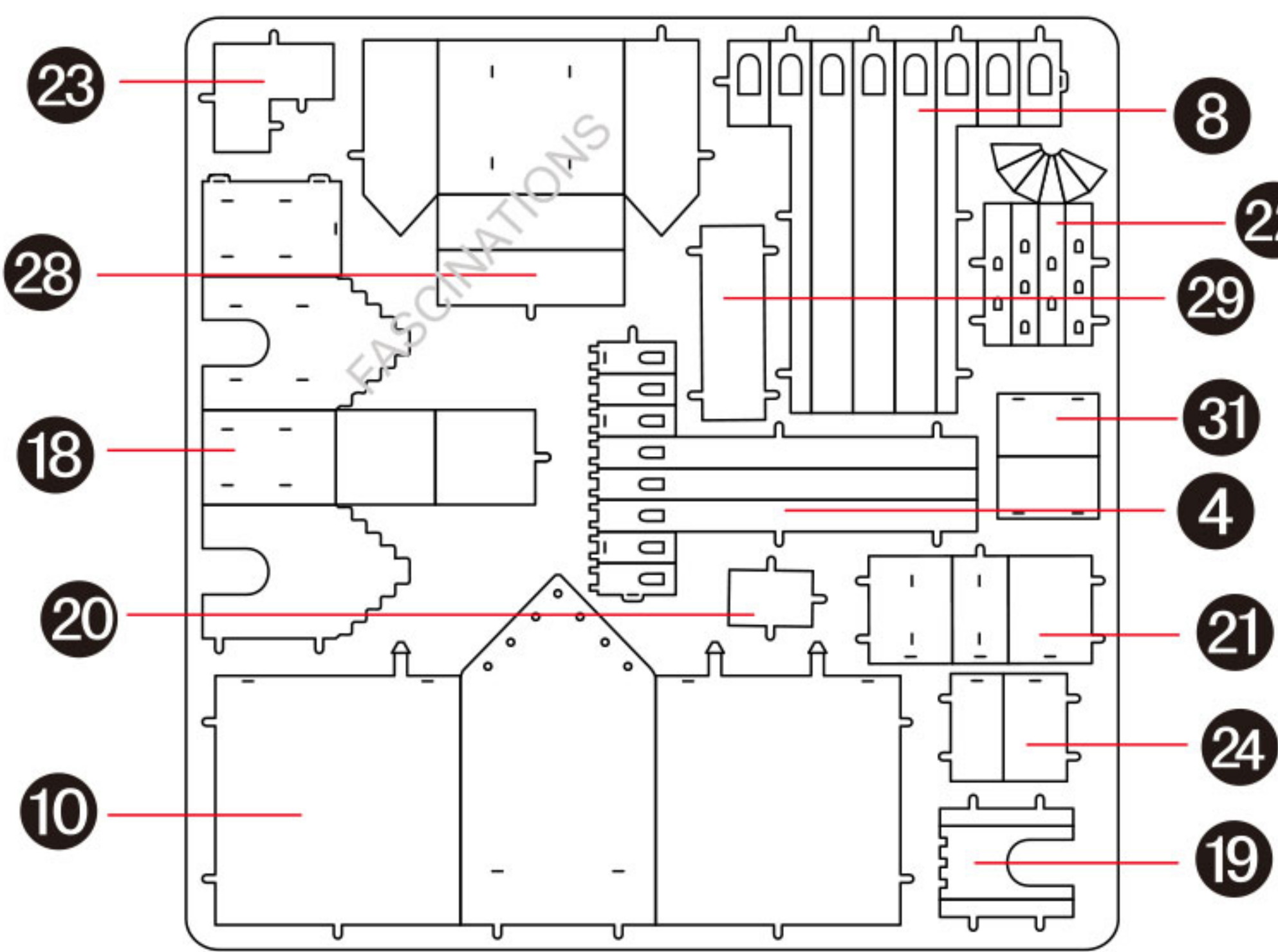


It is highly recommended that you visit www.metal-earth.com/360/mms018 to see the completed model before assembling your own

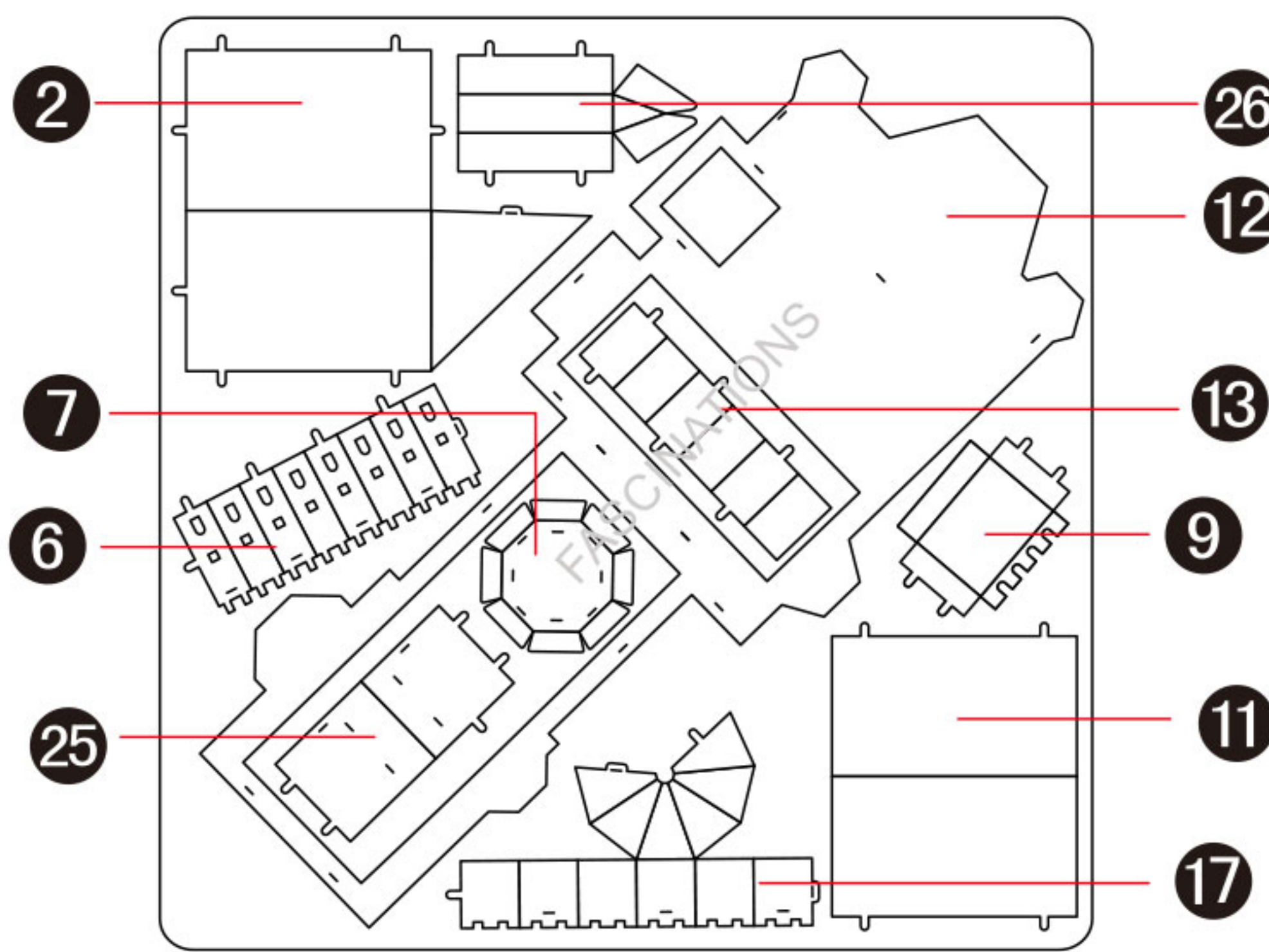
A Metal sheets



B



C



In order to avoid possible injury from sharp edges, please carefully discard the metal sheets after parts have been removed

Legends:

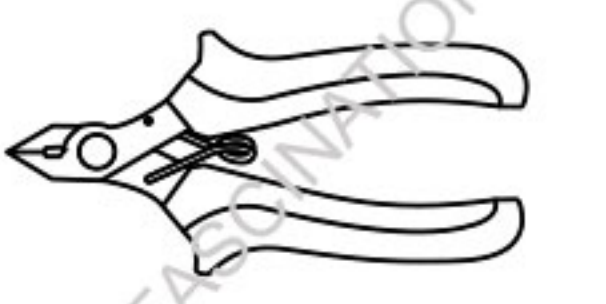
- Engraved side
- Non-engraved side
- Attention point
- Insert tab and bend 90 degrees
- Insert tab and twist 90 degrees

Assembly tip:

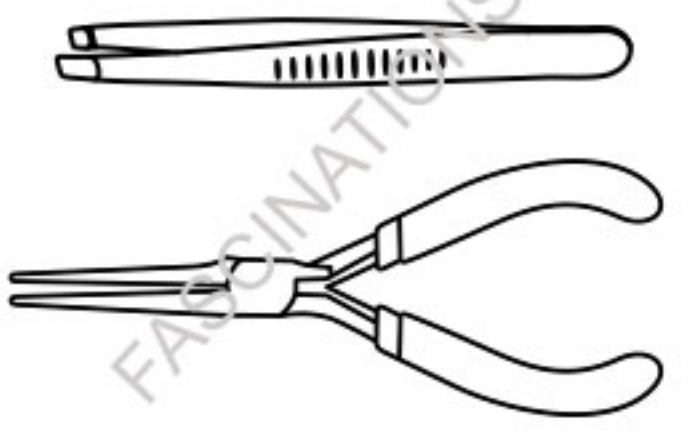
If needed, slightly twist tabs to hold parts together then untwist and bend them down for a nice finish

Recommended tools:

-Wire cutters: helpful for taking parts from the metal sheets.



-Tweezers or needle nose pliers: helpful for folding parts, bending and twisting tabs.



Assembly Flow Chart

