

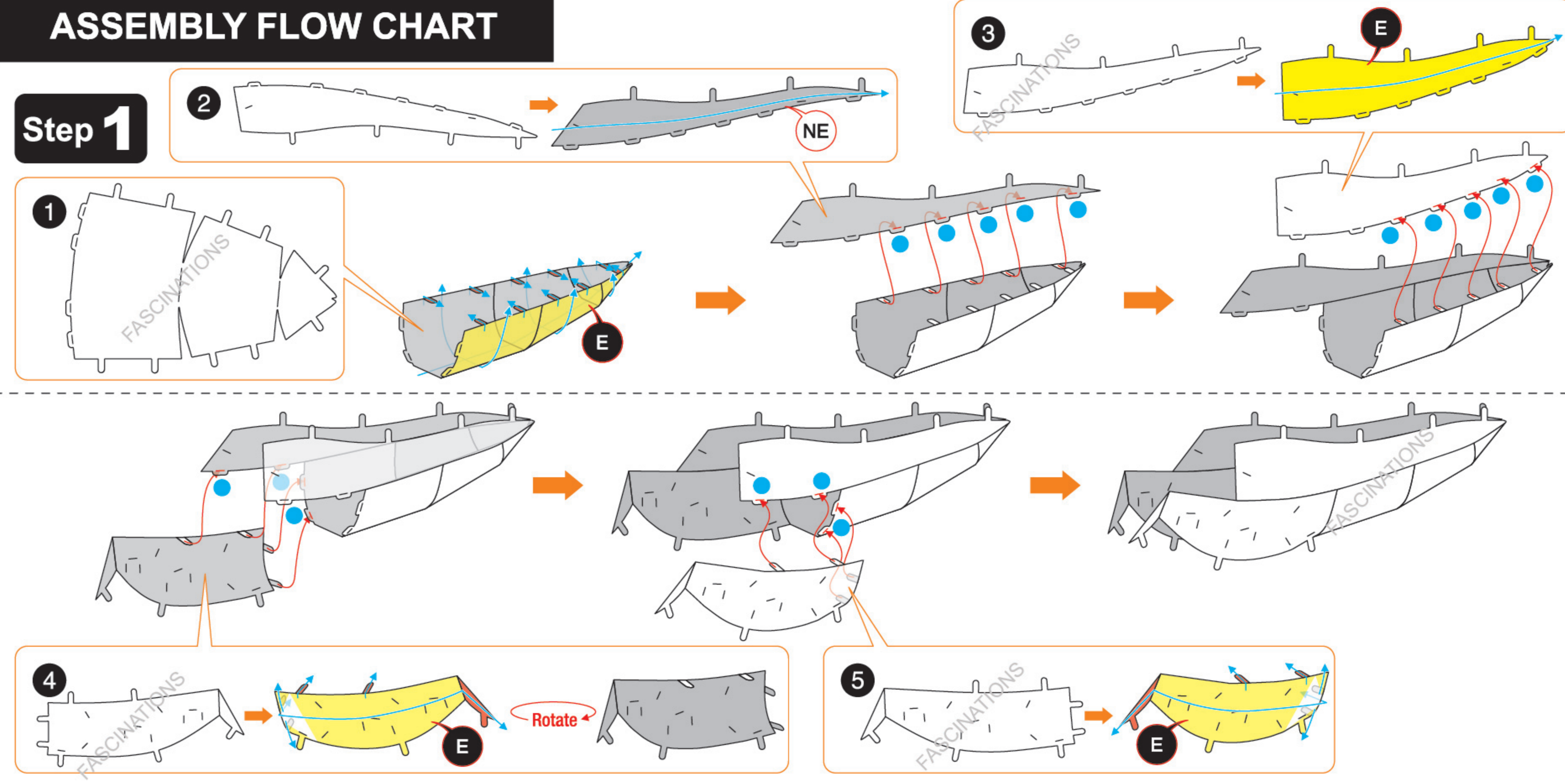
## GRASSHOPPER ME1033

It is highly recommended that you visit [www.metalearth.com/360/ME1033](http://www.metalearth.com/360/ME1033) to see the completed model before assembling your own

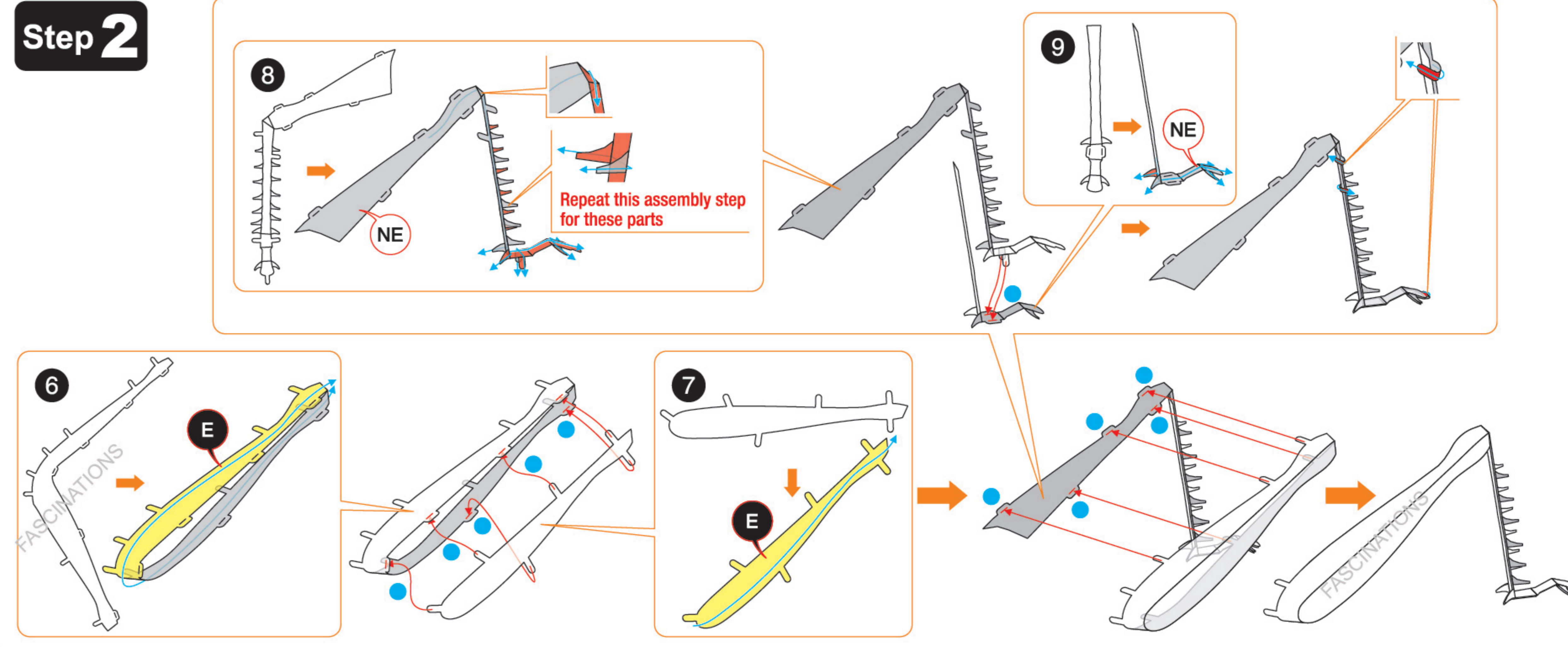


### ASSEMBLY FLOW CHART

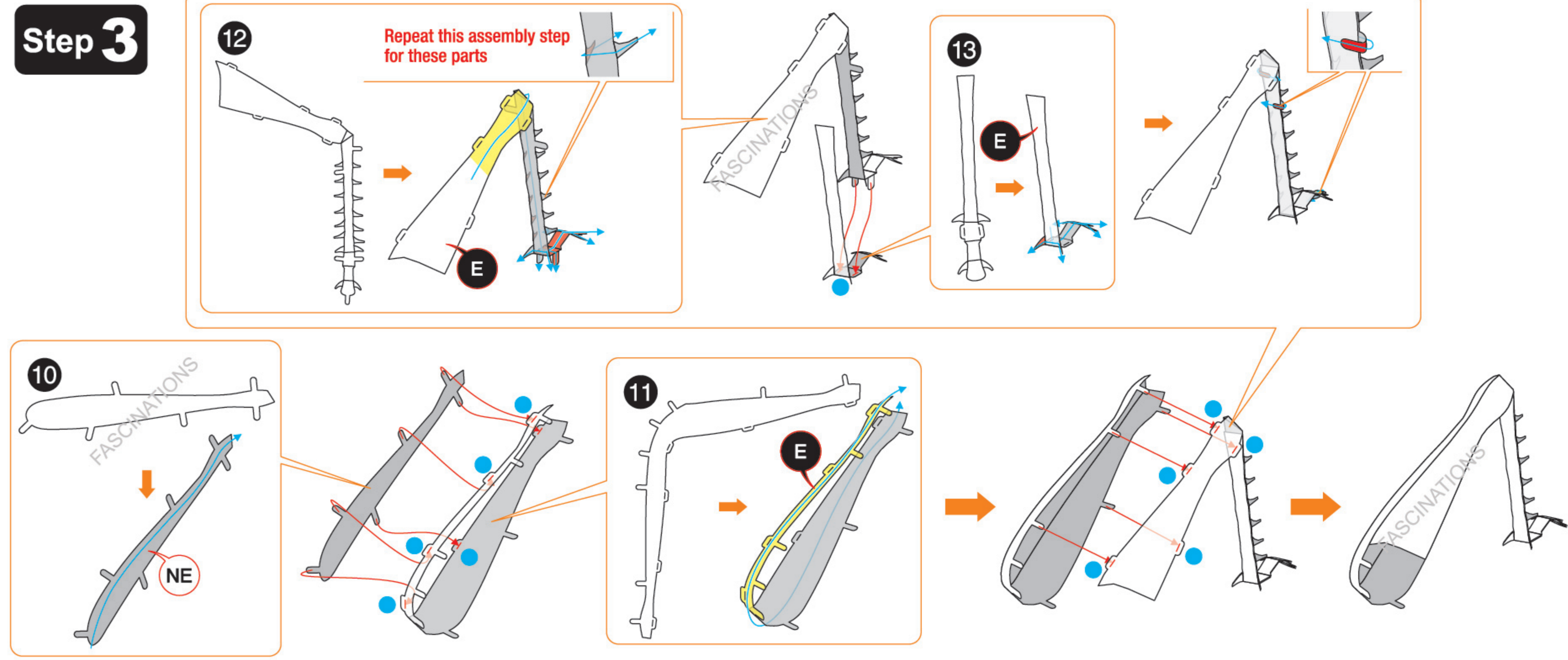
#### Step 1



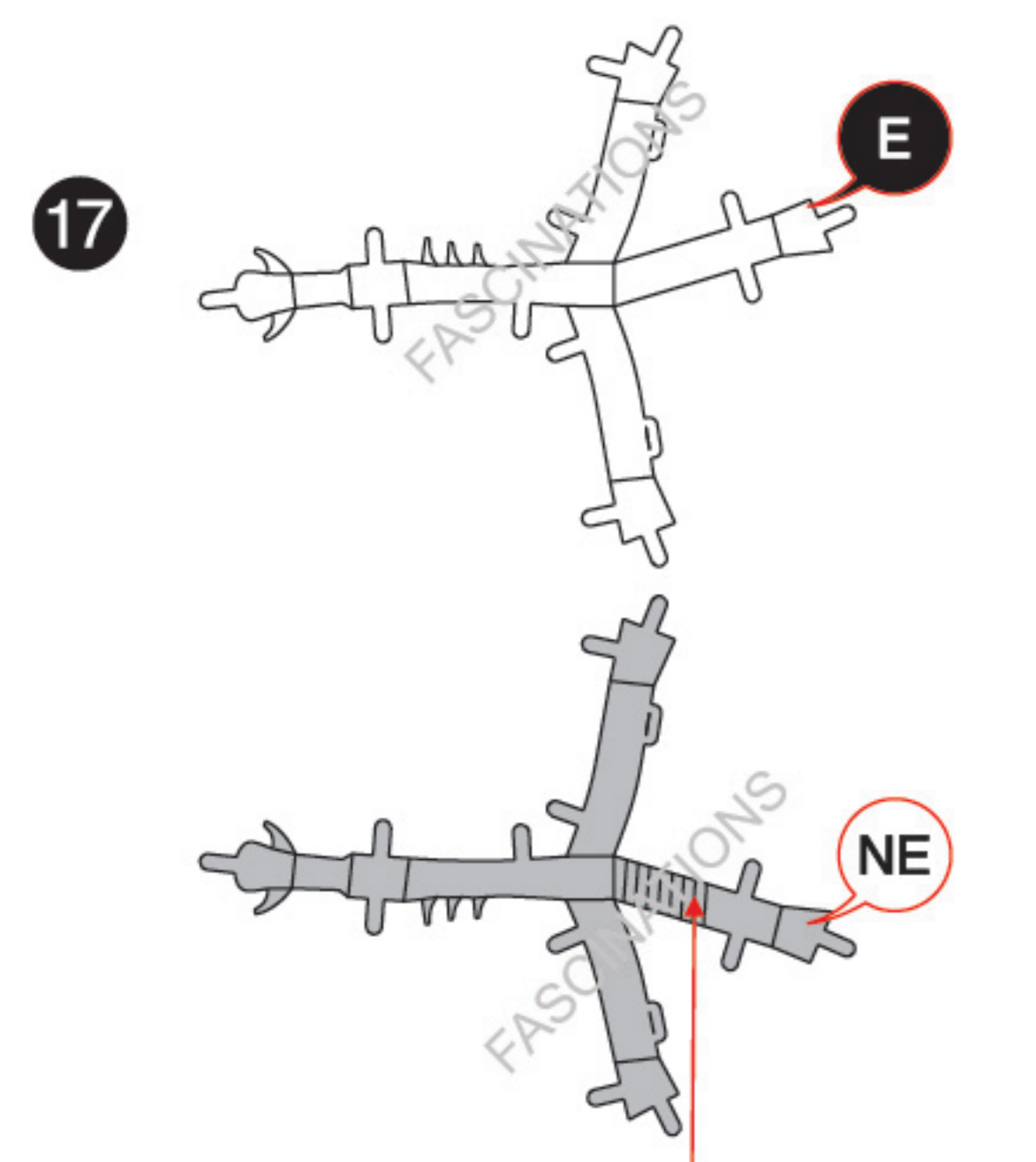
#### Step 2



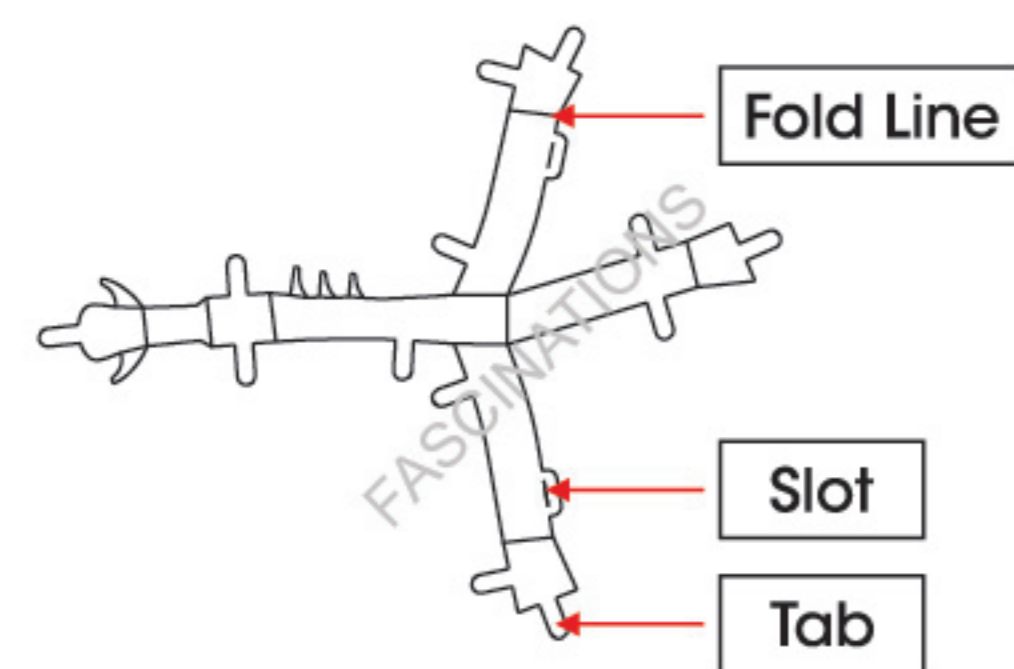
#### Step 3



### TO CREATE THE BEST CONNECTIONS



Consider these engraved stripes as supporting features for the bend



#### Legends:

- E** Engraved side
- NE** Non - engraved side
- Attention point
- Insert tab and bend 90 degrees
- Insert tab and twist 90 degrees

#### Assembly tip:

If needed, slightly twist tabs to hold parts together then untwist and bend them down for a nice finish.

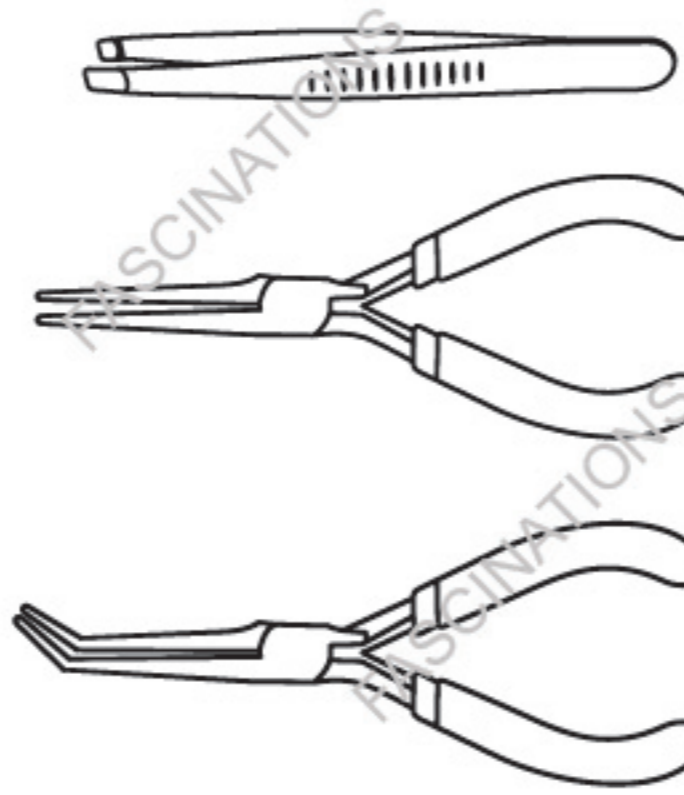
- Yellow areas should be curled
- Red areas should be folded

#### Recommended tools:

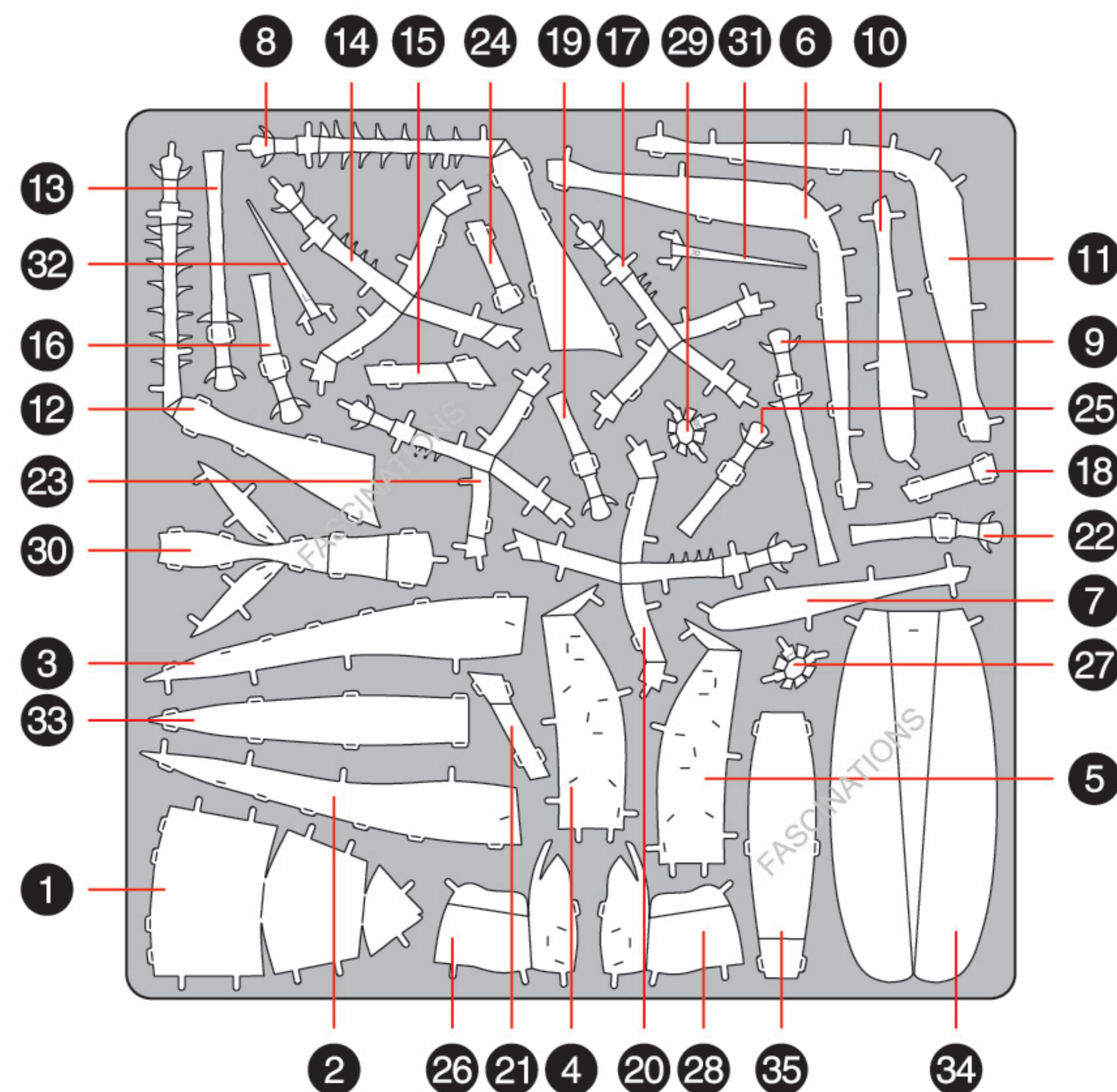
- Wire cutters: helpful for taking parts from the metal sheets.



- Tweezers or needle nose pliers: helpful for folding parts, bending and twisting tabs.



### METAL SHEETS



In order to avoid possible injury from sharp edges, please carefully discard the metal sheets after parts have been removed.

**Step 4**

14

E

15

NE

Connect the tabs illustrated in red first

16

NE

Detailed description: This block contains the first two rows of assembly instructions for Step 4. The top row shows parts 14 and 15 being joined. Part 14 is a long, thin piece with a cross-section. Part 15 is a shorter piece with a notch. They are joined at a point marked 'E'. The bottom row shows parts 16 and 17 being joined. Part 16 is a small piece with a notch, and part 17 is a longer piece with a notch. They are joined at a point marked 'NE'. Red lines indicate the tabs to be connected first.

**Step 5**

17

E

18

NE

19

NE

Detailed description: This block contains the third row of assembly instructions for Step 5. The top row shows parts 17 and 18 being joined. Part 17 is a long, thin piece with a cross-section, and part 18 is a shorter piece with a notch. They are joined at a point marked 'E'. The bottom row shows parts 19 and 20 being joined. Part 19 is a small piece with a notch, and part 20 is a longer piece with a notch. They are joined at a point marked 'NE'. Red lines indicate the tabs to be connected first.

**Step 6**

Step 1

Step 2

Step 4

Connect the tabs illustrated in red first

Step 5

Detailed description: This block contains the fourth row of assembly instructions for Step 6. It shows the assembly of the grasshopper's body. Part 1 is the head, part 2 is the thorax, part 4 is the abdomen, and part 5 is the tail. Red lines indicate the tabs to be connected first.

**Step 7**

20

E

Rotate

21

NE

Connect the tabs illustrated in red first

22

E

Detailed description: This block contains the fifth row of assembly instructions for Step 7. The top row shows parts 20 and 21 being joined. Part 20 is a long, thin piece with a cross-section, and part 21 is a shorter piece with a notch. They are joined at a point marked 'E'. The bottom row shows parts 22 and 23 being joined. Part 22 is a small piece with a notch, and part 23 is a longer piece with a notch. They are joined at a point marked 'E'. Red lines indicate the tabs to be connected first. A 'Rotate' arrow is shown next to part 23.

**Step 8**

23

E

24

NE

25

NE

Detailed description: This block contains the sixth row of assembly instructions for Step 8. The top row shows parts 23 and 24 being joined. Part 23 is a long, thin piece with a cross-section, and part 24 is a shorter piece with a notch. They are joined at a point marked 'E'. The bottom row shows parts 25 and 26 being joined. Part 25 is a small piece with a notch, and part 26 is a longer piece with a notch. They are joined at a point marked 'NE'. Red lines indicate the tabs to be connected first.

**Step 9**

26

E

27

E

Detailed description: This block contains the seventh row of assembly instructions for Step 9. The top row shows parts 26 and 27 being joined. Part 26 is a long, thin piece with a cross-section, and part 27 is a shorter piece with a notch. They are joined at a point marked 'E'. The bottom row shows parts 28 and 29 being joined. Part 28 is a small piece with a notch, and part 29 is a longer piece with a notch. They are joined at a point marked 'E'. Red lines indicate the tabs to be connected first.

**Step 10**

28

E

29

E

Rotate

Detailed description: This block contains the eighth row of assembly instructions for Step 10. The top row shows parts 28 and 29 being joined. Part 28 is a long, thin piece with a cross-section, and part 29 is a shorter piece with a notch. They are joined at a point marked 'E'. The bottom row shows parts 30 and 31 being joined. Part 30 is a small piece with a notch, and part 31 is a longer piece with a notch. They are joined at a point marked 'E'. Red lines indicate the tabs to be connected first. A 'Rotate' arrow is shown next to part 31.

**Step 11**

30

E

31

E

32

E

Connect the tabs illustrated in red first

Step 10

Step 9

Detailed description: This block contains the first two rows of assembly instructions for Step 11. The top row shows parts 30, 31, and 32 being joined. Part 30 is a long, thin piece with a cross-section, part 31 is a shorter piece with a notch, and part 32 is a longer piece with a notch. They are joined at a point marked 'E'. The bottom row shows parts 33 and 34 being joined. Part 33 is a small piece with a notch, and part 34 is a longer piece with a notch. They are joined at a point marked 'E'. Red lines indicate the tabs to be connected first. The diagrams also show the assembly of the grasshopper's head and antennae.

**Step 12**

Step 3

33

E

Step 7

Step 8

Connect the tabs illustrated in red first

Step 6

Detailed description: This block contains the third row of assembly instructions for Step 12. It shows the assembly of the grasshopper's legs. Part 3 is the front leg, part 6 is the middle leg, part 7 is the hind leg, and part 8 is the tail. Red lines indicate the tabs to be connected first.

**Step 11**

34

E

Step 11

Connect the tabs illustrated in red first

Detailed description: This block contains the fourth row of assembly instructions for Step 11. It shows the assembly of the grasshopper's head and antennae. Part 34 is a long, thin piece with a cross-section. It is joined at a point marked 'E'. Red lines indicate the tabs to be connected first.

35

NE

Connect the tabs illustrated in red first

**Fascinations**  
© 2024 Fascinations Seattle, WA  
www.metalearth.com

Detailed description: This block contains the final row of assembly instructions for Step 12. It shows the final assembly of the grasshopper. Part 35 is a long, thin piece with a cross-section. It is joined at a point marked 'NE'. Red lines indicate the tabs to be connected first. The final assembly is shown on the right. The Fascinations logo and copyright information are at the bottom right.