

## F-86 SABRE ME1015

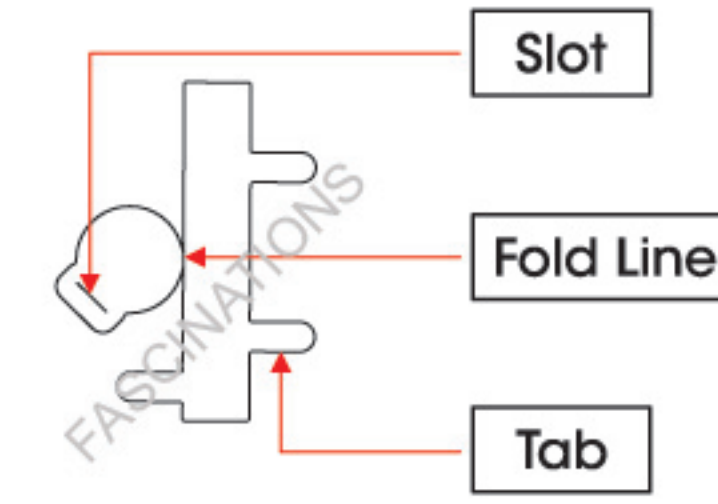
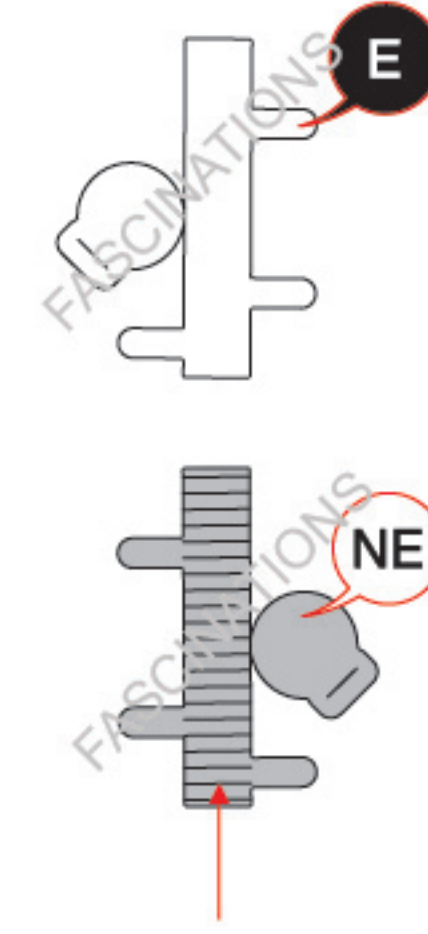


360°  
view

It is highly recommended that you visit  
[www.metalearth.com/360/ME1015](http://www.metalearth.com/360/ME1015)  
to see the completed model before assembling your own

### TO CREATE THE BEST CONNECTIONS

B  
16



Consider these engraved stripes as supporting features for the bend

#### Legends:

- E** Engraved/ Color side
- NE** Non - engraved/ Silver side
- Attention point
- Insert tab and bend 90 degrees
- Insert tab and twist 90 degrees

#### Recommended tools:

- Wire cutters: helpful for taking parts from the metal sheets.
- Tweezers or needle nose pliers: helpful for folding parts, bending and twisting tabs.

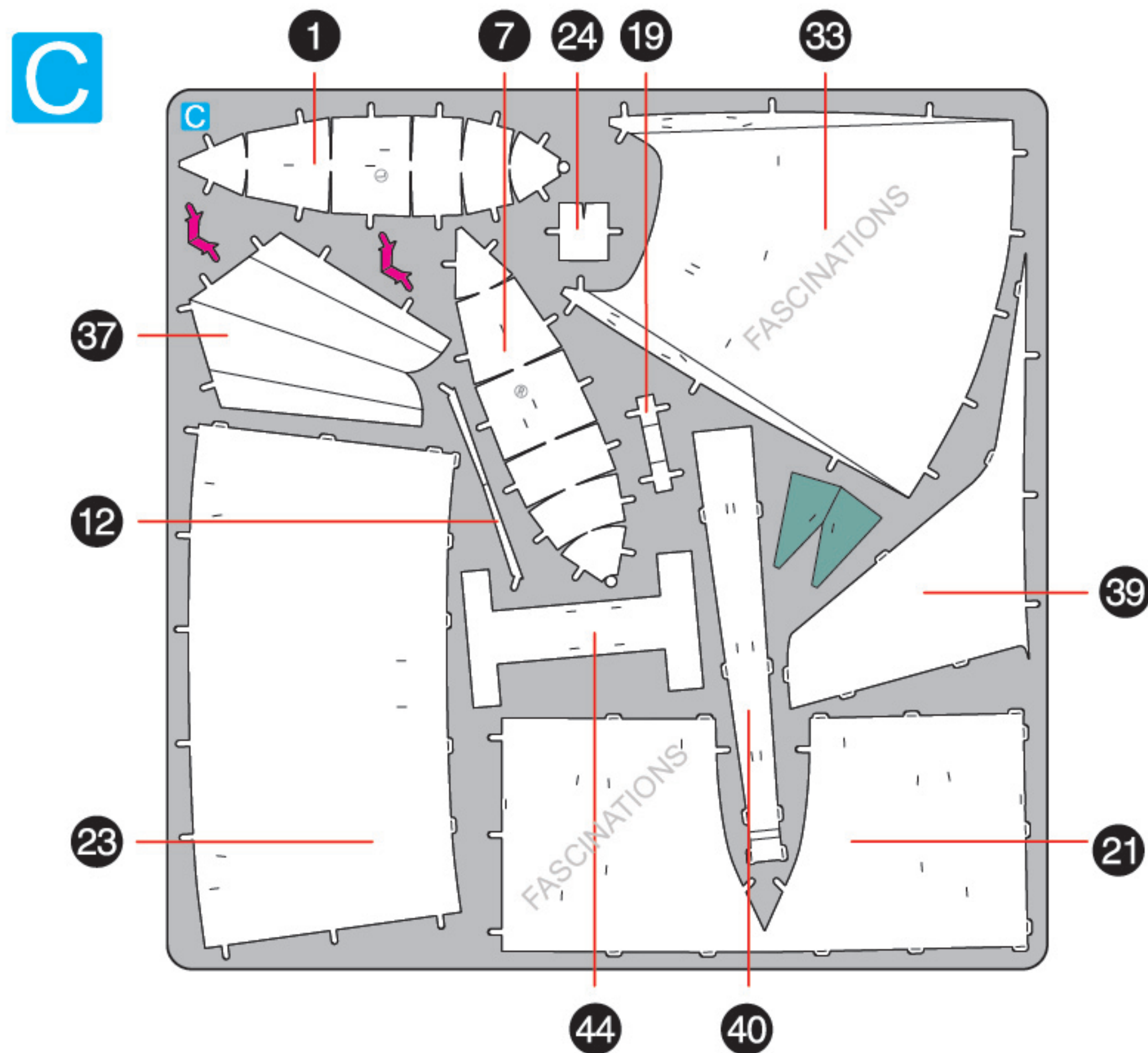
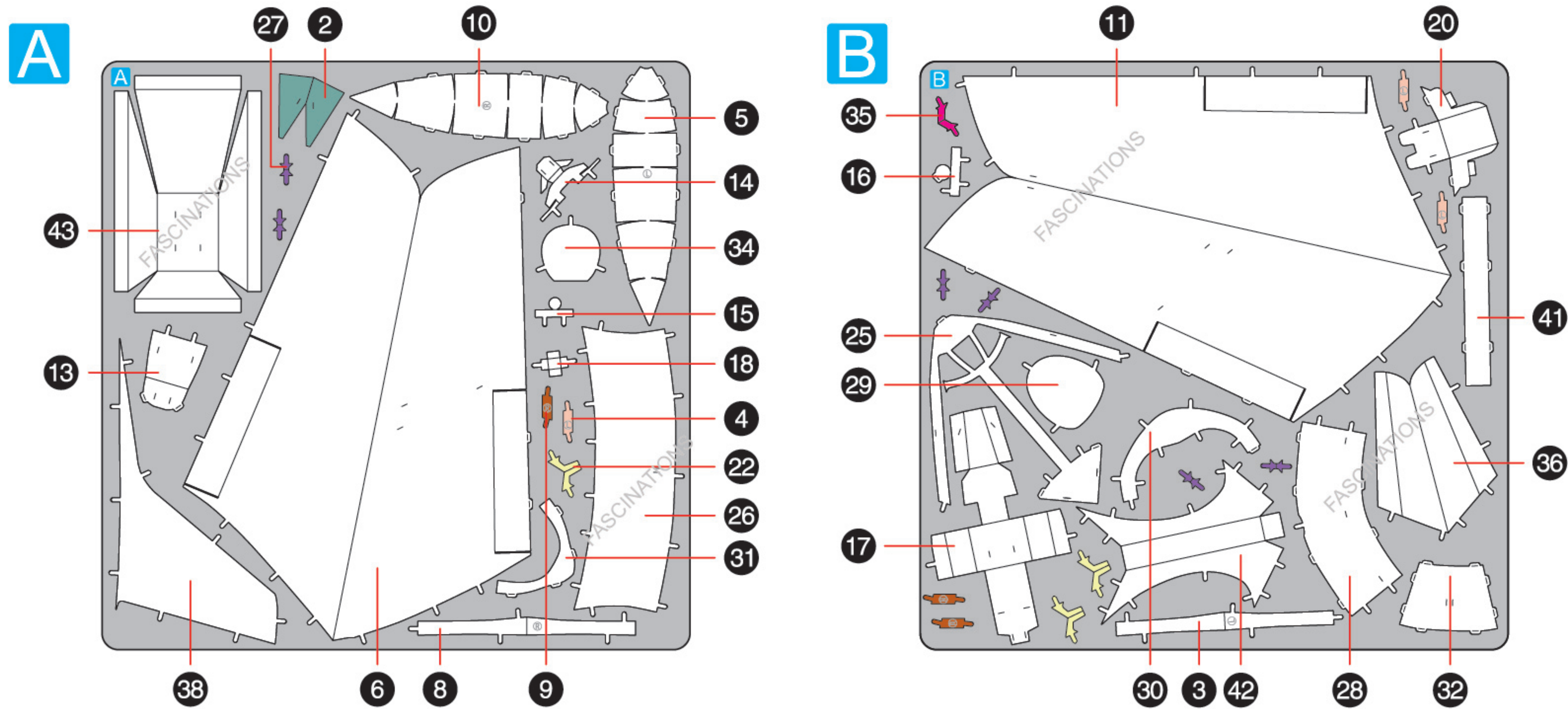
#### Assembly tip:

If needed, slightly twist tabs to hold parts together then untwist and bend them down for a nice finish.

- Yellow areas should be curled
- Red areas should be folded

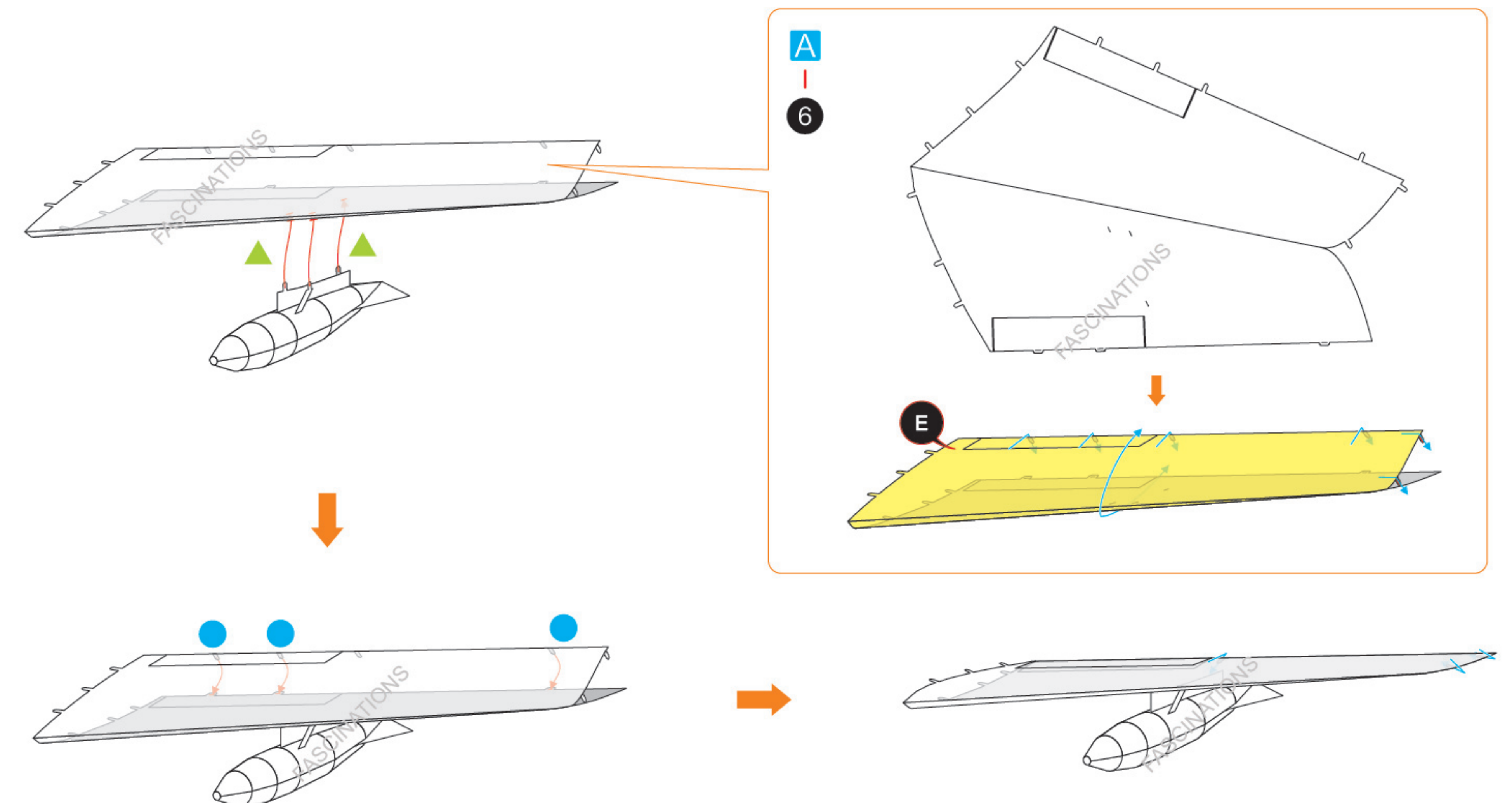
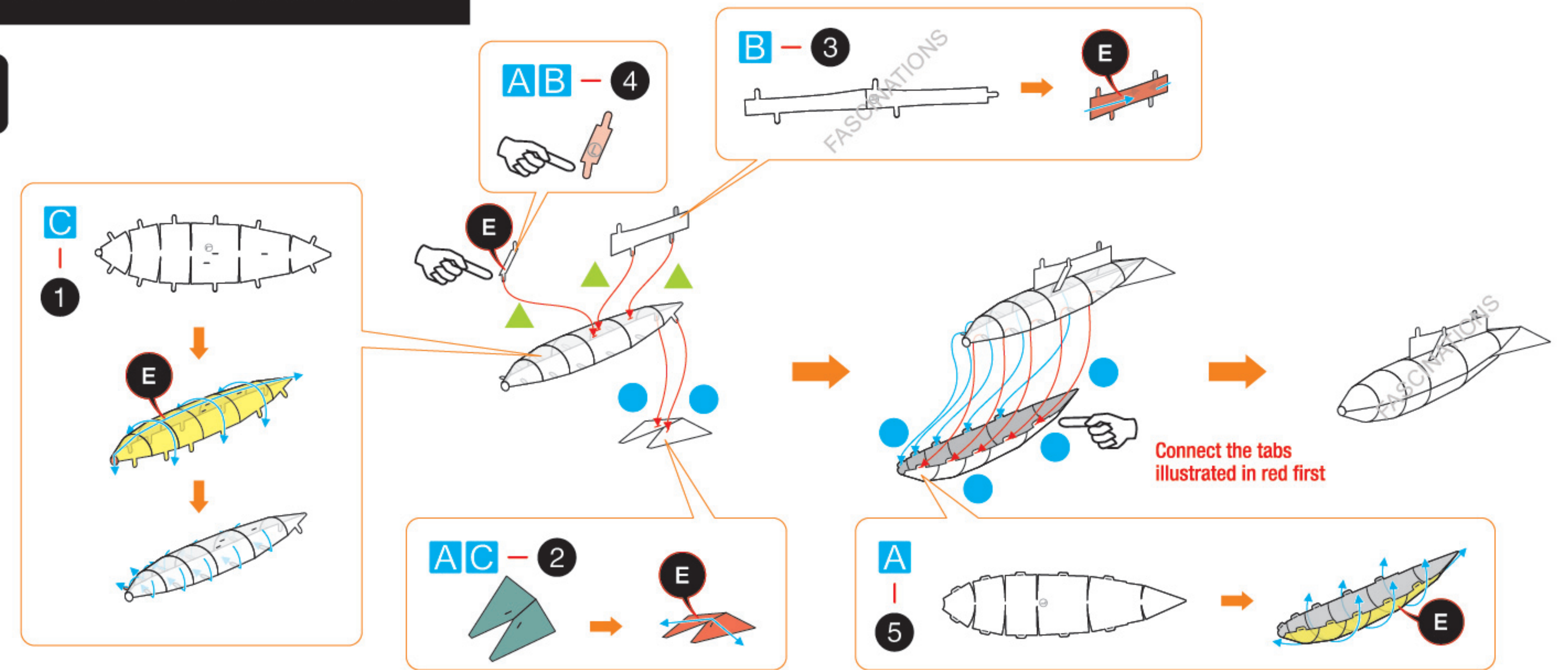
### METAL SHEETS

Parts with same color are duplicates



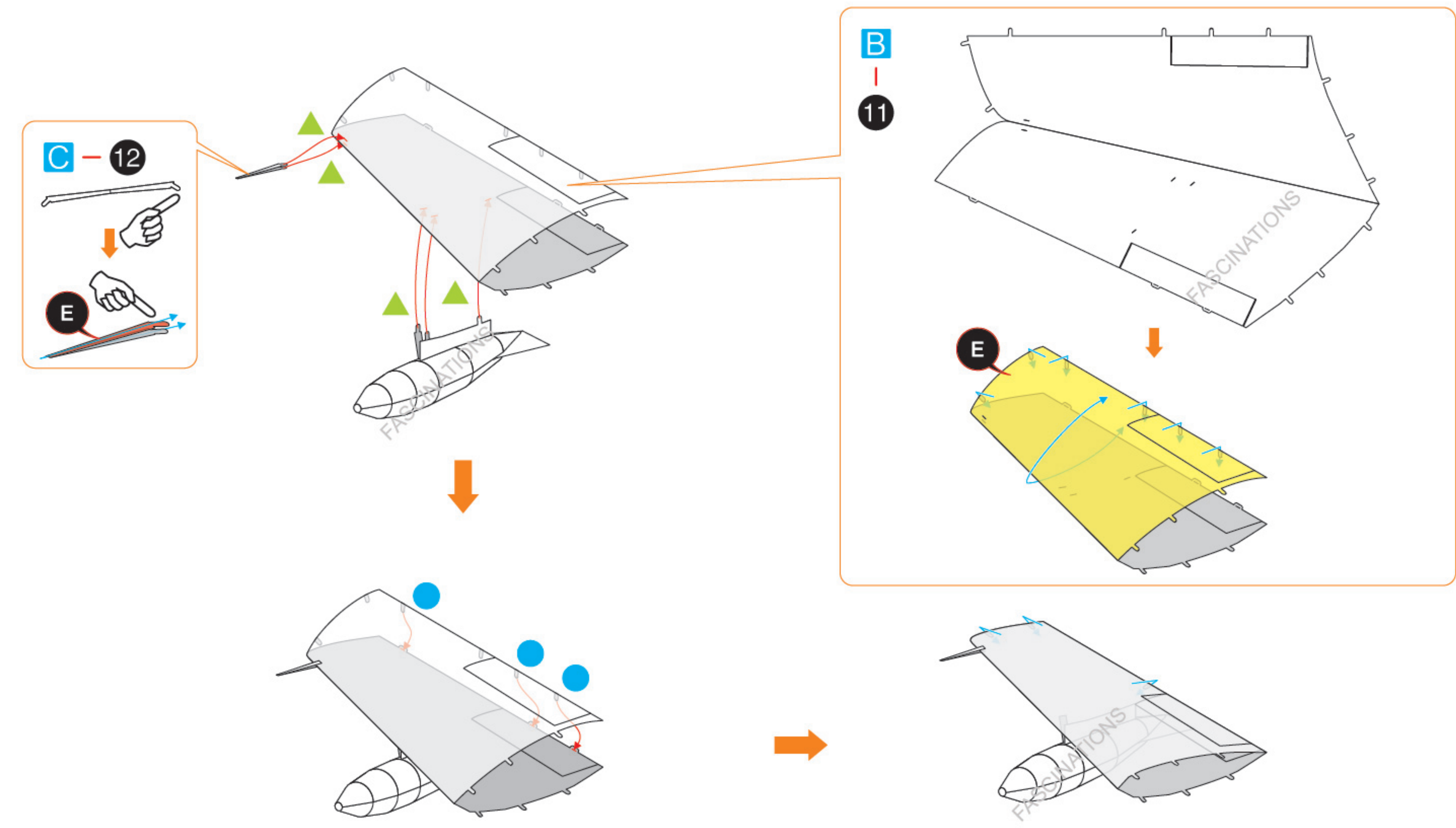
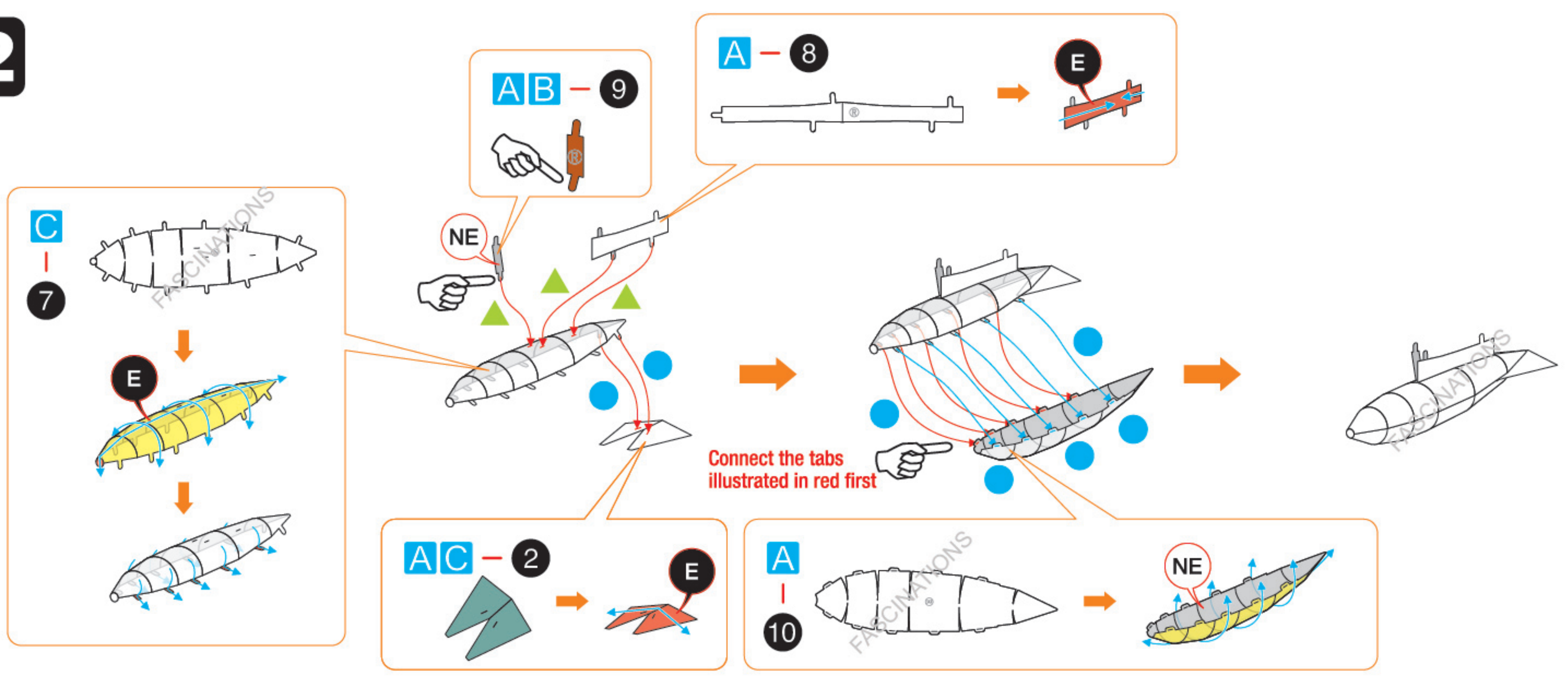
### ASSEMBLY FLOW CHART

#### Step 1

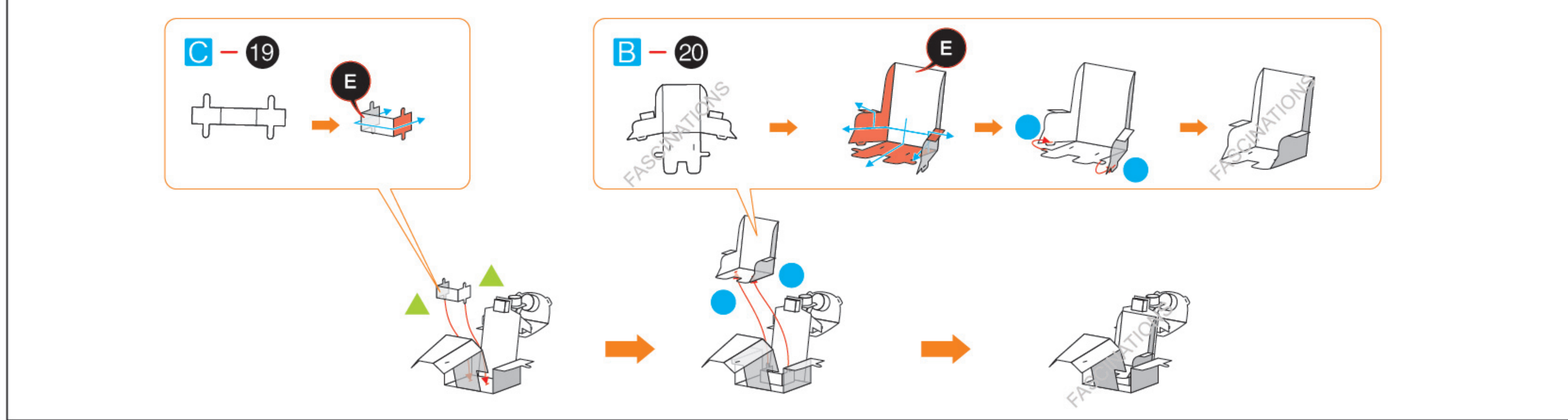
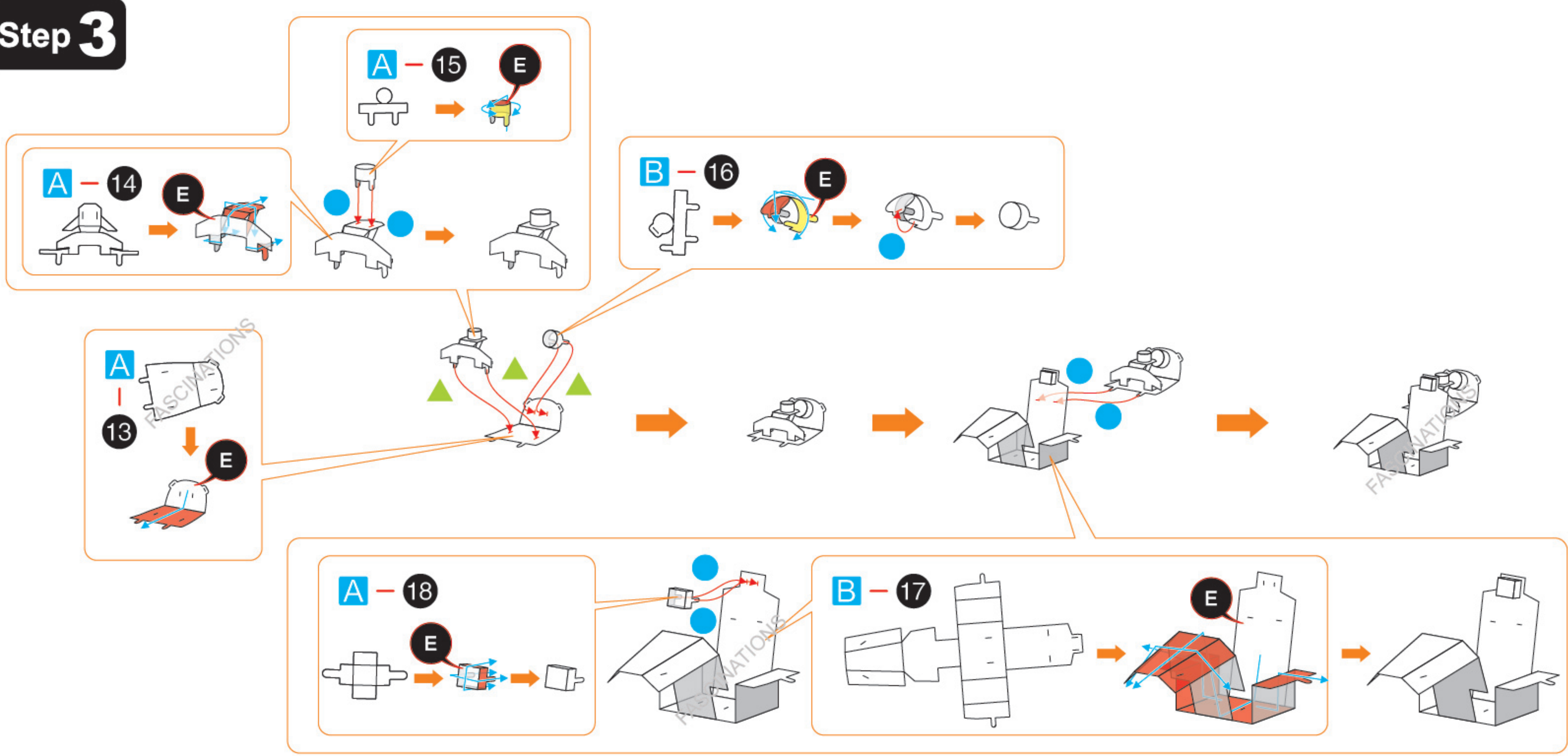


In order to avoid possible injury from sharp edges, please carefully discard the metal sheets after parts have been removed.

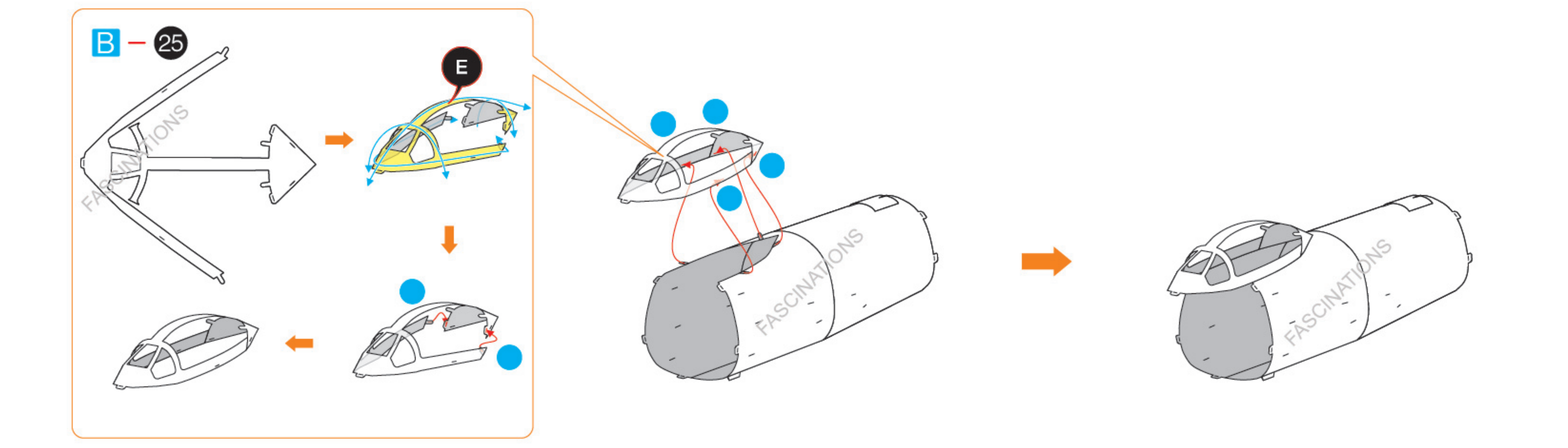
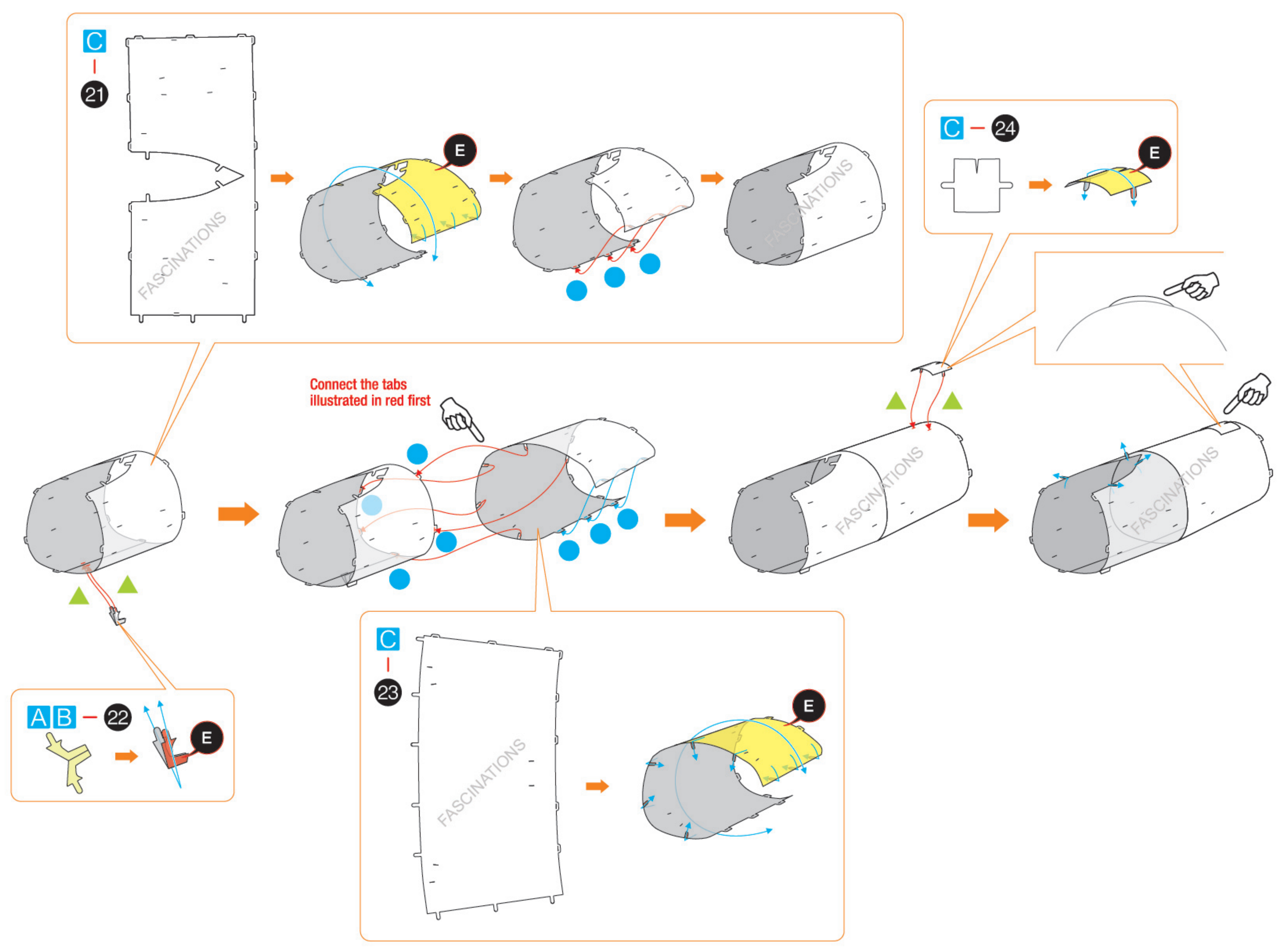
Step 2

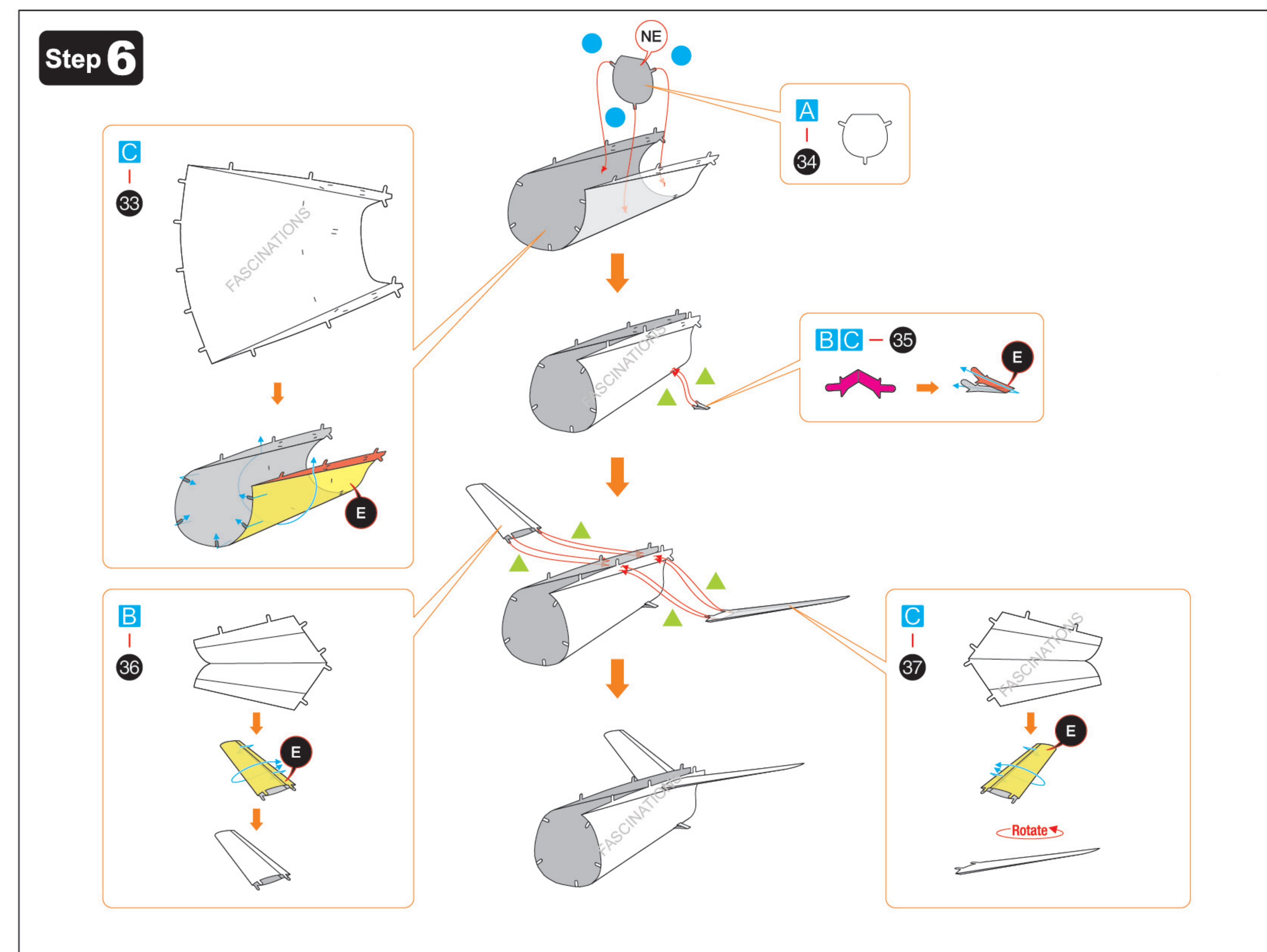
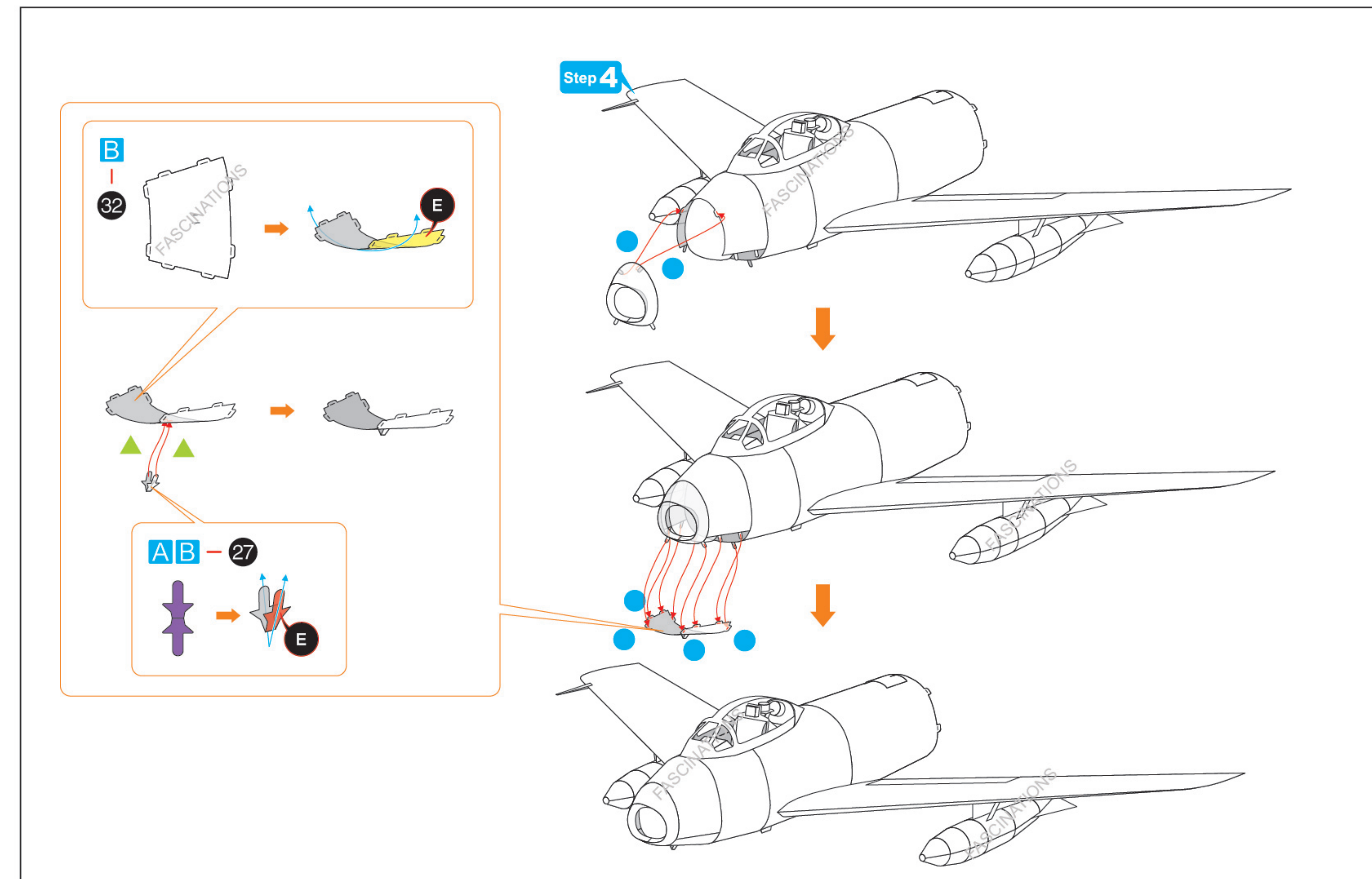
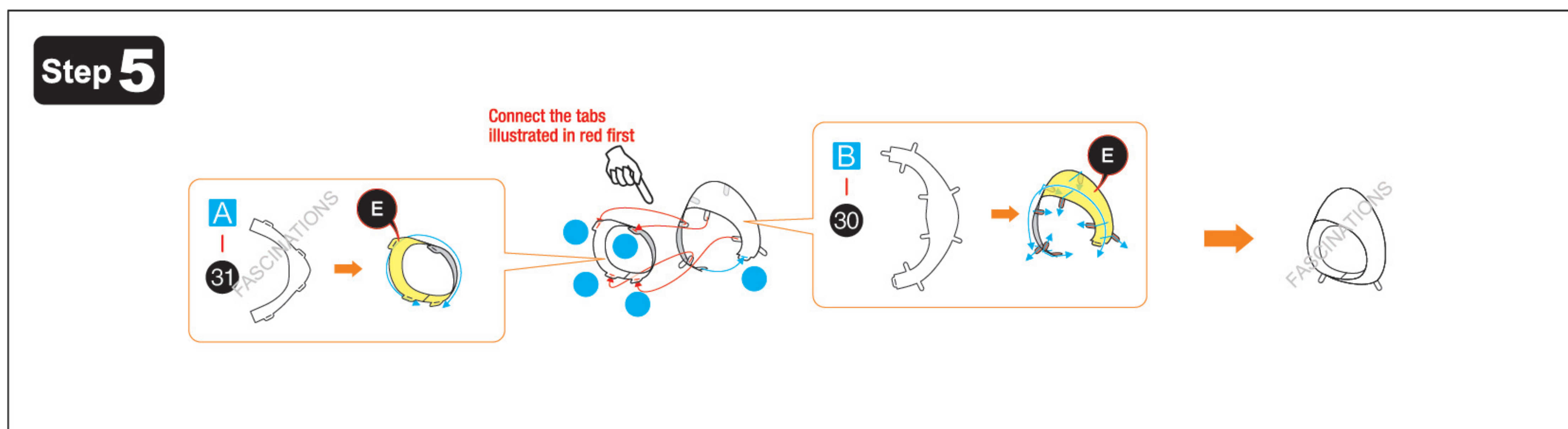
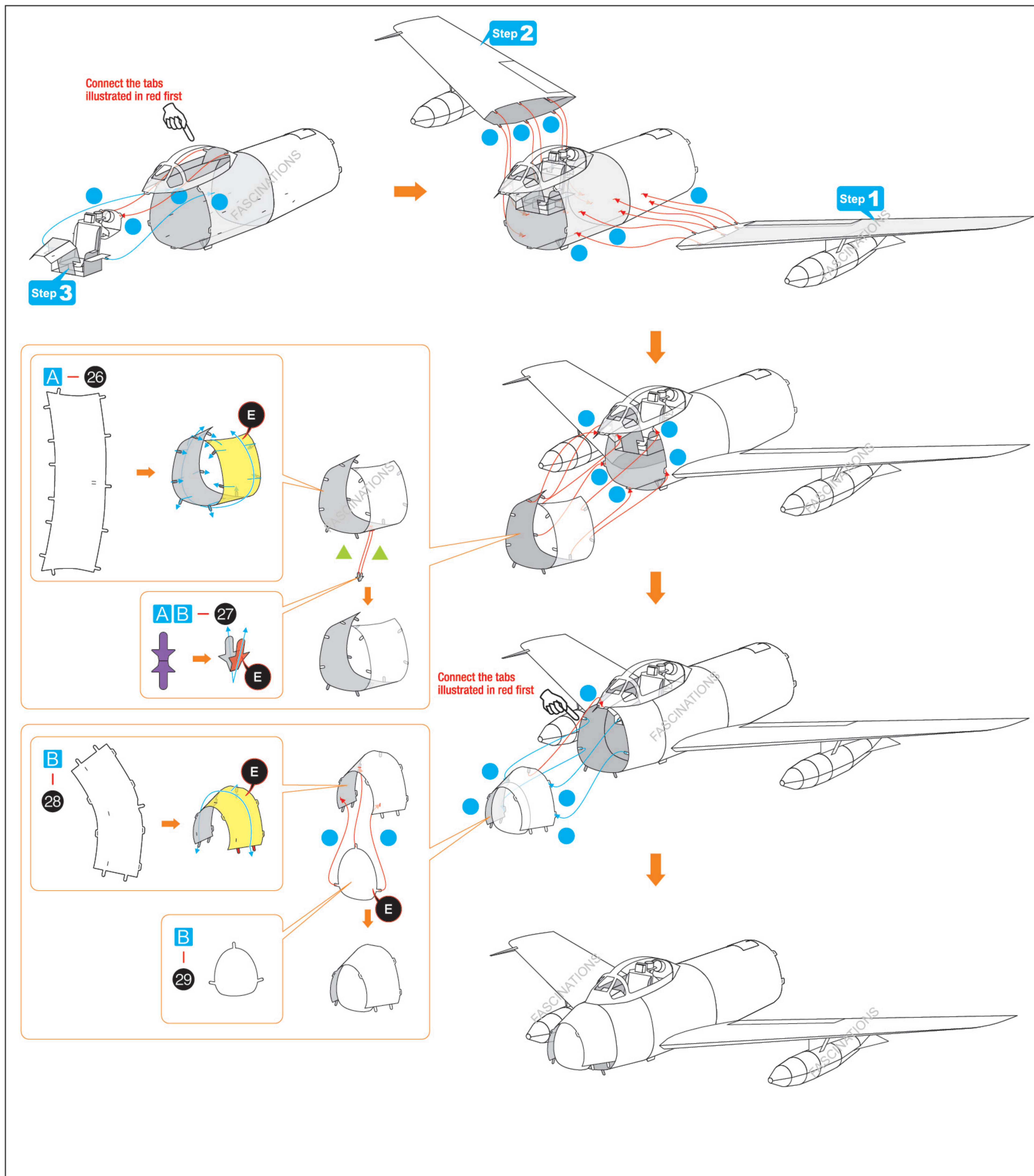


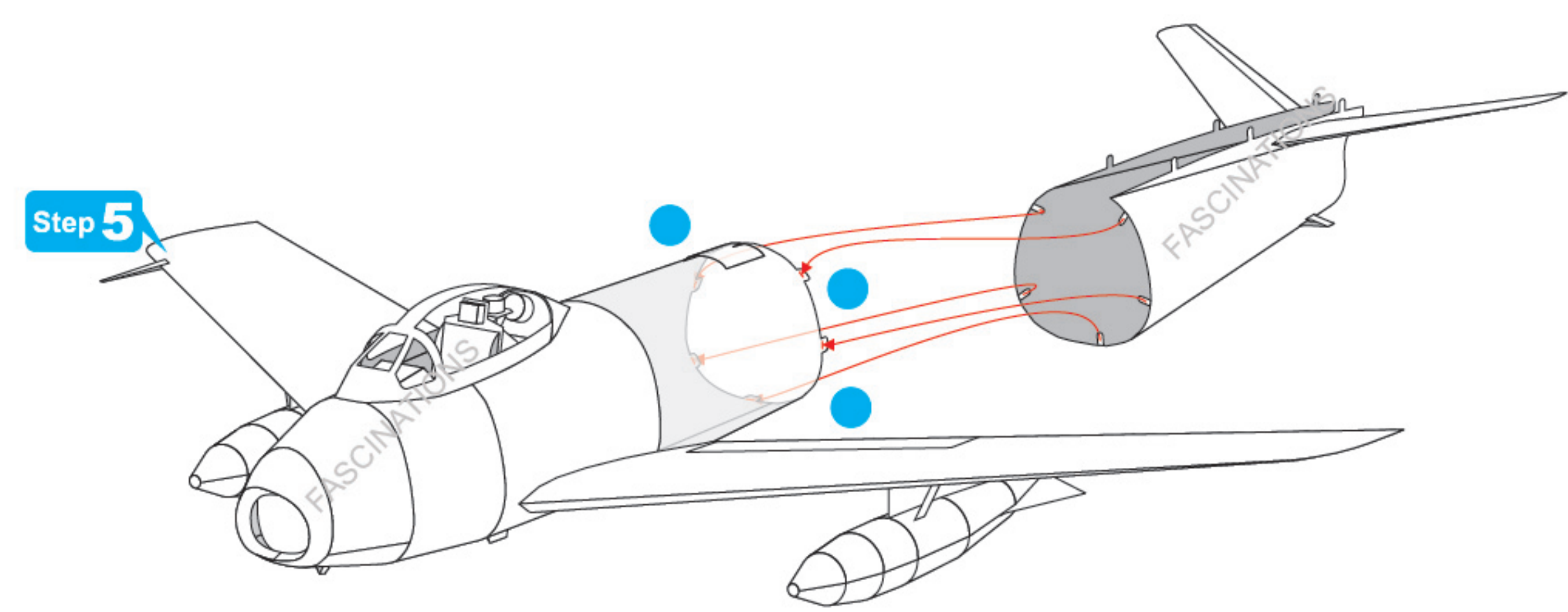
Step 3



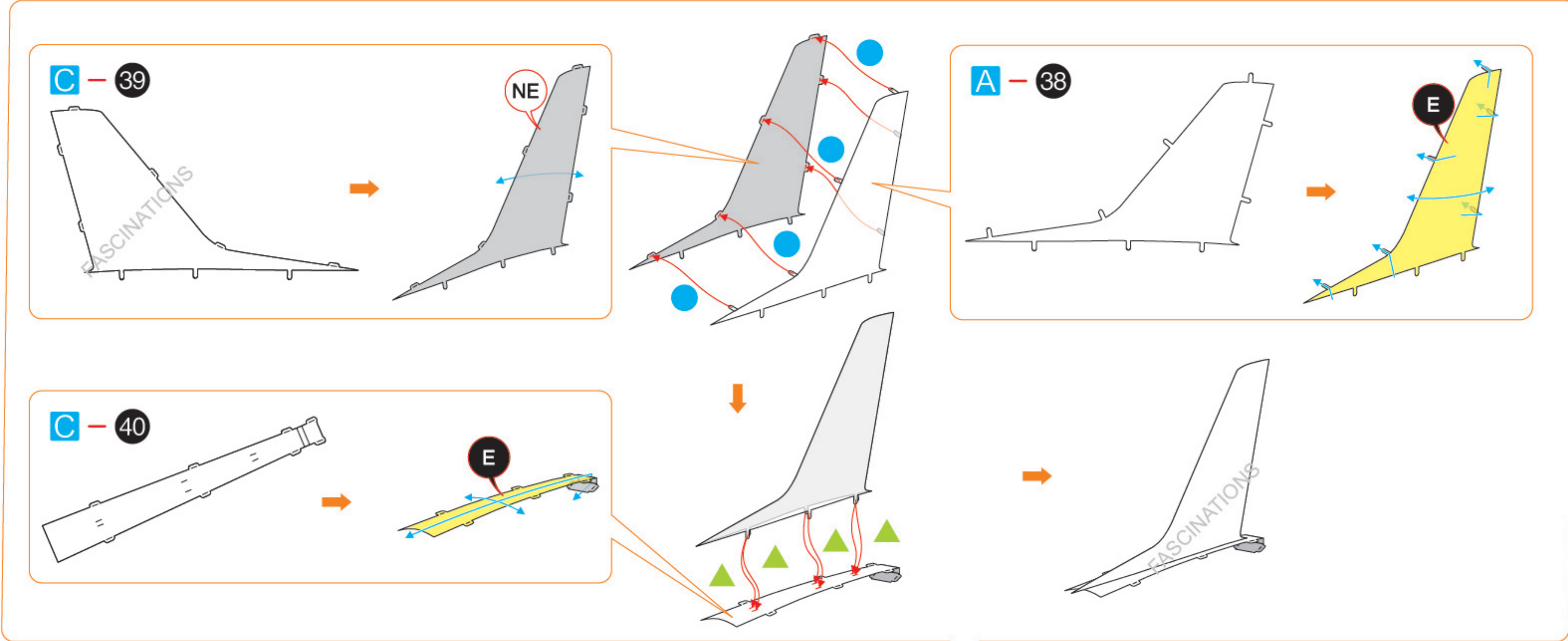
Step 4



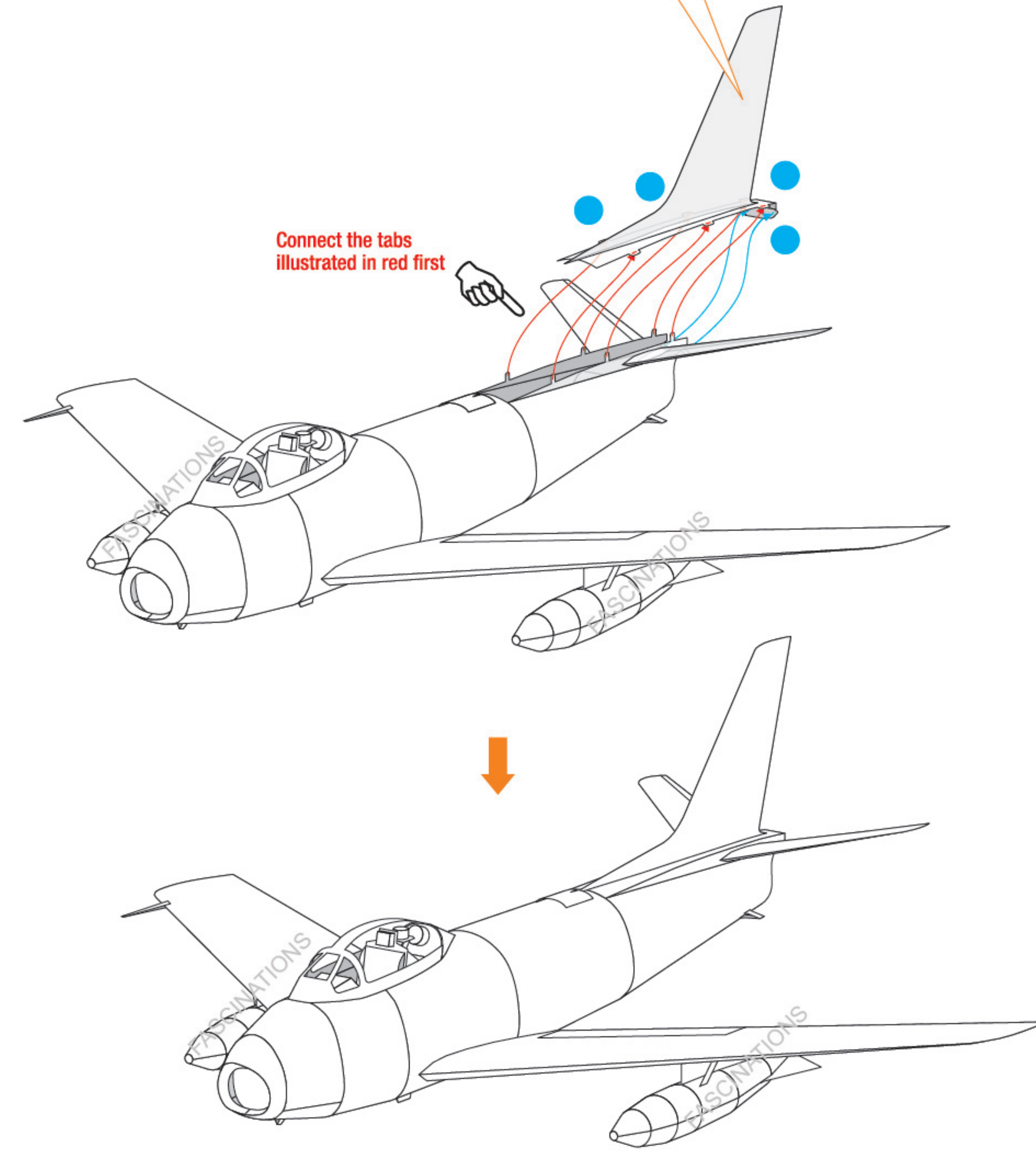




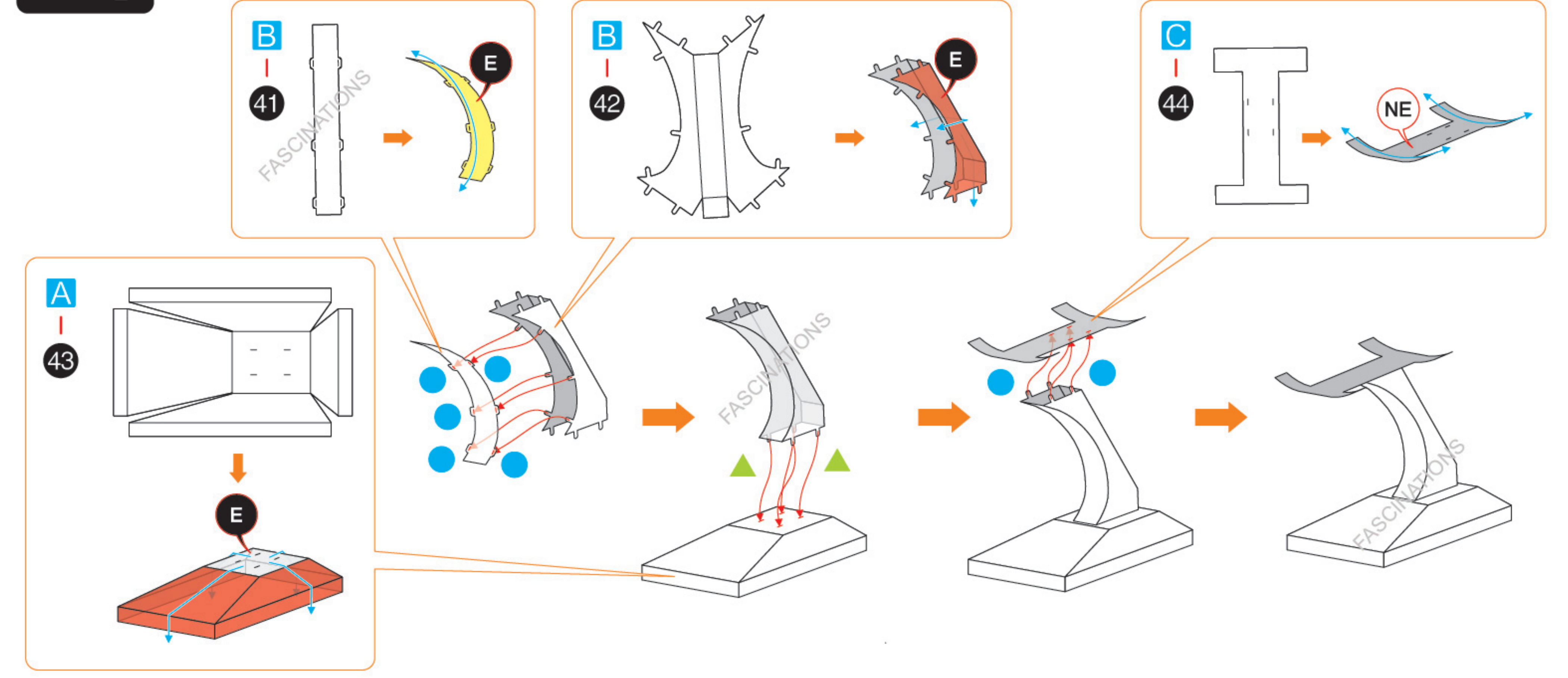
Step 5



Connect the tabs illustrated in red first



Step 7



Step 8

Step 6

Step 7

