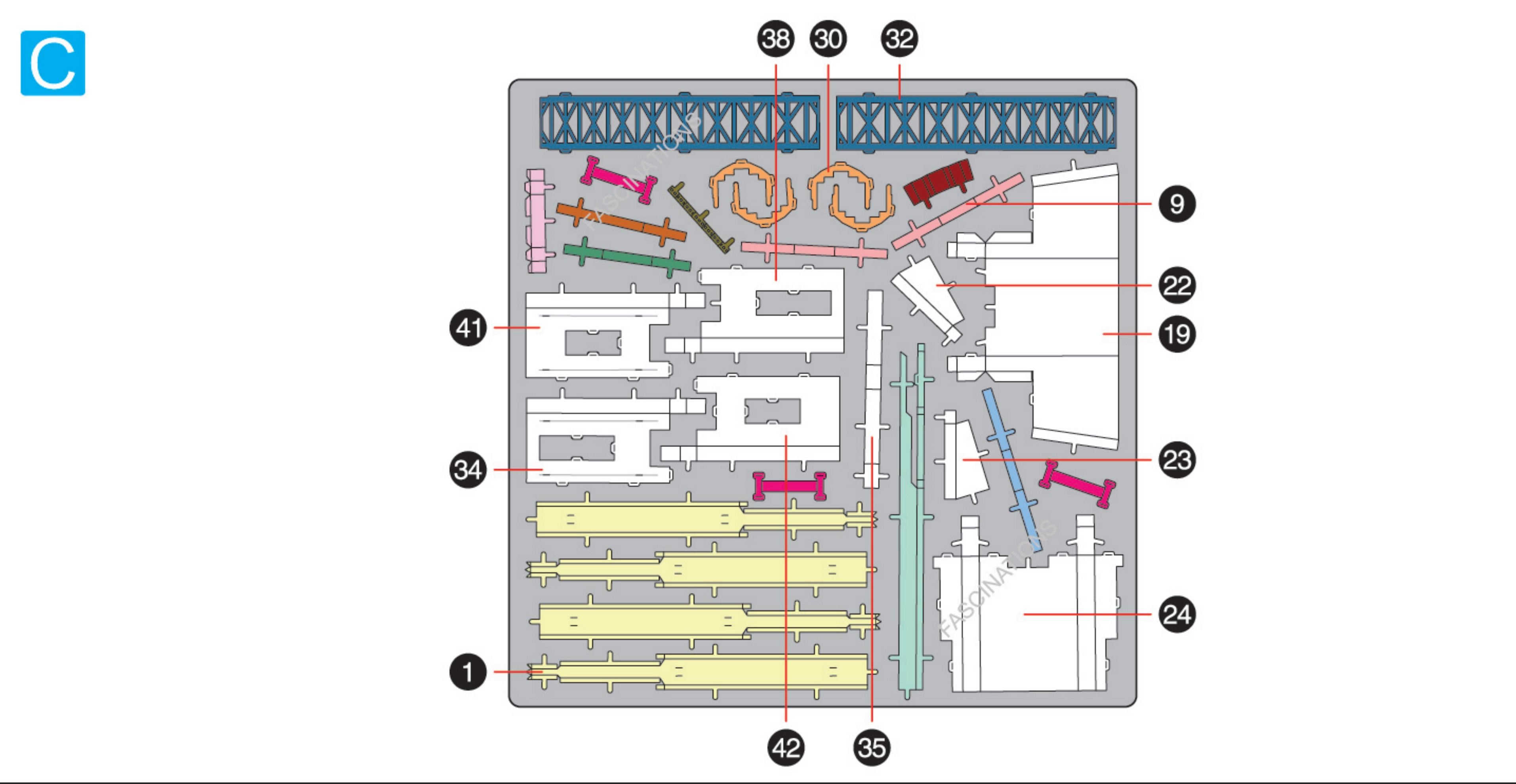
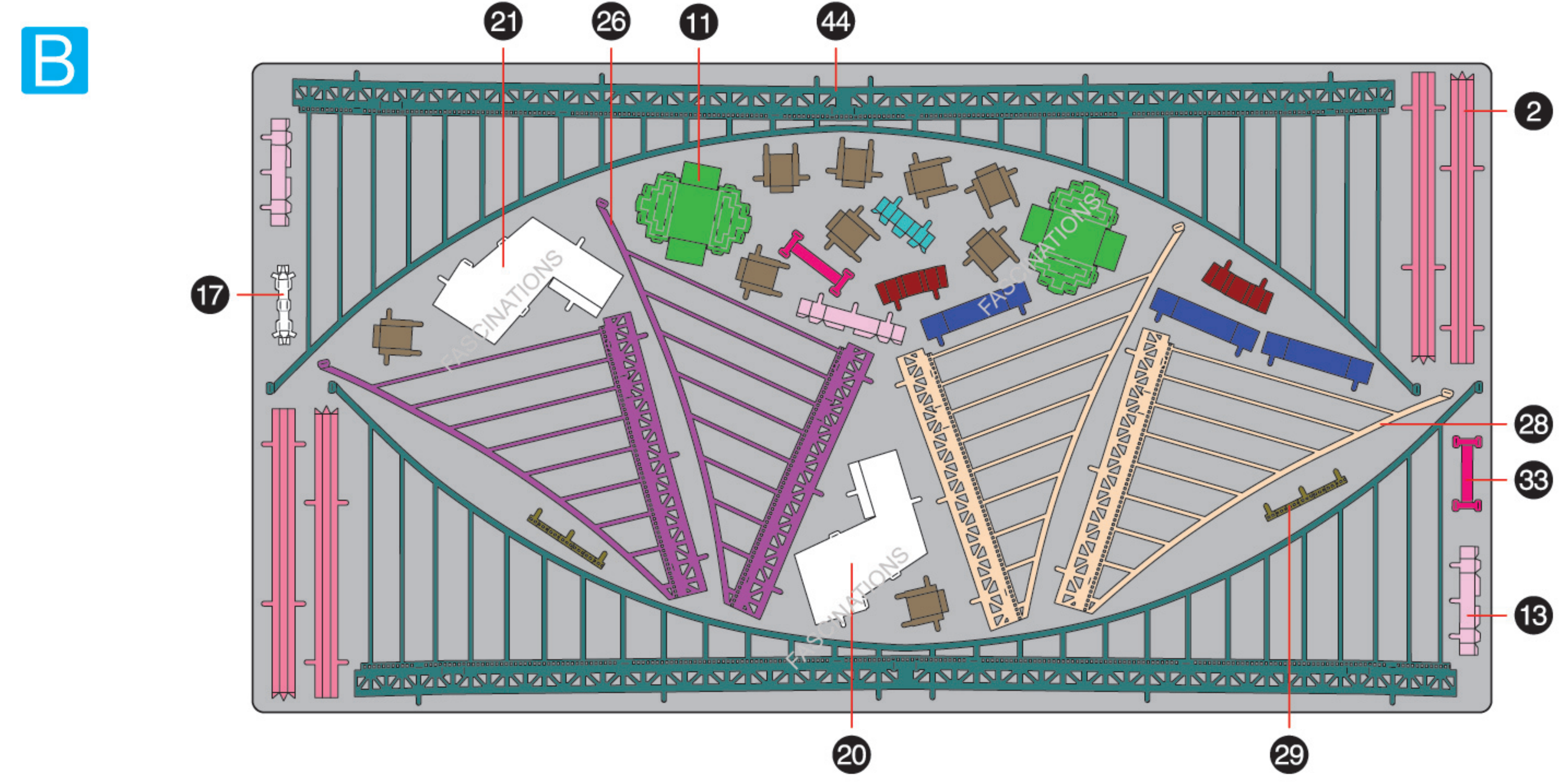
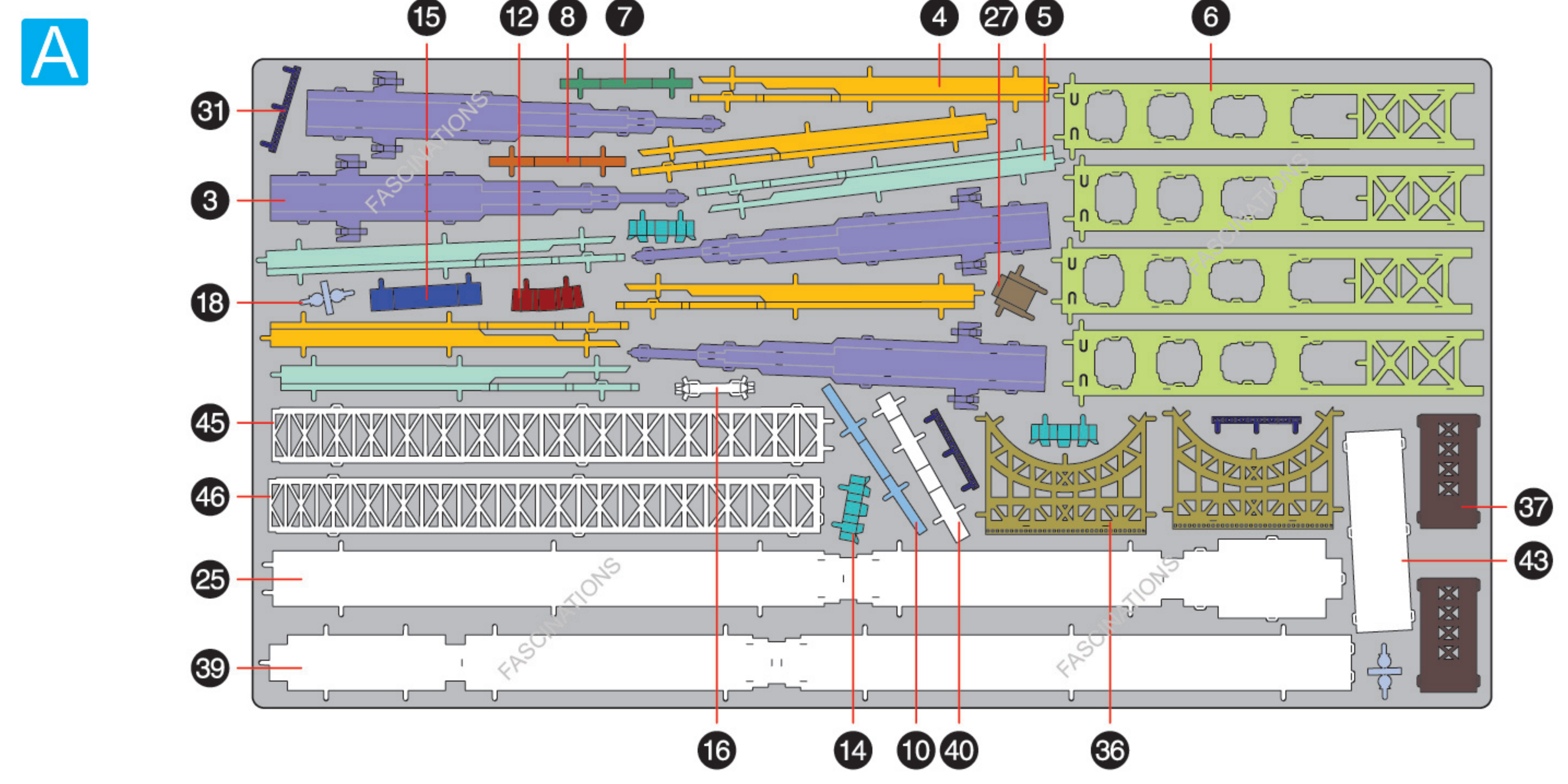


**METAL SHEETS**

Parts with same color are duplicates



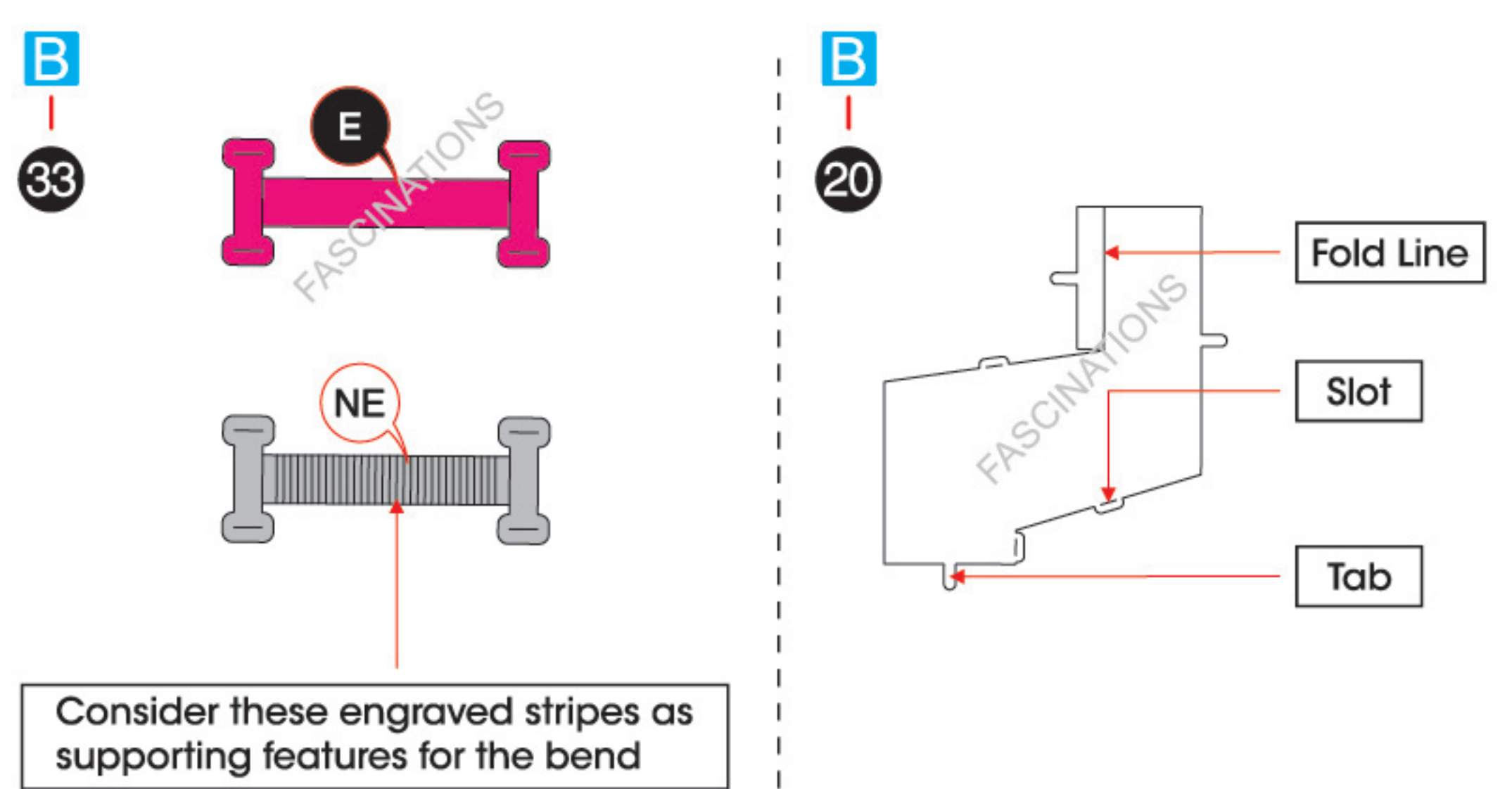
It is highly recommended that you visit [www.metalearth.com/360/PS2013](http://www.metalearth.com/360/PS2013) to see the completed model before assembling your own

**Premium Series**

**PS2013 GOLDEN GATE BRIDGE**



**TO CREATE THE BEST CONNECTIONS**



**Legends:**

- E** Engraved / Color side
- NE** Non - engraved / Silver side
- Attention point
- Insert tab and bend 90 degrees
- Insert tab and twist 90 degrees

**Assembly tip:**

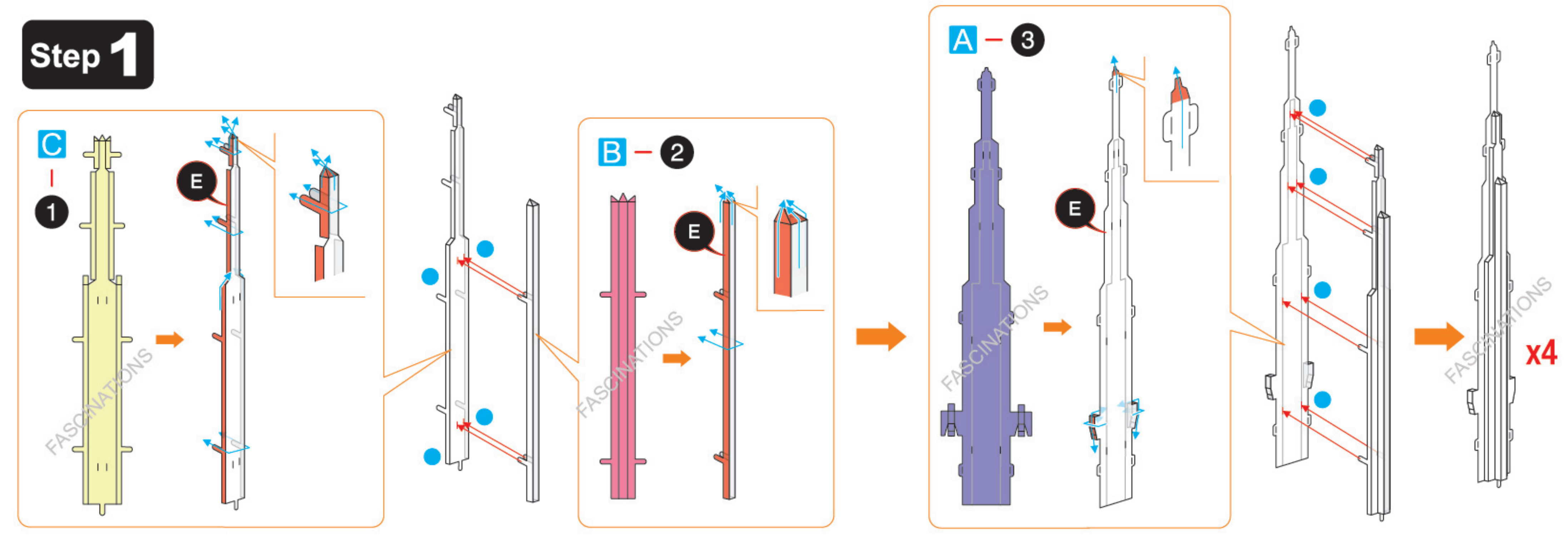
If needed, slightly twist tabs to hold parts together then untwist and bend them down for a nice finish.

- Yellow areas should be curled
- Red areas should be folded

**Recommended tools:**

- Wire cutters: helpful for taking parts from the metal sheets.
- Tweezers or needle nose pliers: helpful for folding parts, bending and twisting tabs.

**ASSEMBLY FLOW CHART**



**Step 2**

Diagram illustrating the assembly of the vertical frame structure. Part A-6 is attached to the top. Part A-4 is attached to the side rails. Part AC-5 is attached to the side rails, with a note 'NE' indicating a specific orientation. The final assembly is shown as a vertical frame with four units (x4).

**Step 3**

Diagram illustrating the assembly of the vertical frame structure. Parts AC-7, AC-8, C-9, and AC-10 are attached to the side rails. The final assembly is shown as a vertical frame with two units (x2).

**Step 4**

Diagram illustrating the assembly of the vertical frame structure. Part B-11 is attached to the top. Parts ABC-12, BC-13, AB-14, and AB-15 are attached to the base. A note 'Connect the tabs illustrated in red first' is present. The final assembly is shown as a vertical frame with two units (x2).

**Step 5**

Diagram illustrating the assembly of the vertical frame structure. Part A-16 is attached to the top. Part E is attached to the side rails. The final assembly is shown as a vertical frame with four units (x4).

**Step 6**

Diagram illustrating the assembly of the vertical frame structure. Part A-18 is attached to the top. Part B-17 is attached to the side rails. Part E is attached to the side rails. The final assembly is shown as a vertical frame with four units (x4).

**Step 7**

Diagram illustrating the assembly of the vertical frame structure. Parts C-22, C-23, C-24, B-20, B-21, and C-19 are attached to the side rails. A note 'Connect the tabs illustrated in red first' is present. The final assembly is shown as a vertical frame with two units (x2).

**Step 5**

Diagram illustrating the assembly of the vertical frame structure. Part A-25 is attached to the top. Part E is attached to the side rails. A note 'Connect the tabs illustrated in red first' is present. The final assembly is shown as a vertical frame with two units (x2).

**Step 8**

B - 26

NE

AB - 27 E

x2

**Step 9**

B - 28

E

AB - 27 E

x2

**Step 10**

Connect the tabs illustrated in red first

Step 9

Step 8

Step 7

BC - 29 NE

C - 30 E

A - 31 E

C - 30 E

BC - 33 NE

C - 32

Connect the tabs illustrated in red first

**Step 11**

A - 36 x2

A - 37

C - 38 NE

C - 34 E

C - 35 E

A - 39 E

A - 37

Connect the tabs illustrated in red first

Connect the tabs illustrated in red first

A - 43 NE

A - 40 E

C - 41 NE

C - 42 E

Step 6

Step 9

Step 8

Connect the tabs illustrated in red first

