

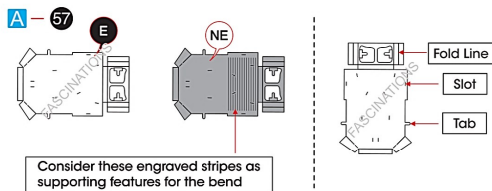


It is highly recommended that you visit [www.metalearth.com/360/ICX253](http://www.metalearth.com/360/ICX253) to see the completed model before assembling your own



## ICX253 SCORPION GUNSHIP

### TO CREATE THE BEST CONNECTIONS



**Legends:**

- E** Engraved/ Color side
- NE** Non - engraved/ Silver side
- Attention point
- Insert tab and bend 90 degrees
- Insert tab and twist 90 degrees

**Assembly tip:**

If needed, slightly twist tabs to hold parts together then untwist and bend them down for a nice finish.

- Yellow areas should be curled
- Red areas should be folded

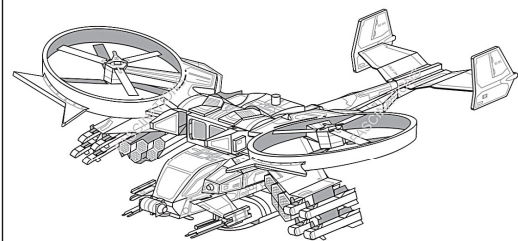
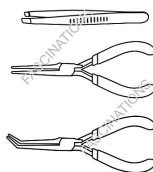
In order to avoid possible injury from sharp edges, please carefully discard the metal sheets after parts have been removed.

**Recommended tools:**

- Wire cutters: helpful for taking parts from the metal sheets.

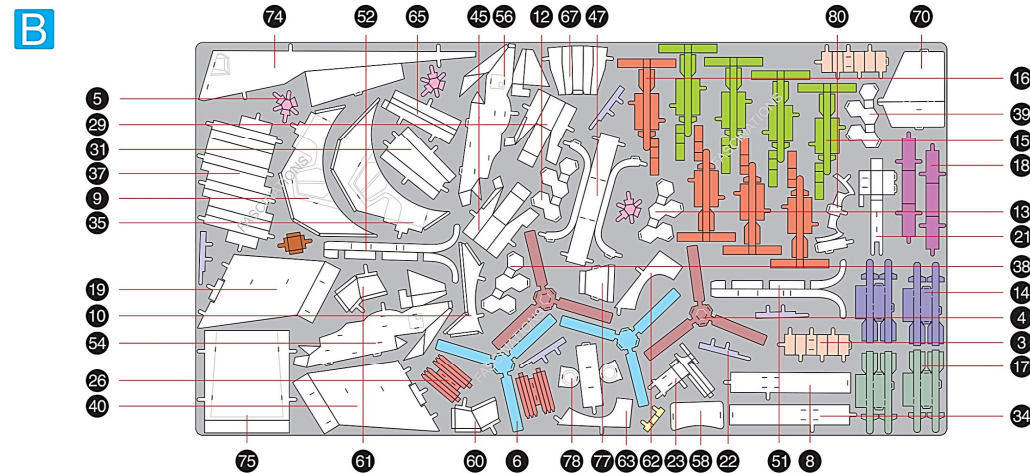
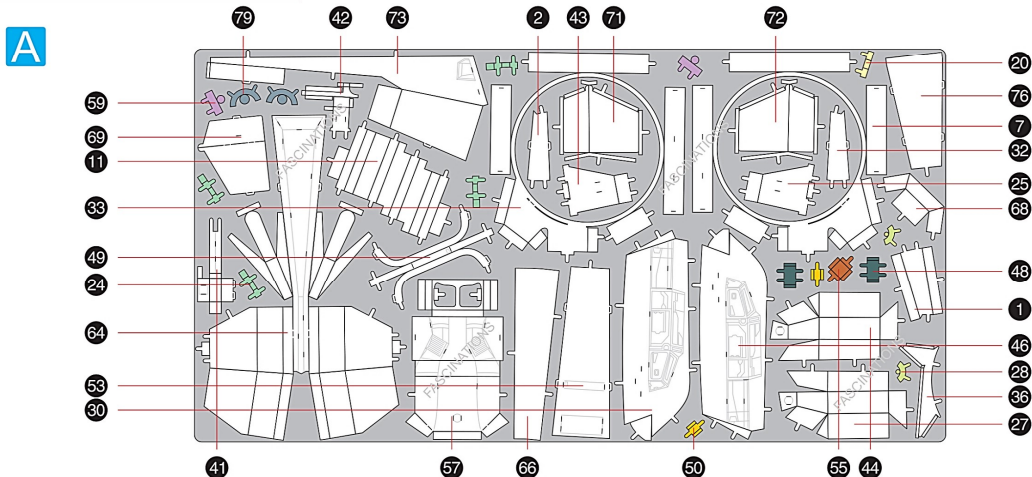


- Tweezers or needle nose pliers: helpful for folding parts, bending and twisting tabs.



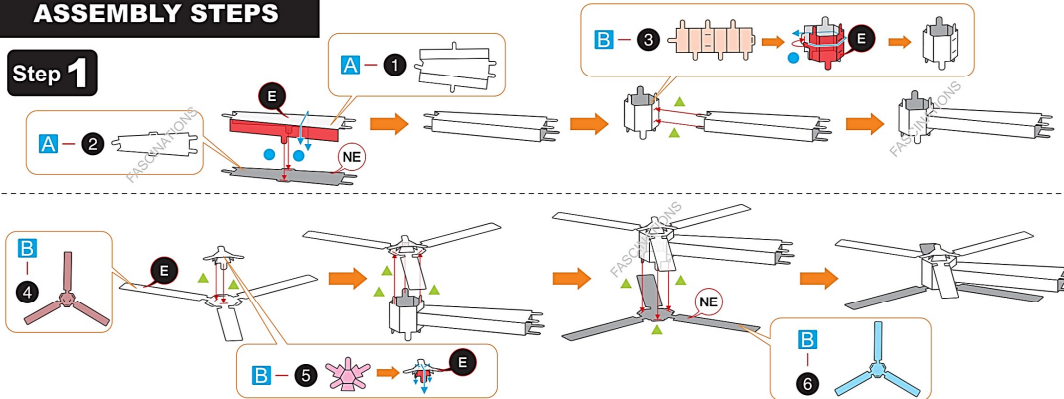
### METAL SHEETS

Parts with same color are duplicates

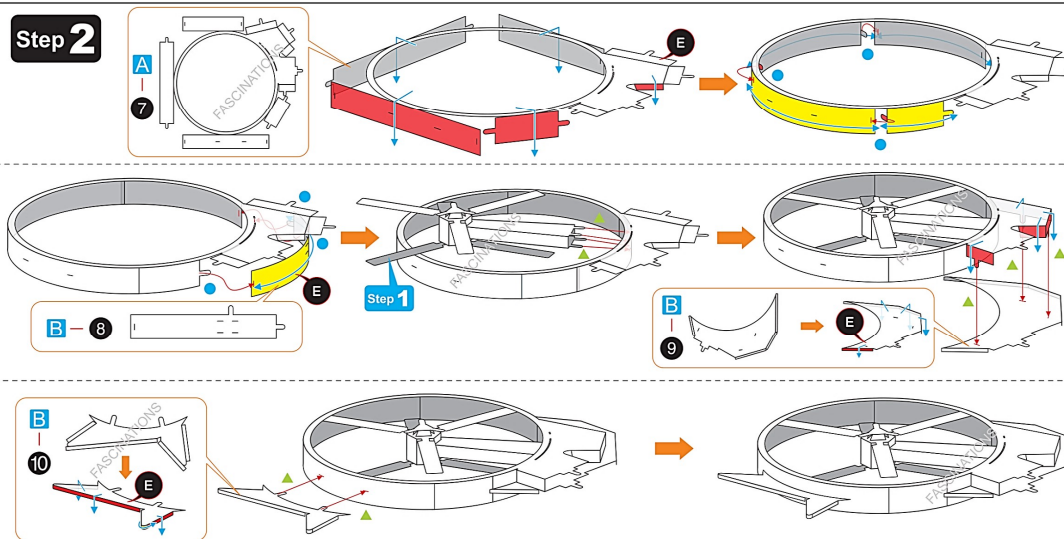


### ASSEMBLY STEPS

#### Step 1



#### Step 2



**Step 3**

Diagram illustrating Step 3 assembly. It shows the assembly of a component using parts A-11, B-12, and E. A note indicates: "Bend according to the shape".

**Step 4**

Diagram illustrating Step 4 assembly. It shows the assembly of a component using parts B-14, B-15, and E. The final assembly is shown as X2.

**Step 5**

Diagram illustrating Step 5 assembly. It shows the assembly of a component using parts B-16 and B-17. The final assembly is shown as X2.

**Step 6**

Diagram illustrating Step 6 assembly. It shows the assembly of a component using parts B-18 and B-19. The final assembly is shown as X2.

**Step 7**

Diagram illustrating Step 7 assembly. It shows the assembly of a component using parts B-19 and B-20. The final assembly is shown as X2.

**Step 8**

Diagram illustrating Step 8 assembly. It shows the assembly of a component using parts A-20, B-21, B-22, B-23, A-24, and A-25. The final assembly is shown as X2.

**Step 9**

Diagram illustrating Step 9 assembly. It shows the assembly of a component using parts A-27, A-28, and E. The final assembly is shown as X2.

**Step 10**

Diagram illustrating Step 10 assembly. It shows the assembly of a component using parts B-29, A-30, and E. The final assembly is shown as X2.

**Step 11**

Diagram illustrating Step 11 assembly. It shows the assembly of a component using parts B-31, B-3, A-32, B-4, and B-5. A note indicates: "Rotate".

**Step 12**

Diagram illustrating Step 12 assembly. It shows the assembly of a component using parts A-33, B-34, and B-35. The final assembly is shown as X2.

**Step 13**

Diagram illustrating Step 13 assembly. It shows the assembly of a component using parts B-37, B-38, and B-39. A note indicates: "Bend according to the shape".



**Step 14**

Diagram showing the assembly of a component. Part B (40) is attached to the structure. Step 13 shows the previous step. Step 6 shows a component being inserted into the assembly.

**Step 15**

Diagram showing the assembly of a component. Part A (41) and Part B (20) are attached. Part B (22) is also shown as a separate component.

Diagram showing the assembly of a component. Part A (42) and Part A (24) are attached. Part B (26) is also shown as a separate component.

**Step 16**

Diagram showing the assembly of a component. Part A (44) and Part A (28) are attached.

**Step 17**

Diagram showing the assembly of a component. Part B (45) is attached. Step 16 and Step 15 are also indicated.

**Step 18**

Diagram showing the assembly of a component. Part B (47) and Part A (48) X2 are attached.

**Step 19**

Diagram showing the assembly of a component. Part A (49) and Part A (50) X2 are attached.

**Step 20**

Diagram showing the assembly of a component. Part B (51) and Part B (52) are attached. Part A (53) is also shown as a separate component.

**Step 21**

Diagram showing the assembly of a component. Part AB (55) and Part B (54) are attached.

**Step 22**

Diagram showing the assembly of a component. Part AB (55) and Part B (56) are attached.

**Step 23**

Diagram showing the assembly of a component. Part A (57) and Part B (58) are attached.

Diagram showing the assembly of a component. Part B (60) and Part B (61) are attached. Step 22 and Step 21 are also indicated.

**Step 24**

Diagram showing the final assembly of the model. Step 2, Step 7, Step 23, Step 14, and Step 12 are indicated.

### Step 25

