

QUIDDITCH™ PITCH

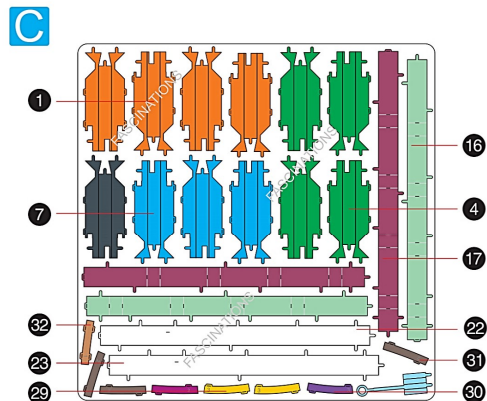
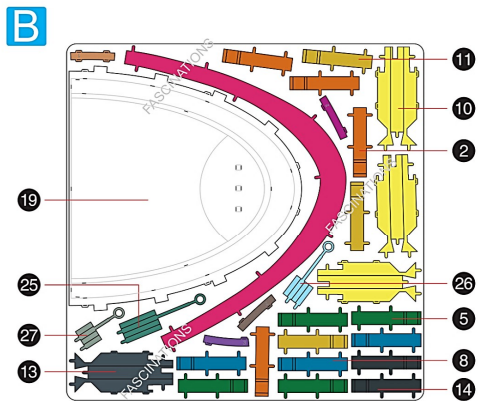
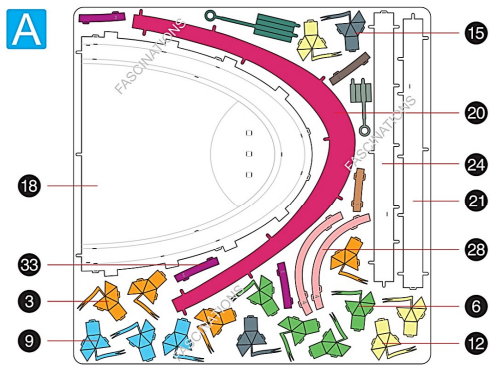
MMS466



It is highly recommended that you visit www.metalearth.com/360/mms466 to see the completed model before assembling your own

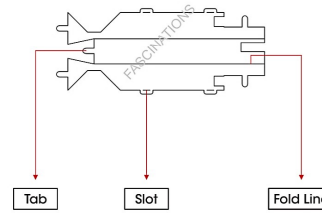
METAL SHEETS

Parts with same color are duplicates



TO CREATE THE BEST CONNECTIONS

C - 1

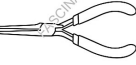


Legends:

- Engraved/ Color side
- Non - engraved/ Silver side
- Attention point
- Insert tab and bend 90 degrees
- Insert tab and twist 90 degrees

Recommended tools:

- Wire cutters: helpful for taking parts from the metal sheets.
- Tweezers or needle nose pliers: helpful for folding parts, bending and twisting tabs.



Assembly tip:

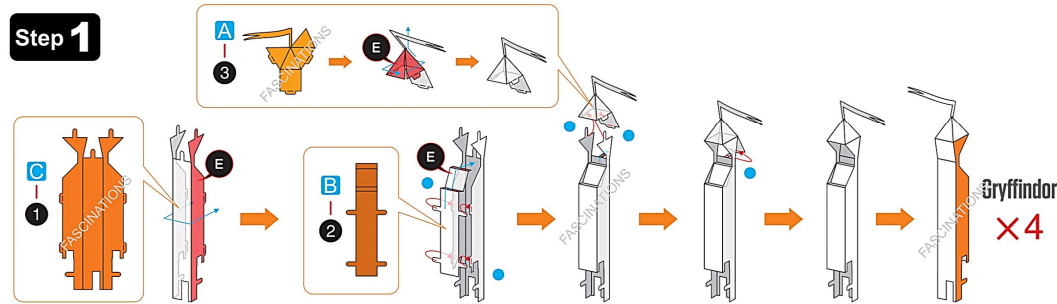
If needed, slightly twist tabs to hold parts together then untwist and bend them down for a nice finish.



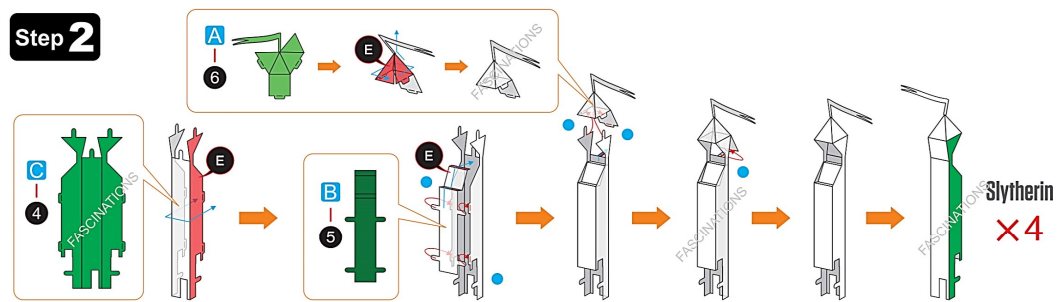
In order to avoid possible injury from sharp edges, please carefully discard the metal sheets after parts have been removed.

ASSEMBLY STEPS

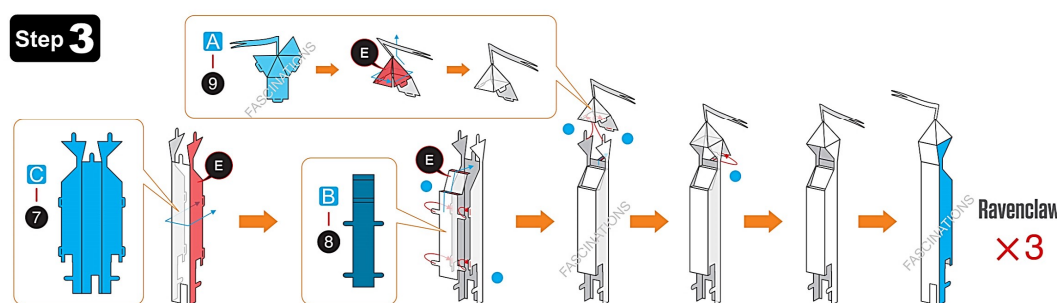
Step 1



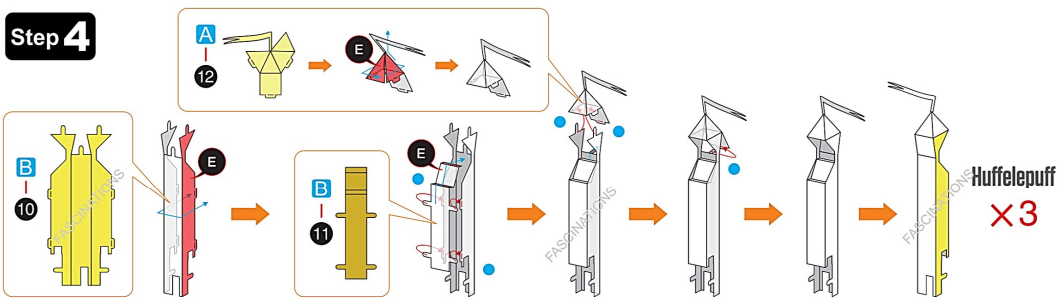
Step 2



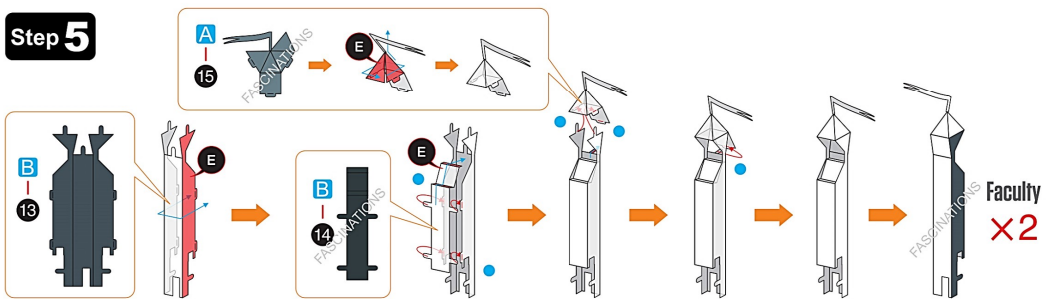
Step 3



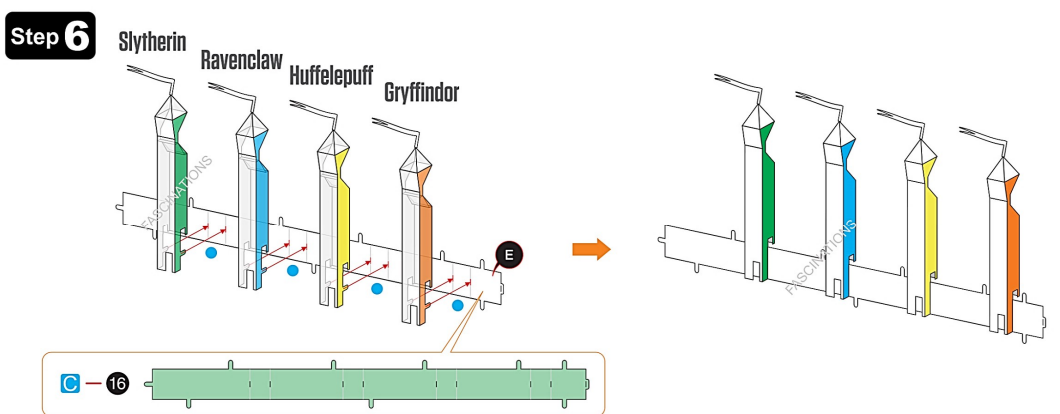
Step 4



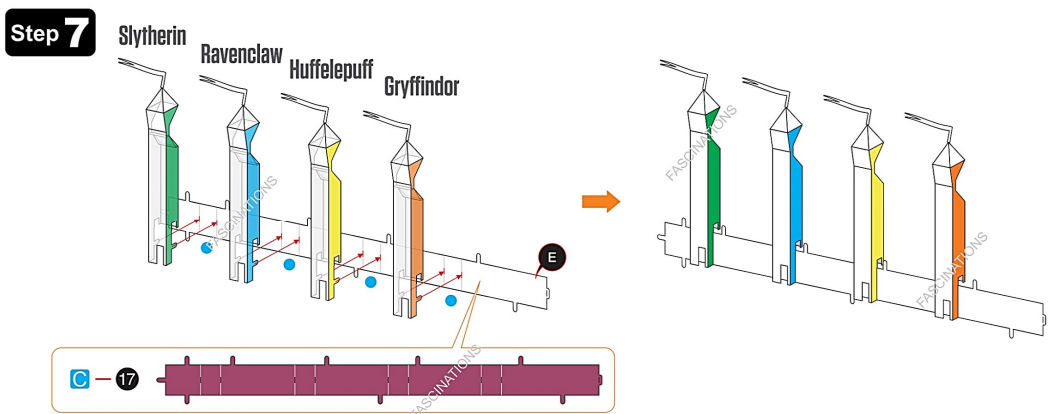
Step 5



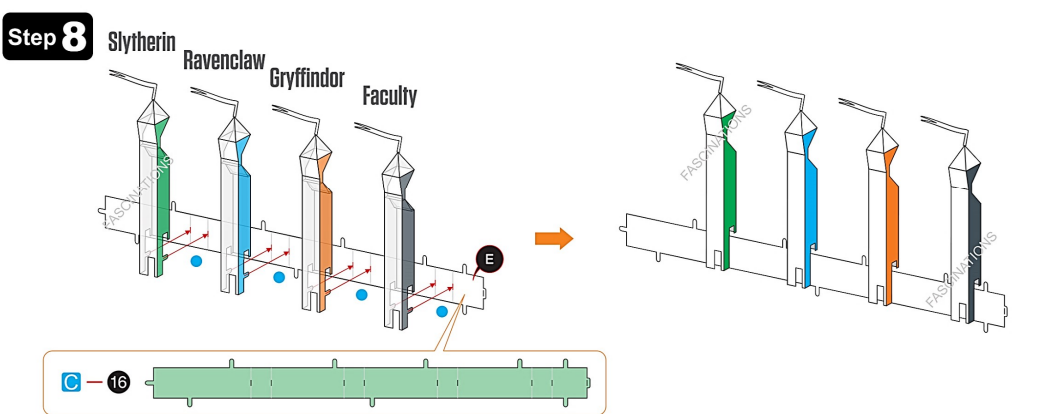
Step 6



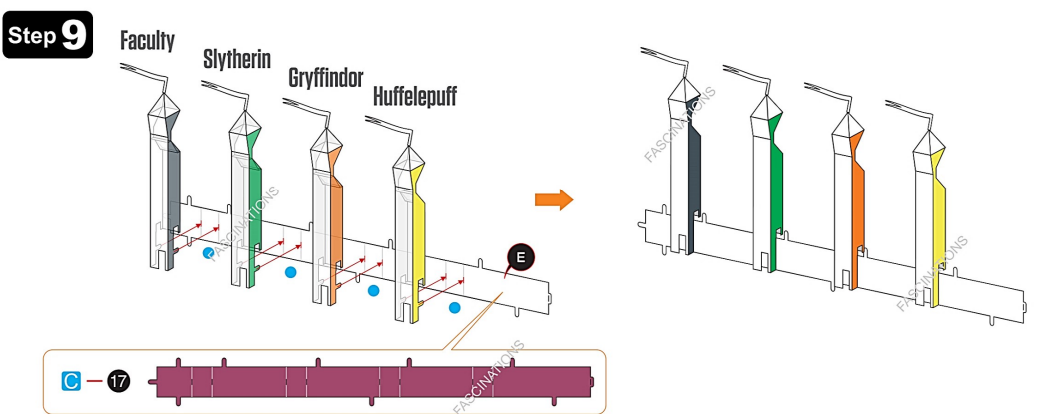
Step 7



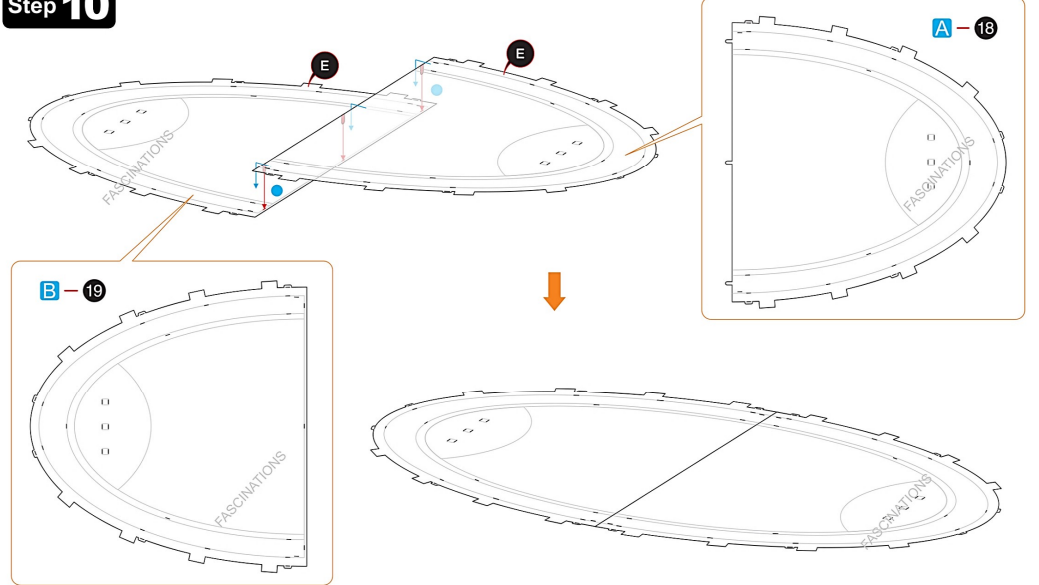
Step 8



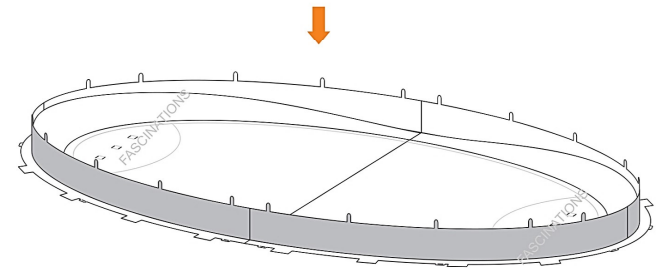
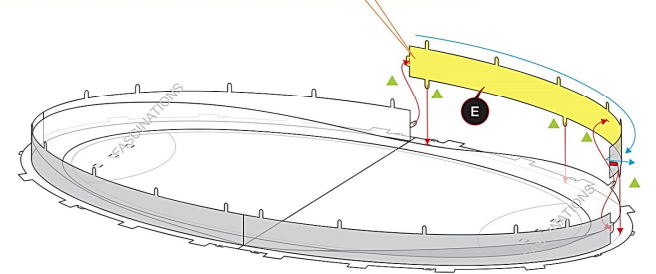
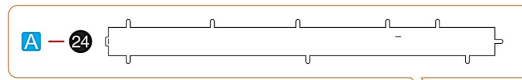
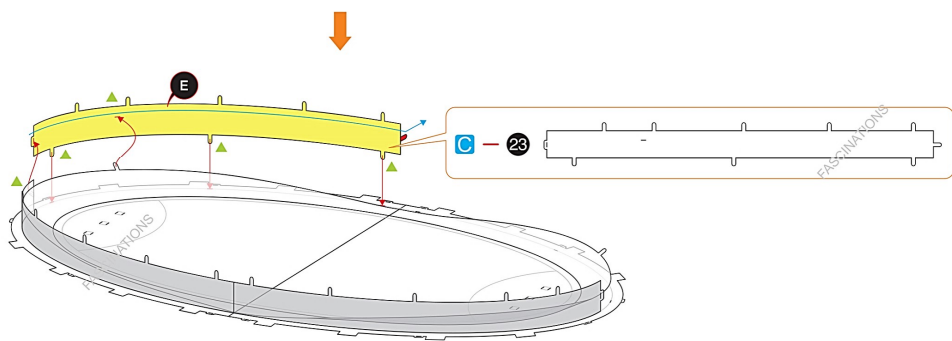
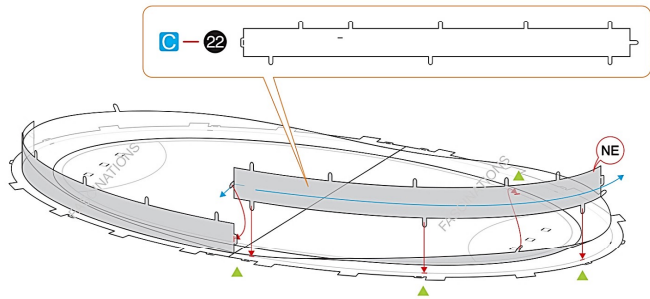
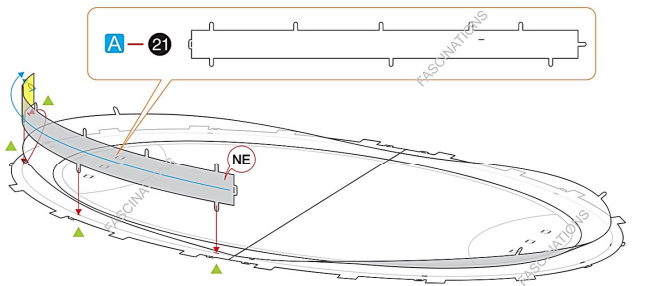
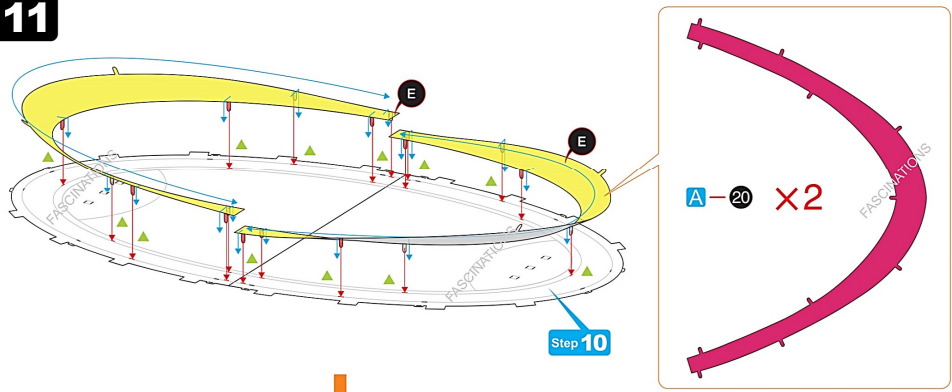
Step 9



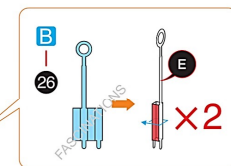
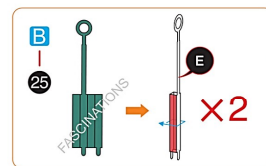
Step 10



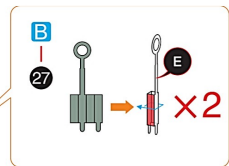
Step 11



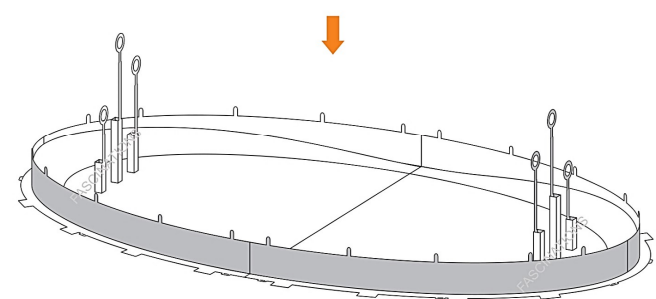
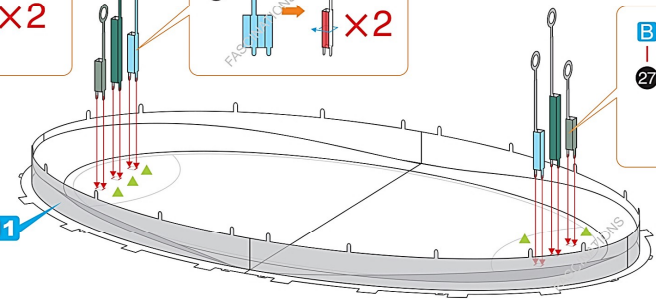
Step 12



The shortest pole is always on the left side



Step 11



Step 13

