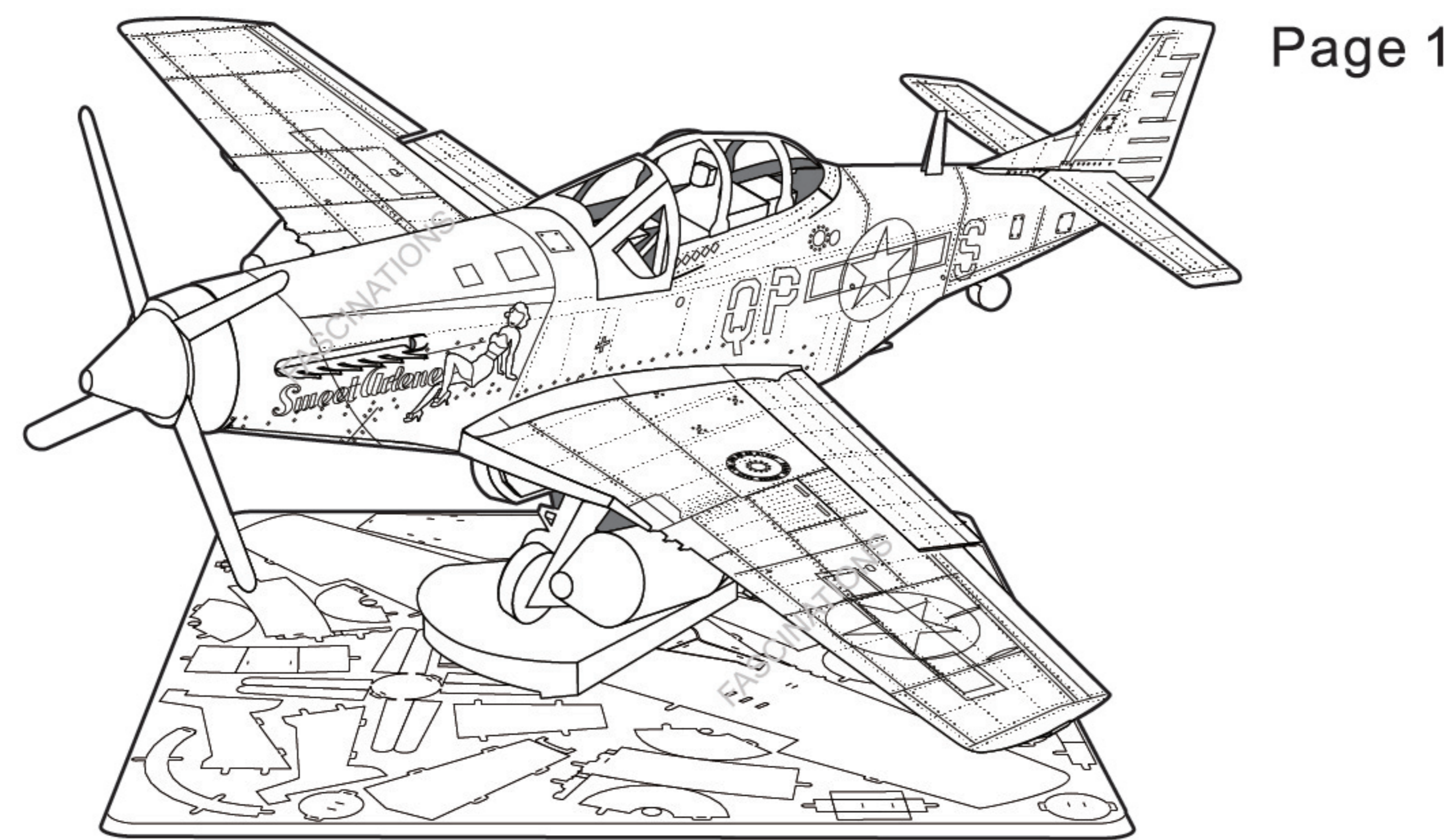




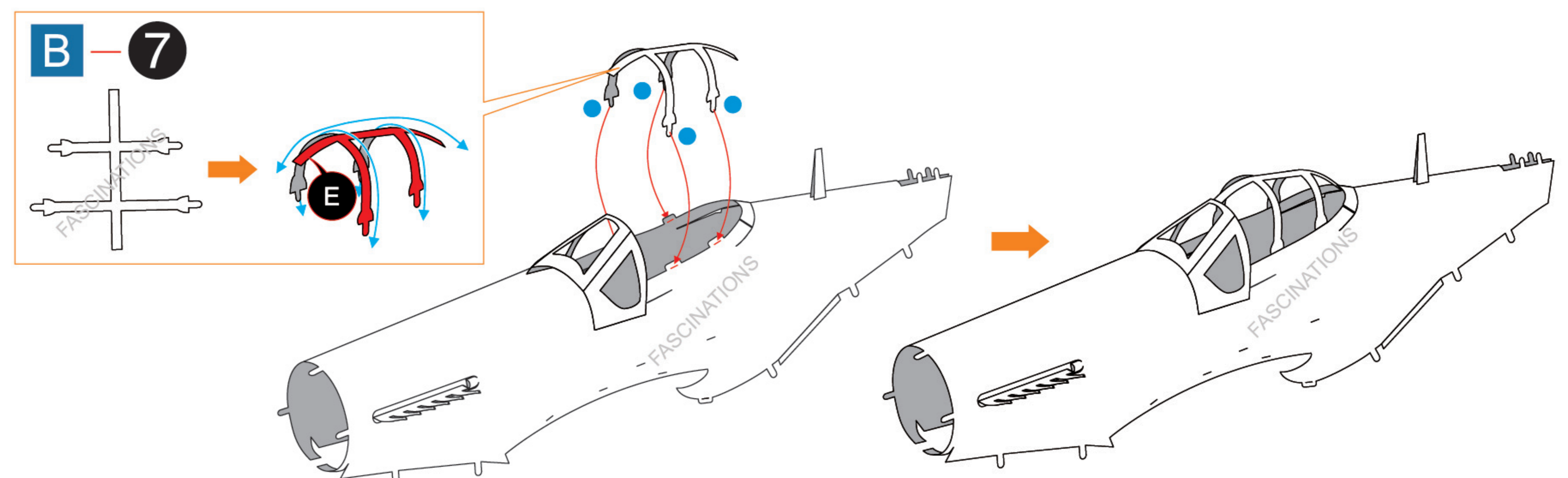
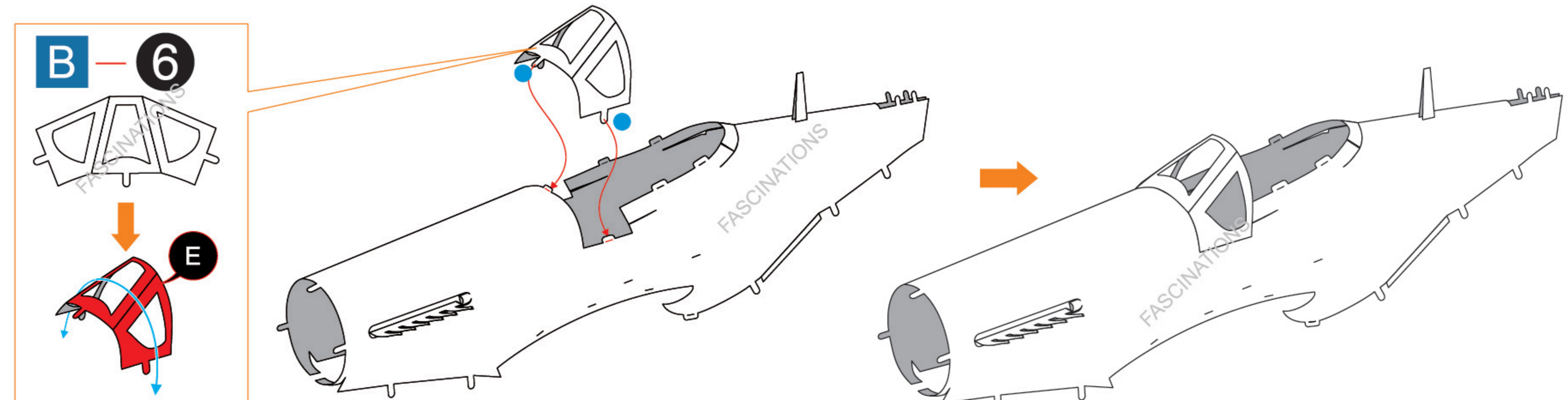
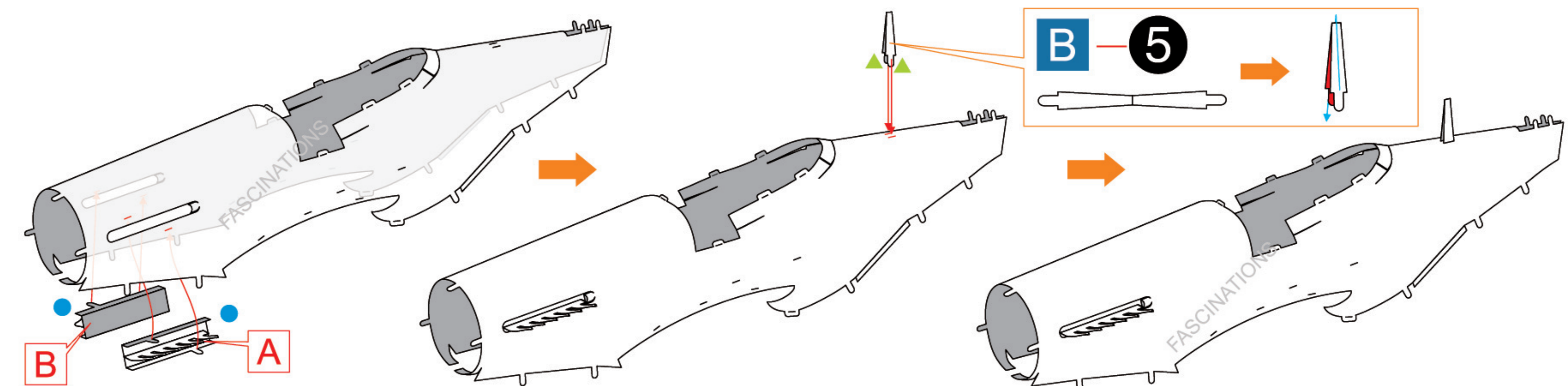
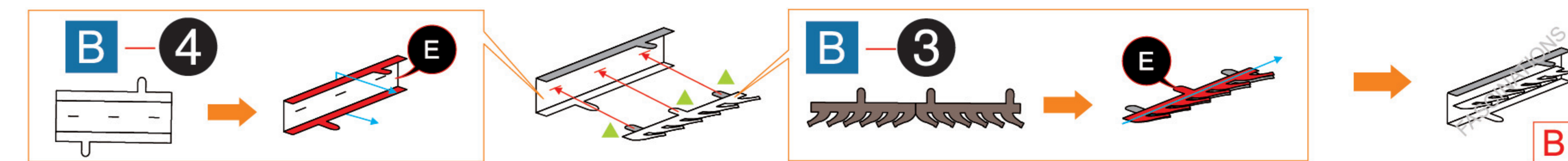
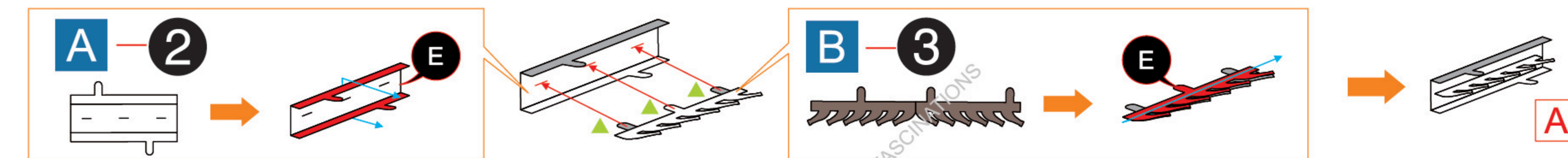
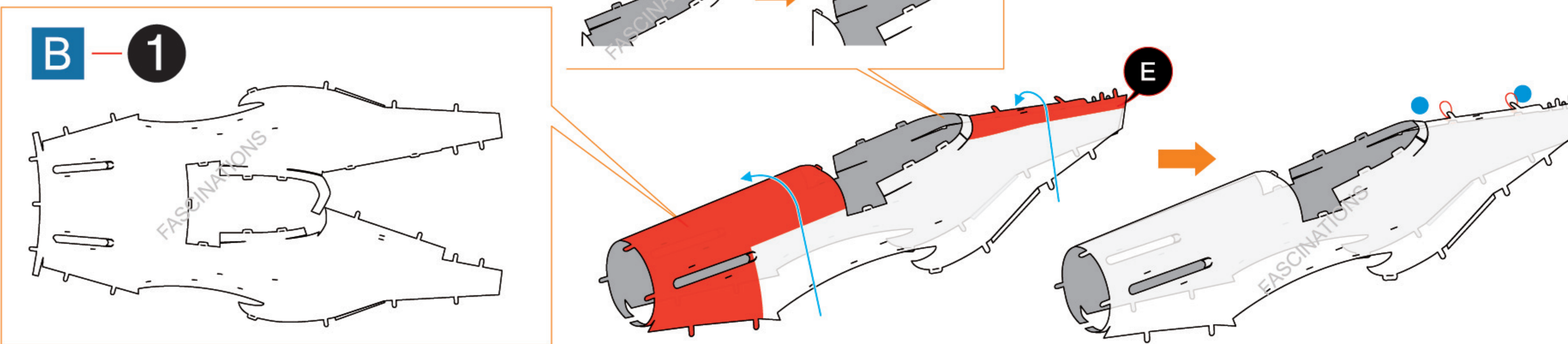
OPTIONAL: Instructions to assemble this model with a raised landing gear configuration can be found here: [www.metalearth.com/flyingp51](http://www.metalearth.com/flyingp51)



It is highly recommended that you visit [www.metalearth.com/360/mms180](http://www.metalearth.com/360/mms180) to see the completed model before assembling your own.



**P-51D MUSTANG™**  
*Sweet Arlene*

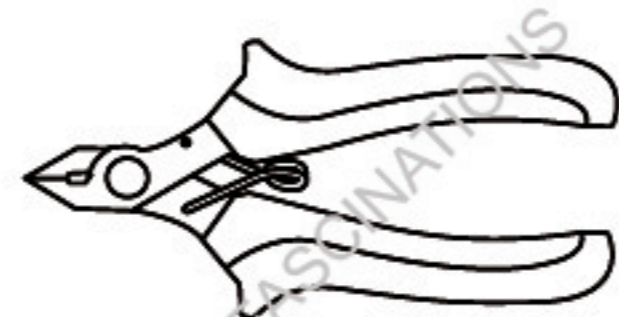


**Legends:**

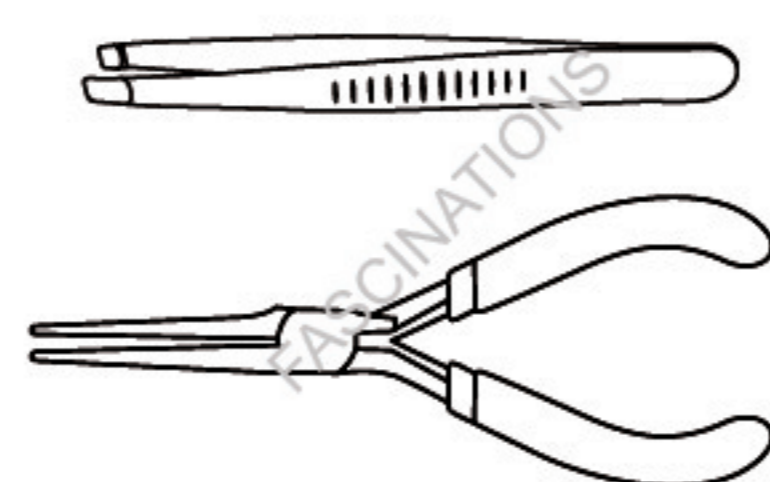
- E** Engraved/Color side
- NE** Non-engraved/Silver side
- Attention point
- Insert tab and bend 90 degrees
- Insert tab and twist 90 degrees

**Recommended tools:**

-Wire cutters: helpful for taking parts from the metal sheets.

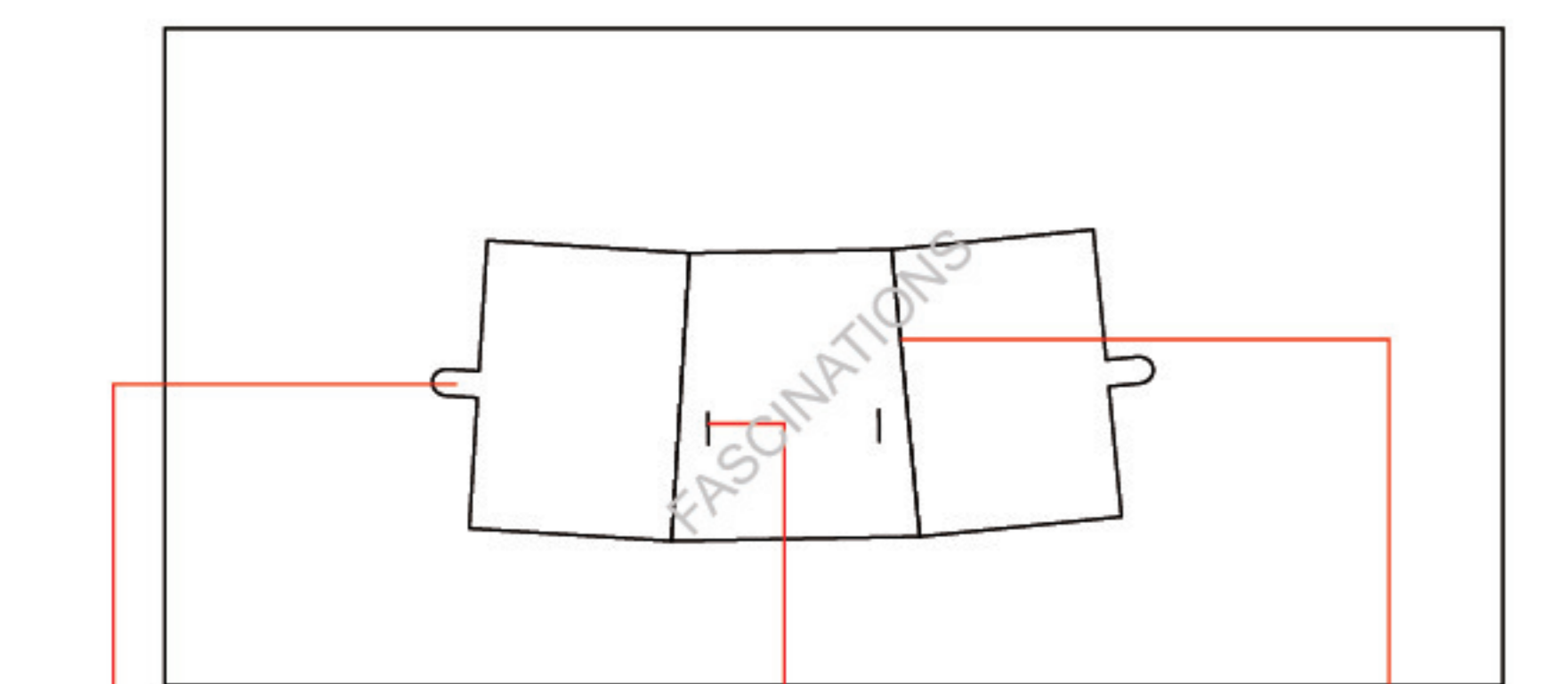


-Tweezers or needle nose pliers: helpful for folding parts, bending and twisting tabs.



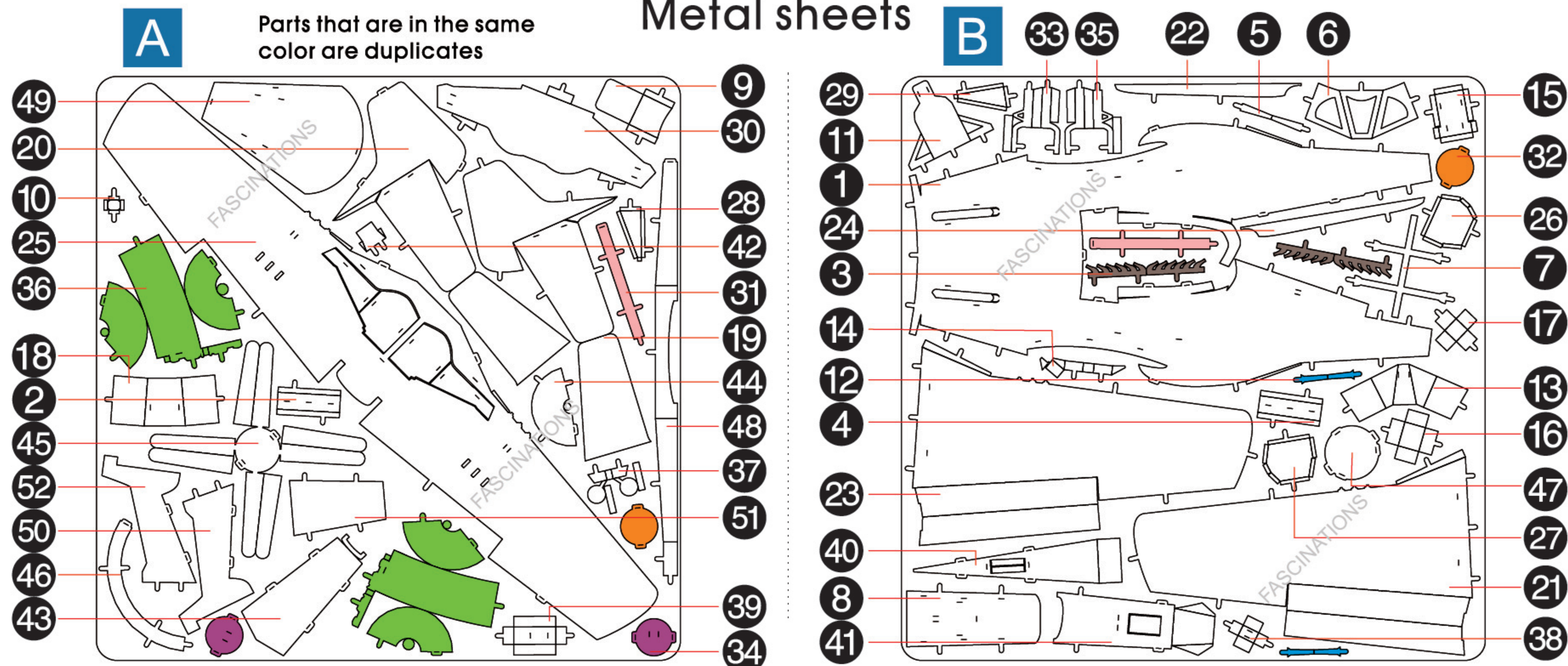
**Assembly tip:**

If needed, slightly twist tabs to hold parts together then untwist and bend them down for a nice finish



Insertion tabs are inserted and then folded  
Insertion holes  
Fold lines can be seen as shown here

**Metal sheets**



In order to avoid possible injury from sharp edges, please carefully discard the metal sheets after parts have been removed



