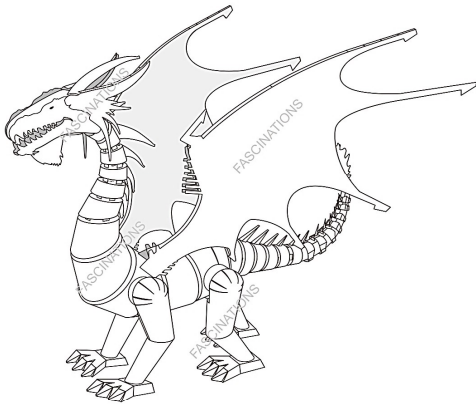




It is highly recommended that you visit www.metalearth.com/360/icx115 to see the completed model before assembling your own

3D METAL MODEL KITS

ICX115 Red Dragon



TO CREATE THE BEST CONNECTIONS



Legends:

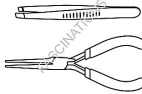
- Engraved/Color side
- Non-engraved/Silver side
- Attention point
- Insert tab and bend 90 degrees
- Insert tab and twist 90 degrees

Recommended tools:

-Wire cutters: helpful for taking parts from the metal sheets.



-Tweezers or needle nose pliers: helpful for folding parts, bending and twisting tabs.

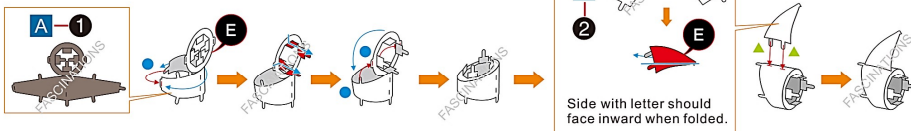


Assembly tip:

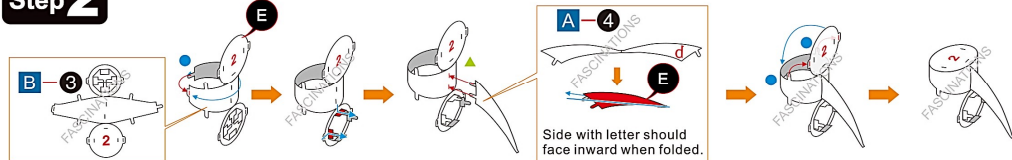
If needed, slightly twist tabs to hold parts together then untwist and bend them down for a nice finish

ASSEMBLY STEPS

Step 1



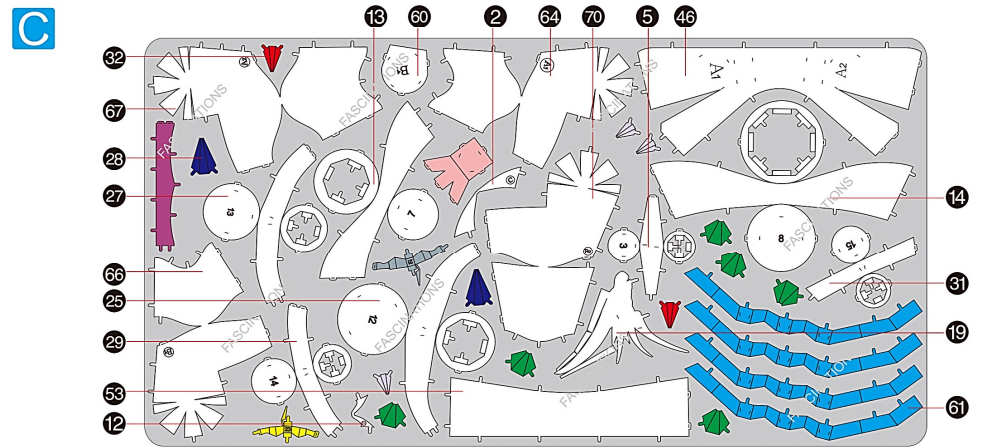
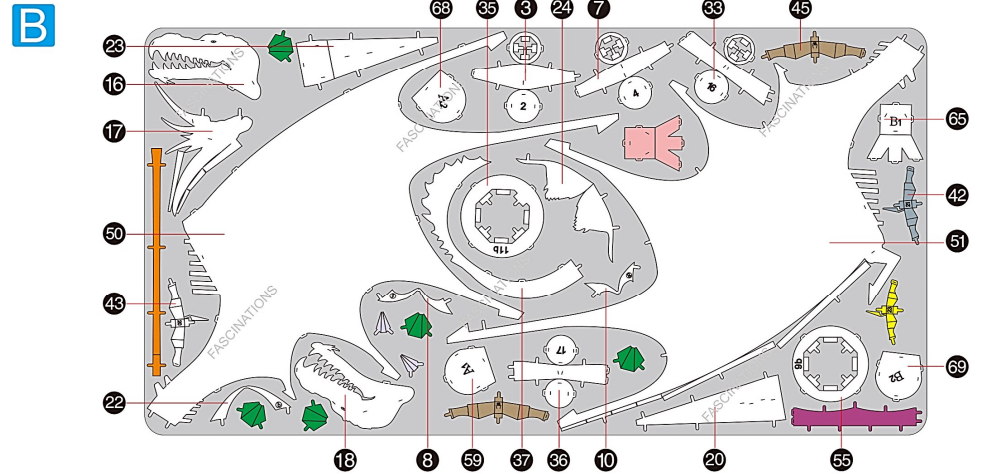
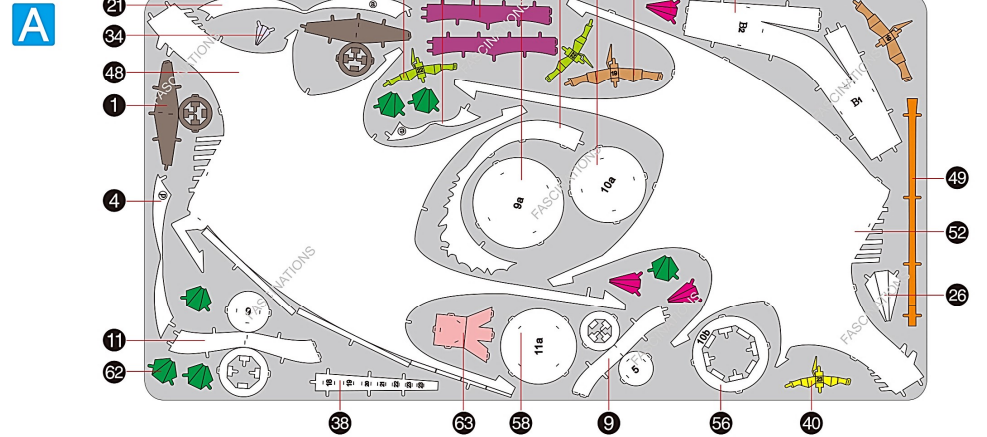
Step 2



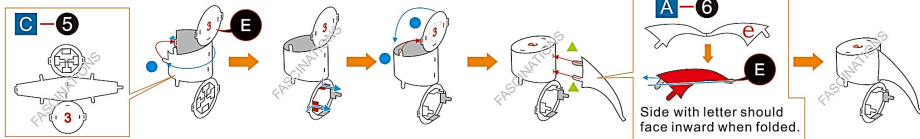
In order to avoid possible injury from sharp edges, please carefully discard the metal sheets after parts have been removed.

METAL SHEETS

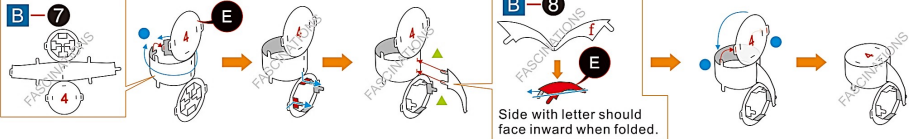
Parts that are in the same color are duplicates



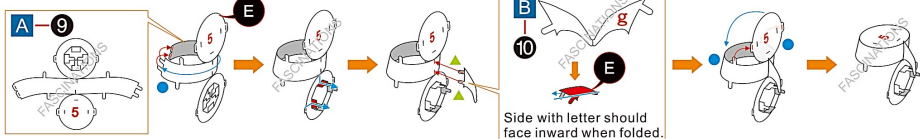
Step 3



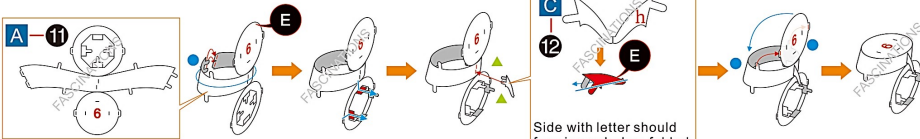
Step 4



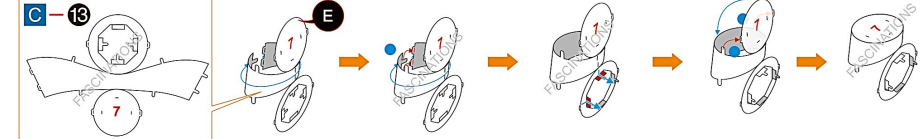
Step 5



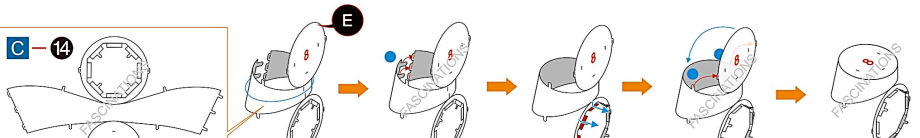
Step 6



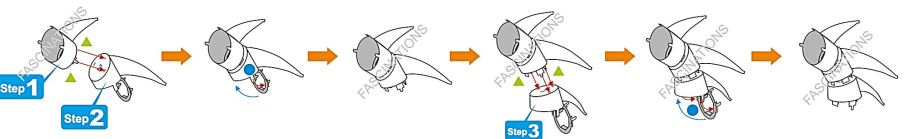
Step 7



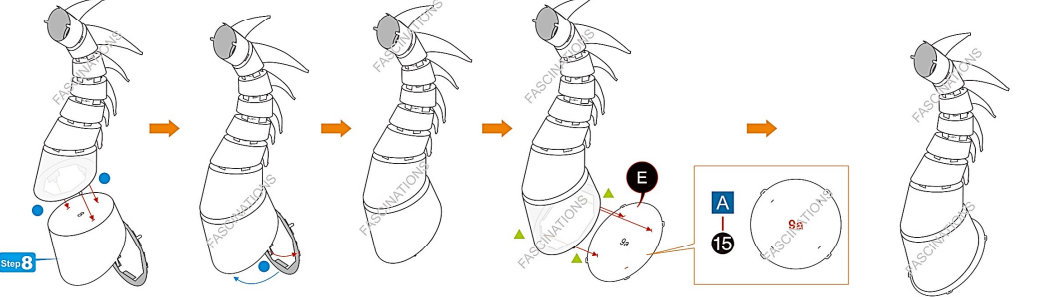
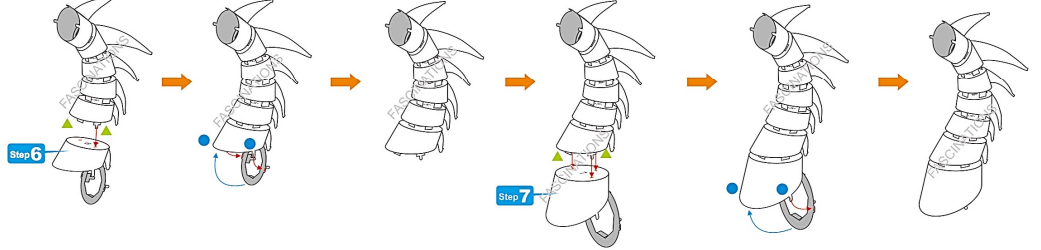
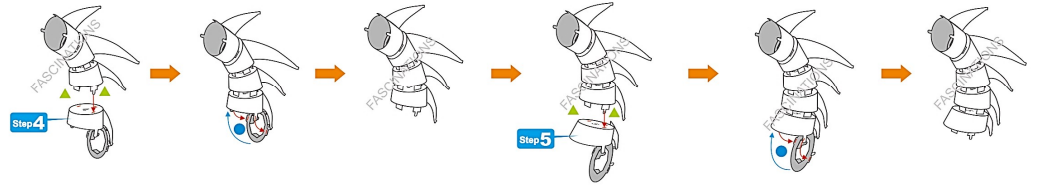
Step 8



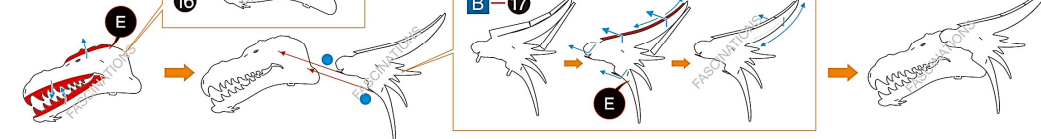
Step 9



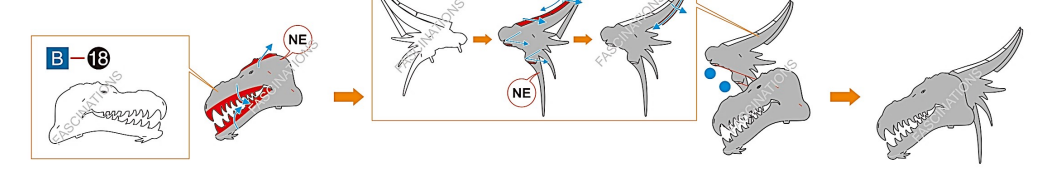
Step 10

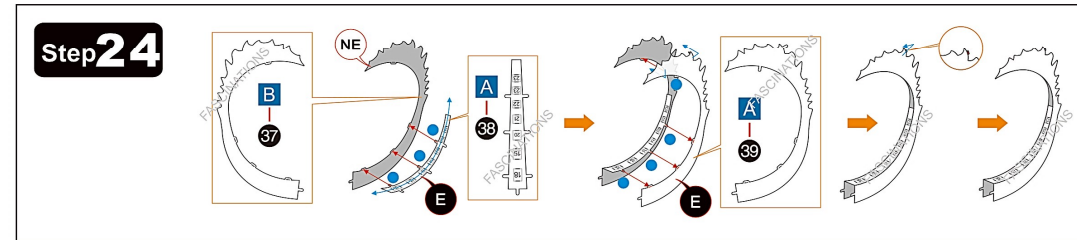
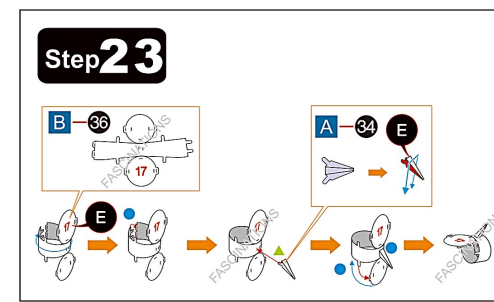
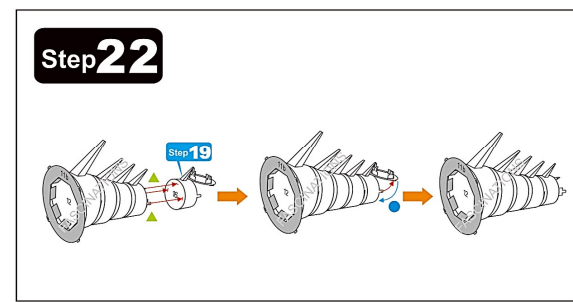
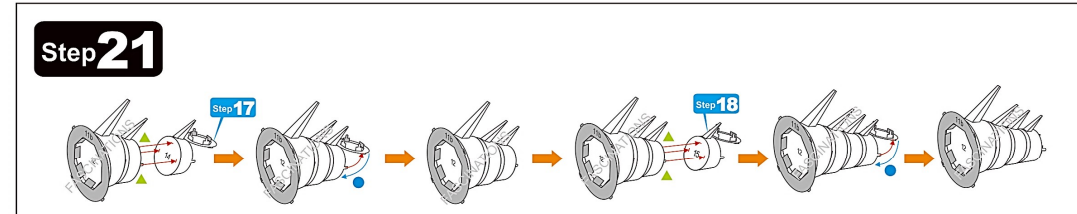
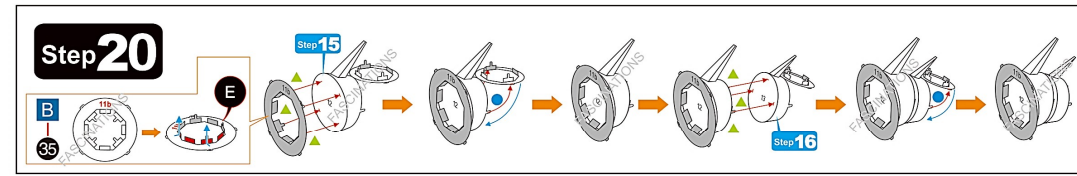
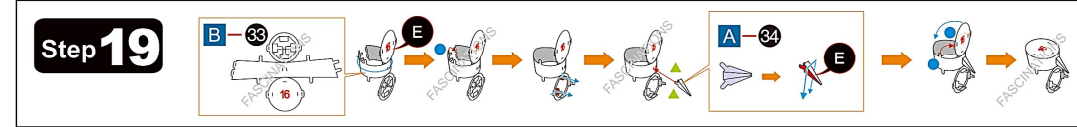
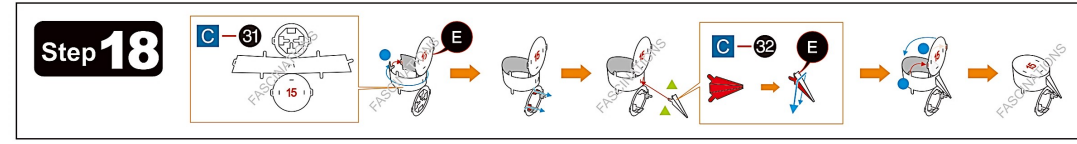
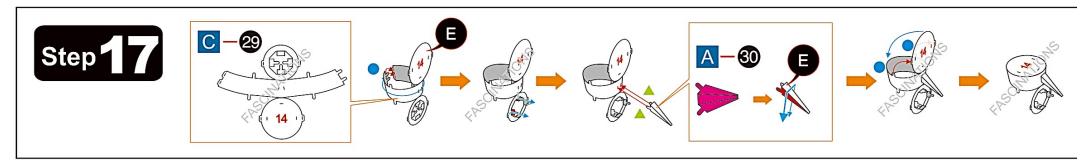
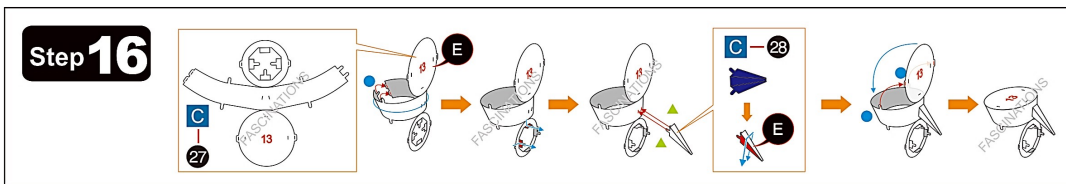
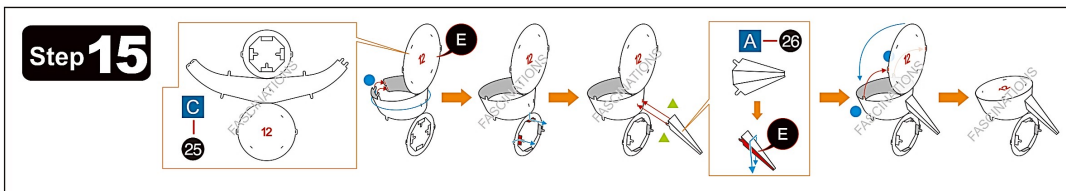
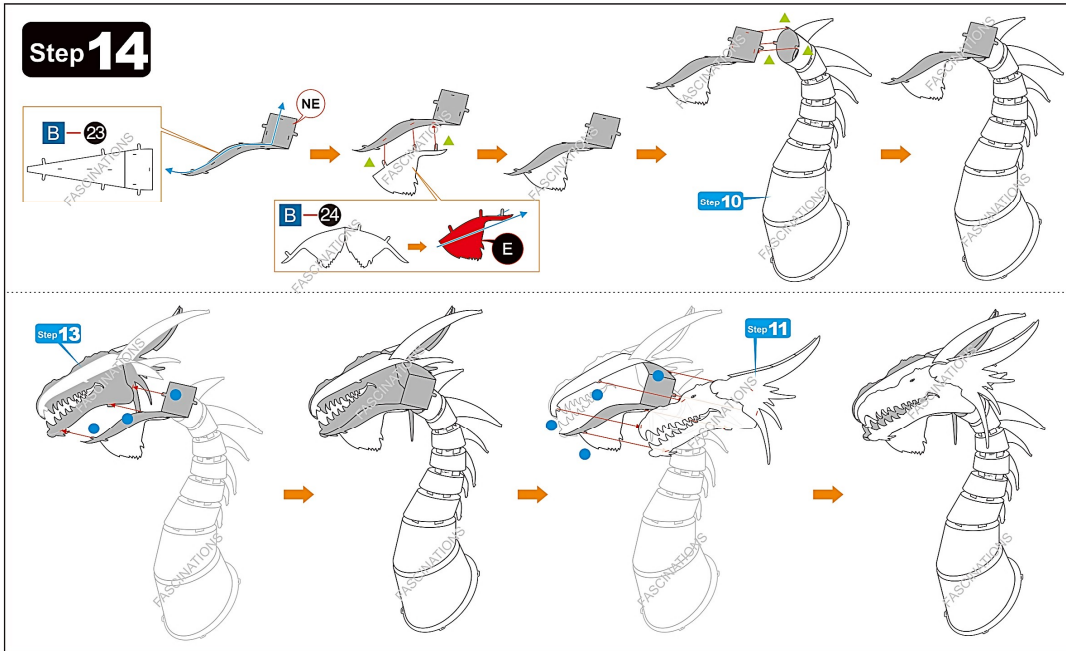
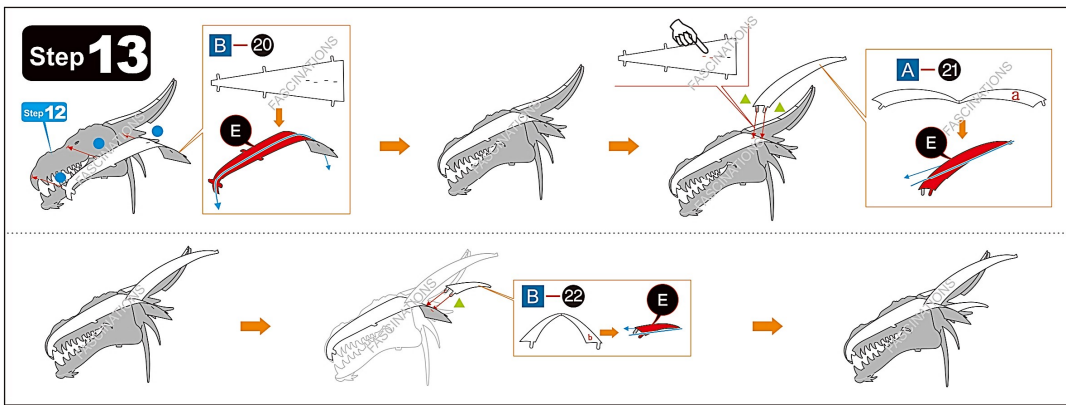


Step 11

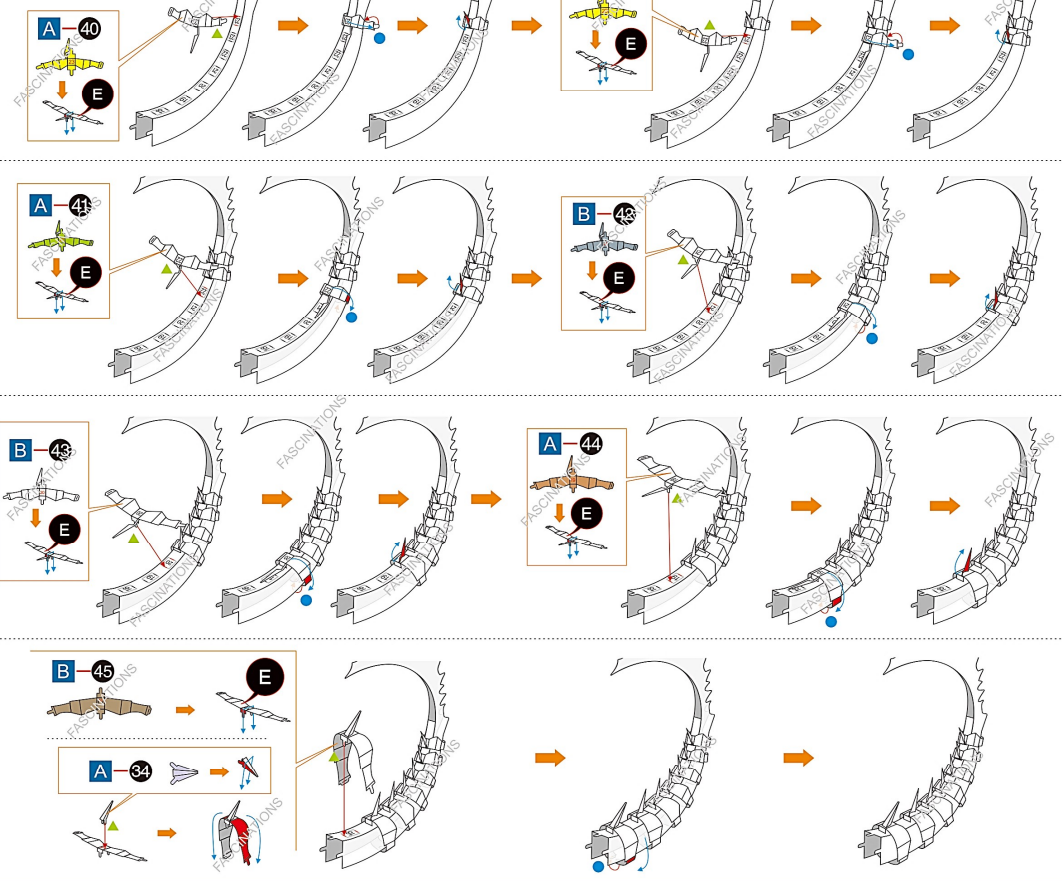


Step 12

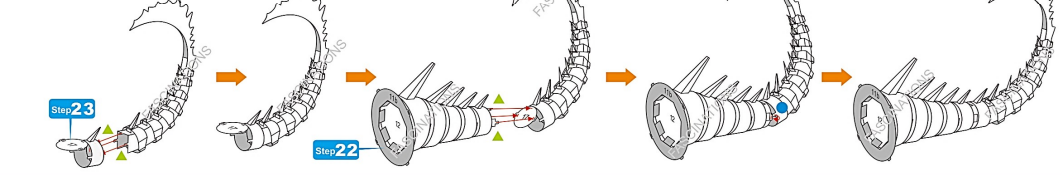




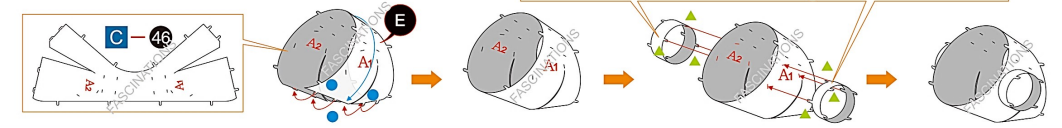
Step 25



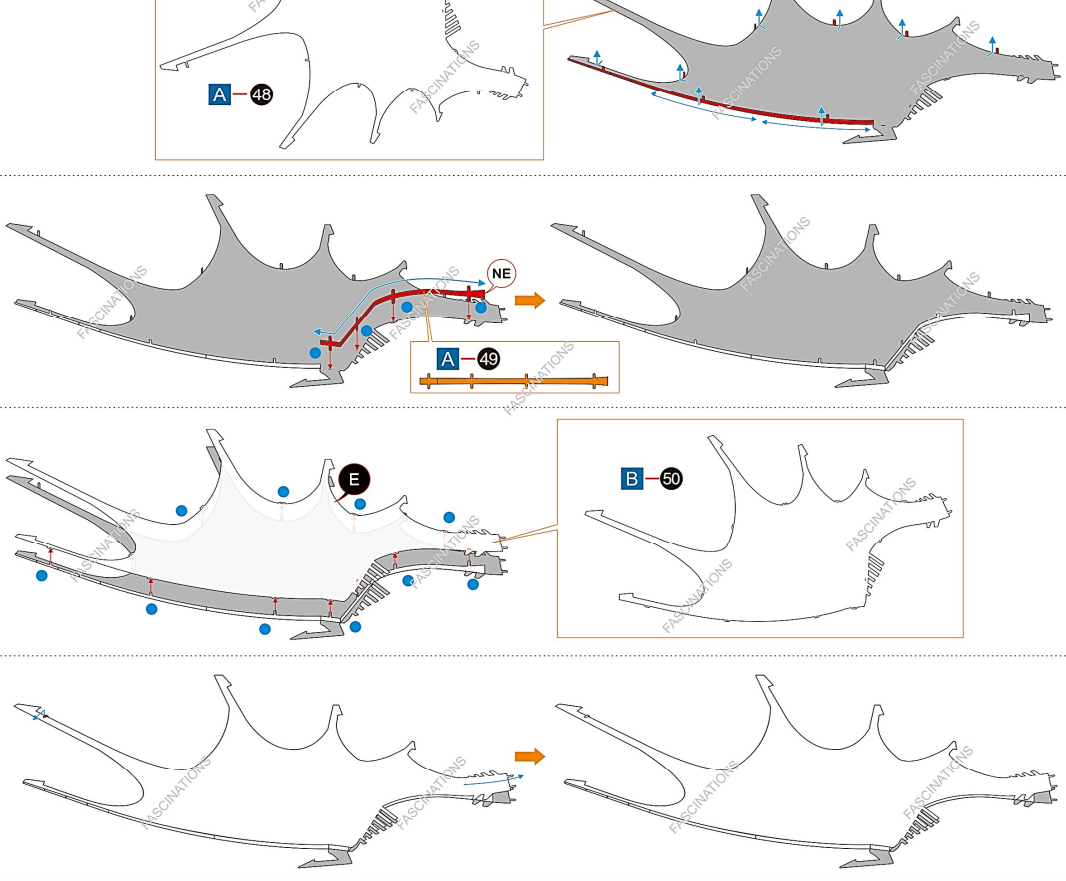
Step 26



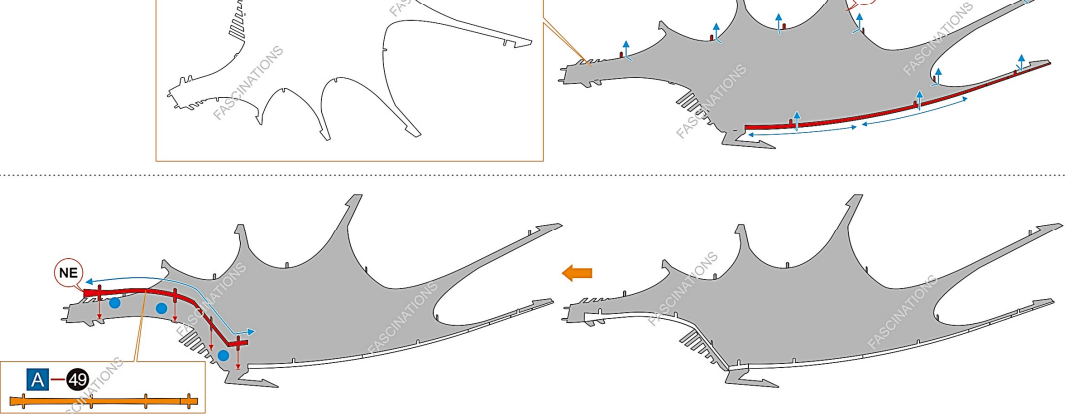
Step 27



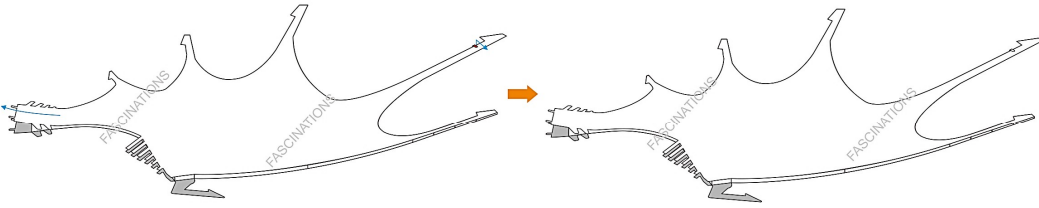
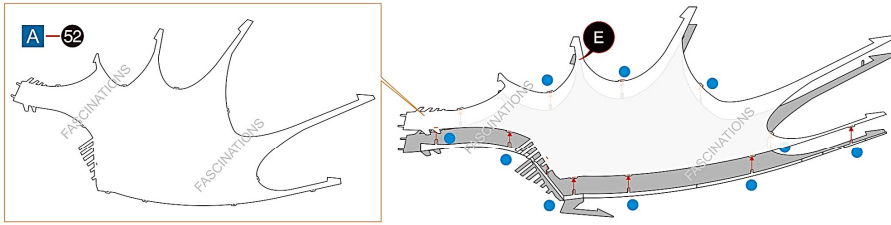
Step 28



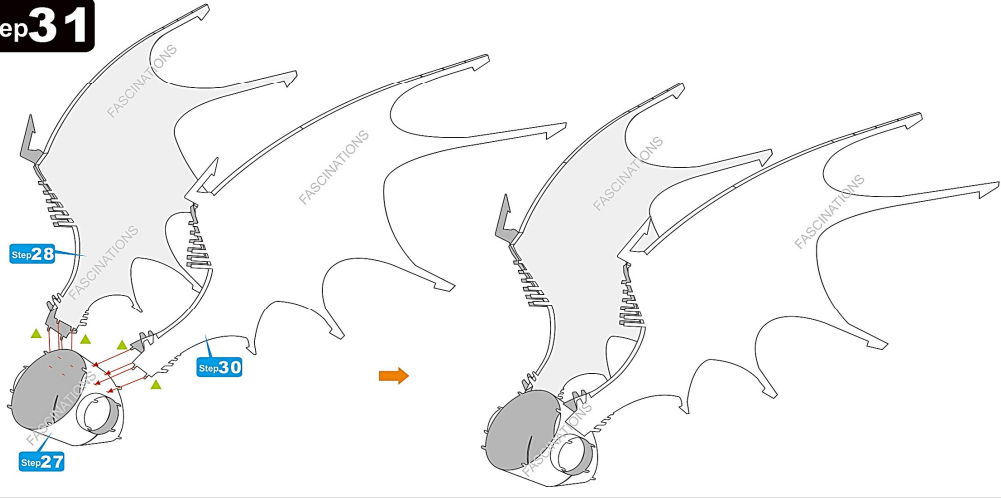
Step 29



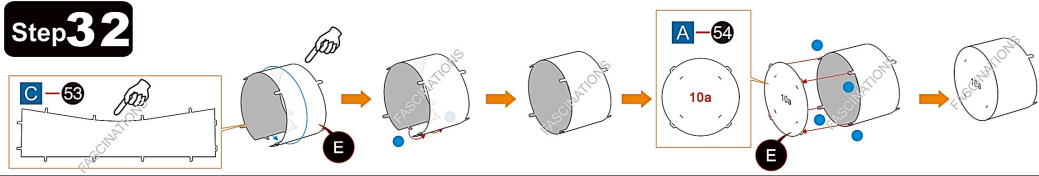
Step 30



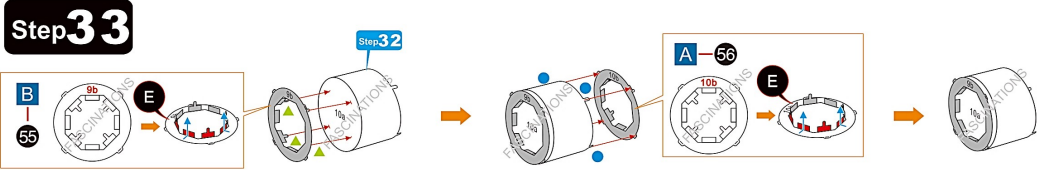
Step 31



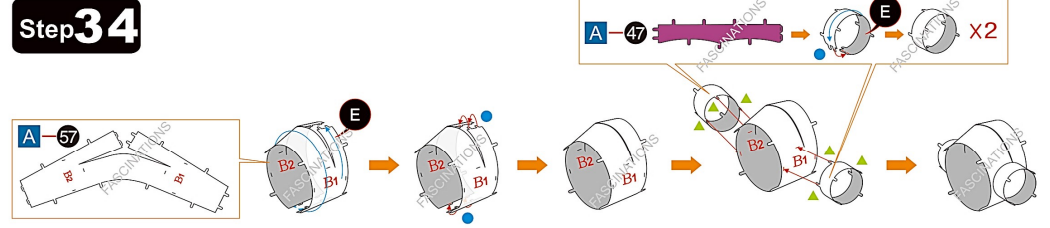
Step 32



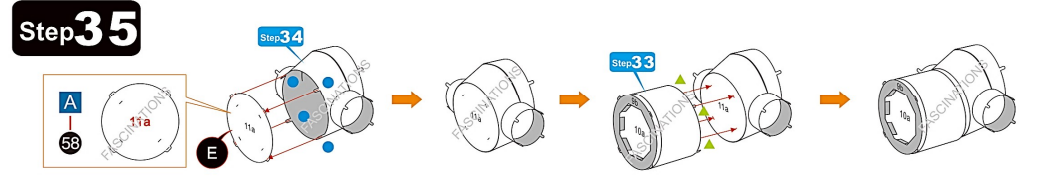
Step 33



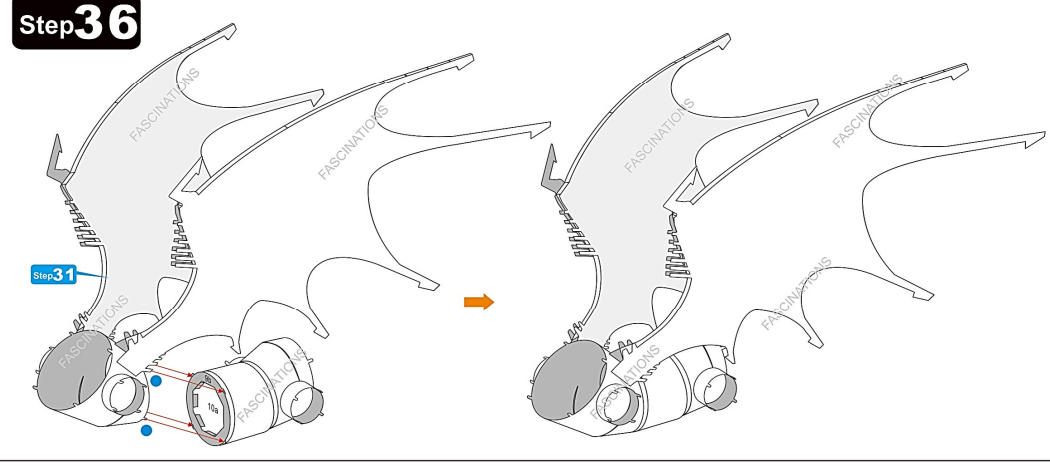
Step 34



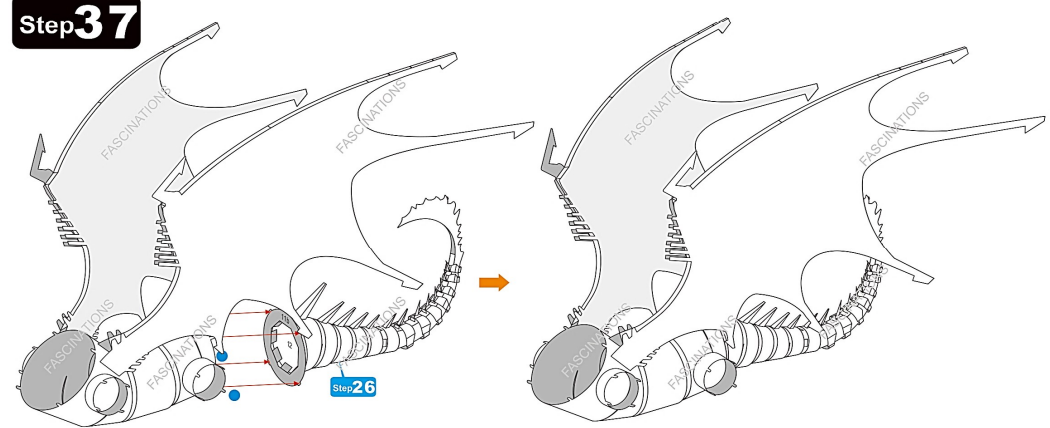
Step 35



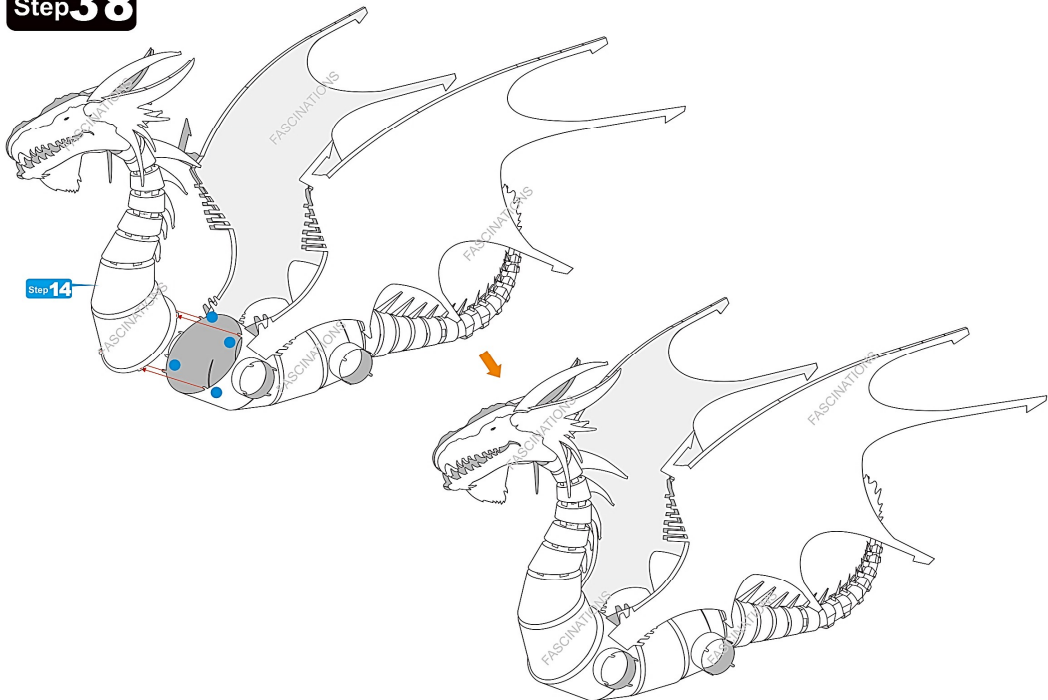
Step 36



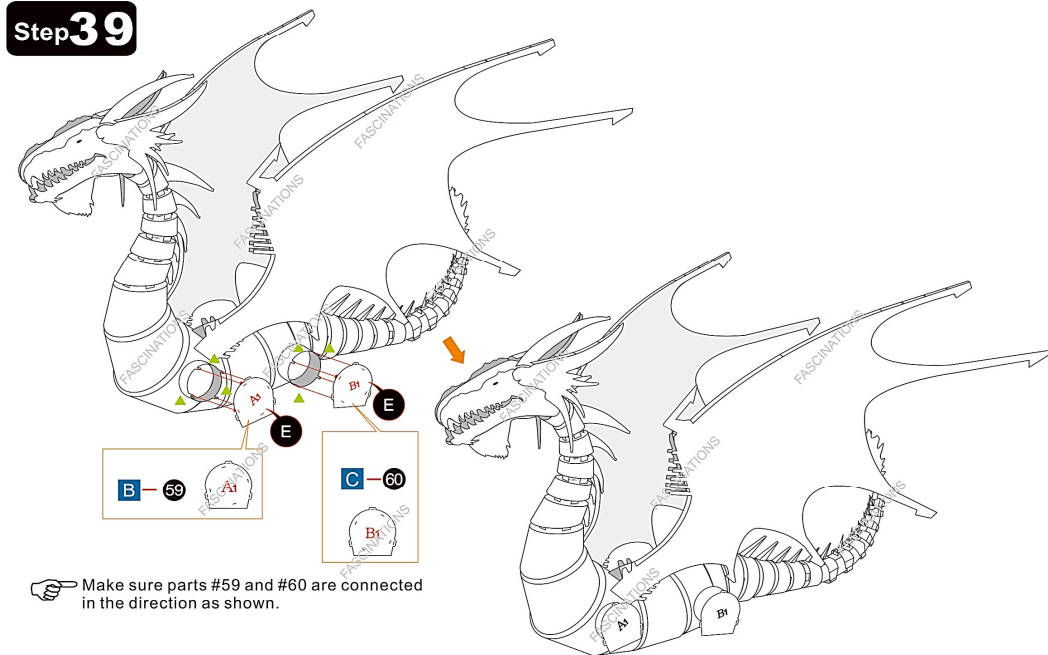
Step 37



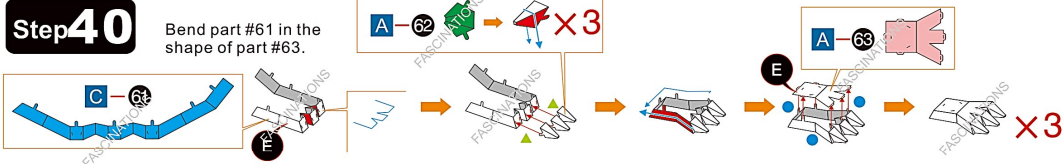
Step 38



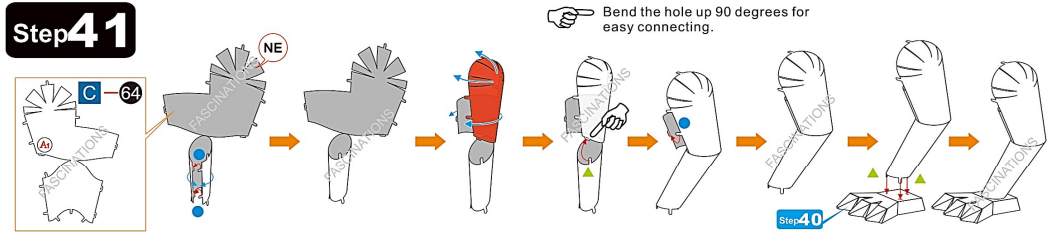
Step 39



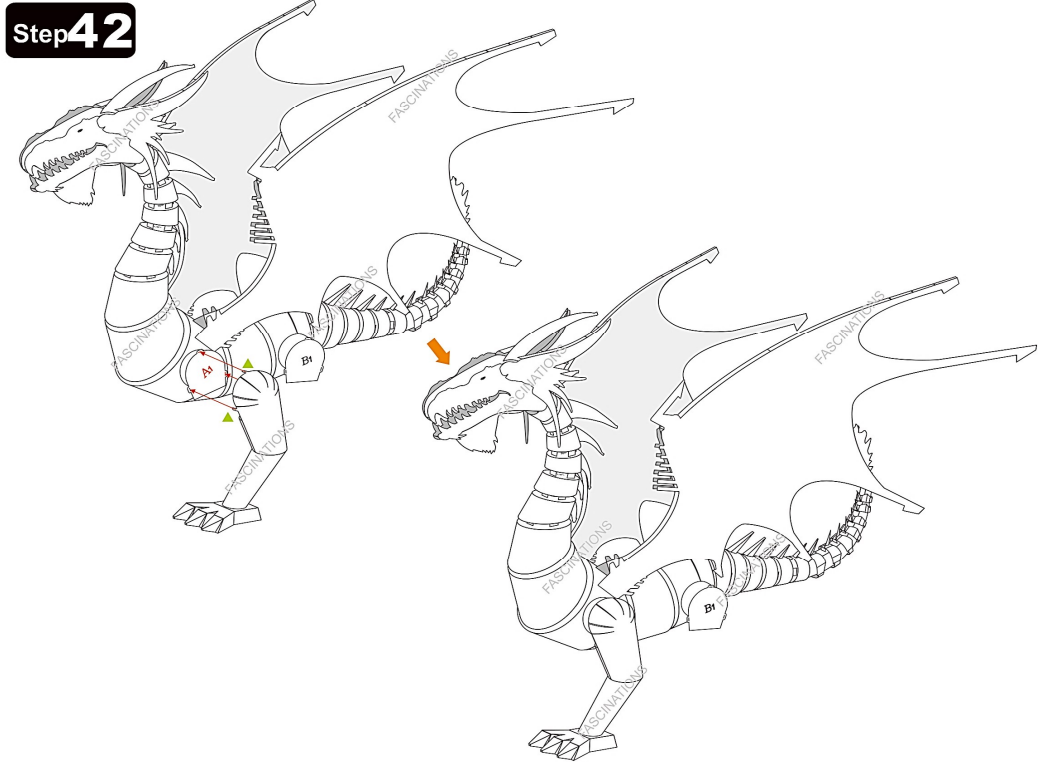
Step 40



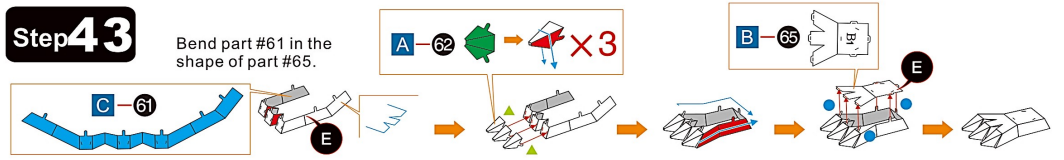
Step 41



Step 42

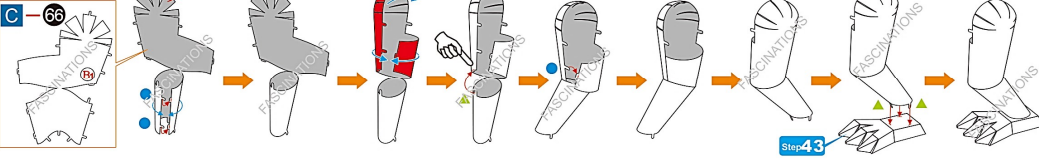


Step 43

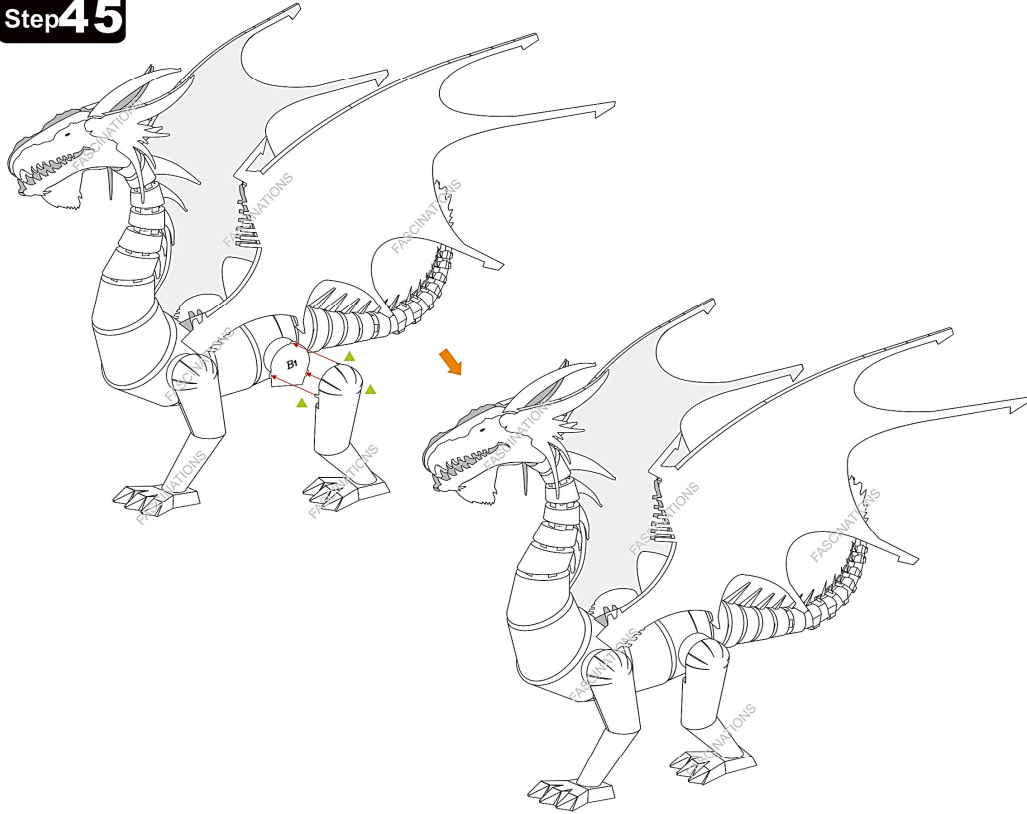


Step 44

Bend the hole up 90 degrees for easy connecting.

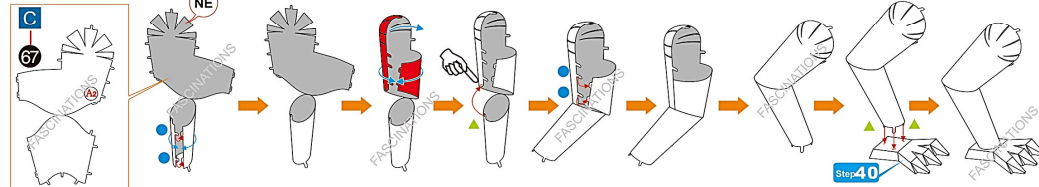


Step 45



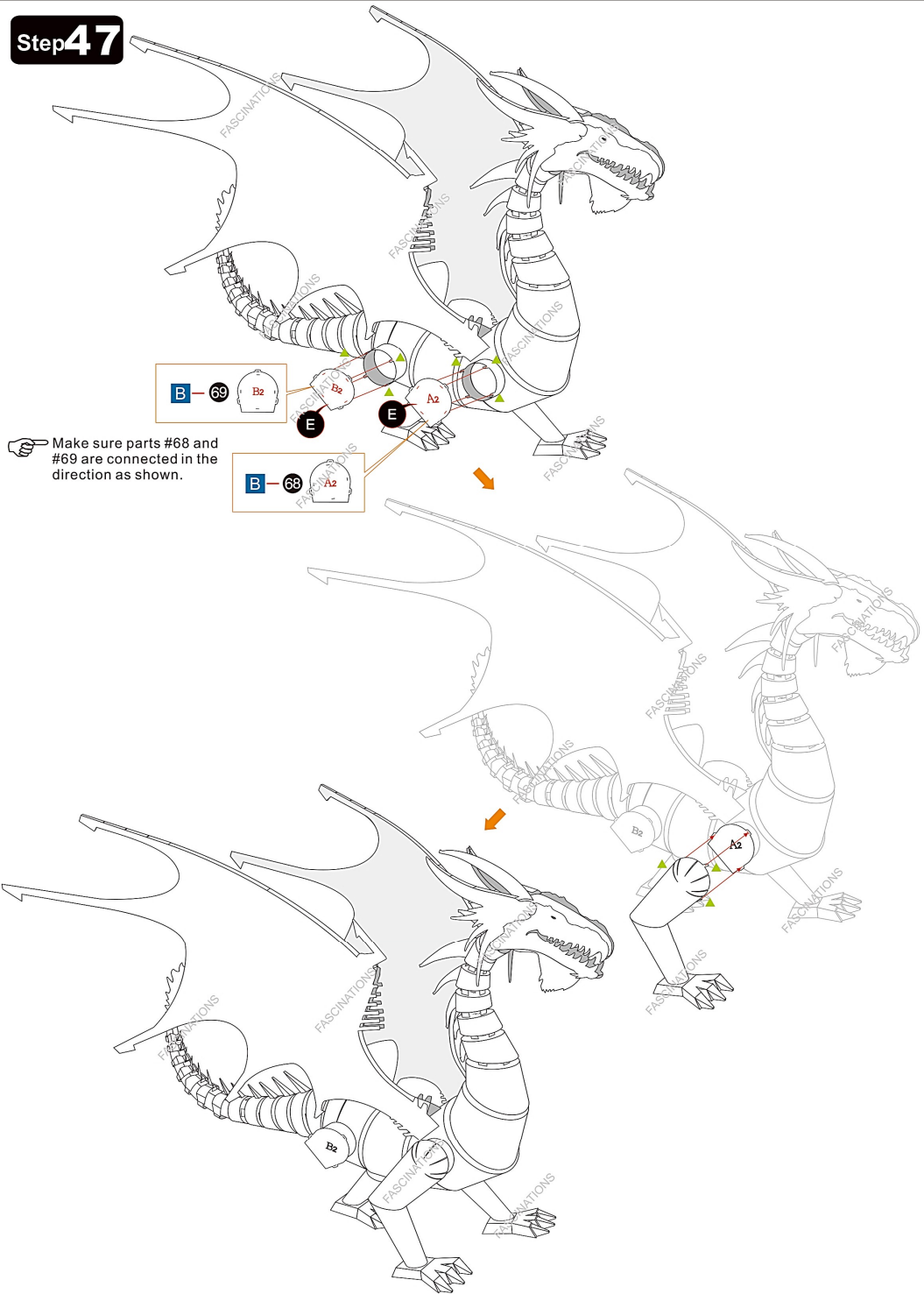
Step 46

Bend the hole up 90 degrees for easy connecting.



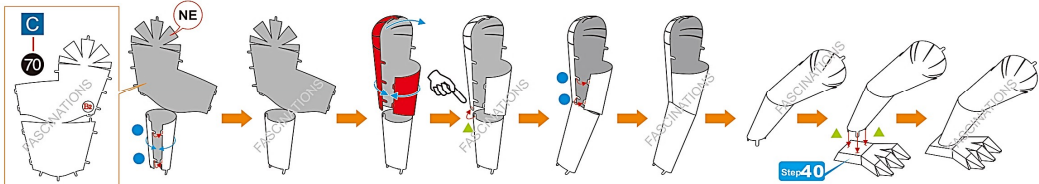
Step 47

Make sure parts #68 and #69 are connected in the direction as shown.

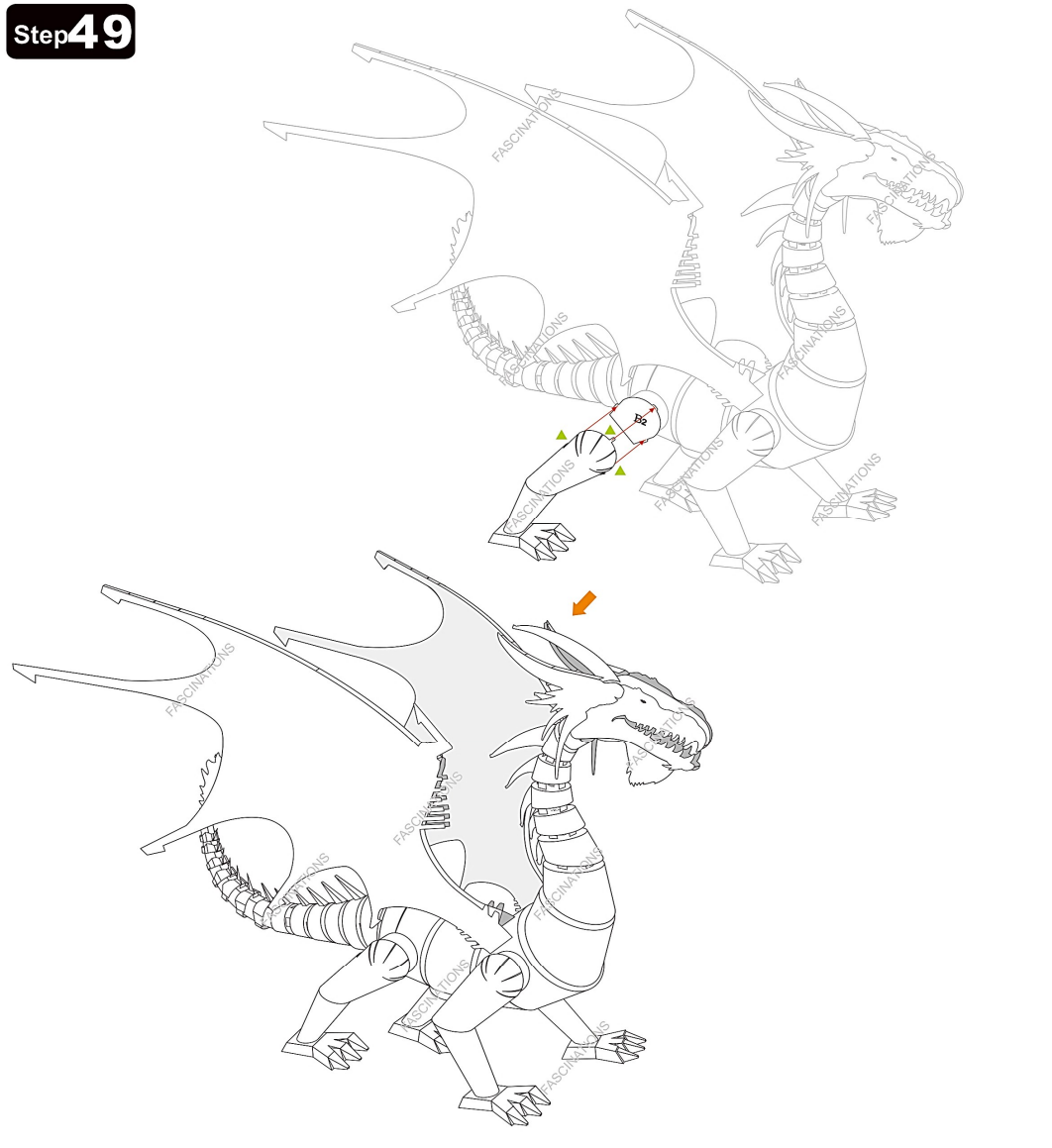


Step 48

Bend the hole up 90 degrees for easy connecting.



Step 49



Step 50

